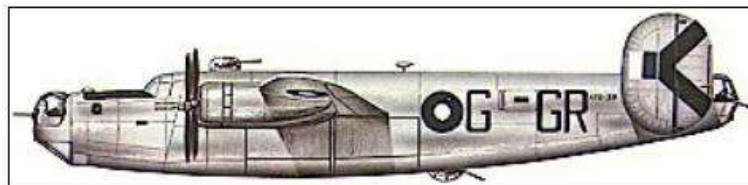


B24 Liberator A72-80 Underwater Dive Inspection Truscott WA Discovered 17-18 Aug 2009



B-24 Liberator



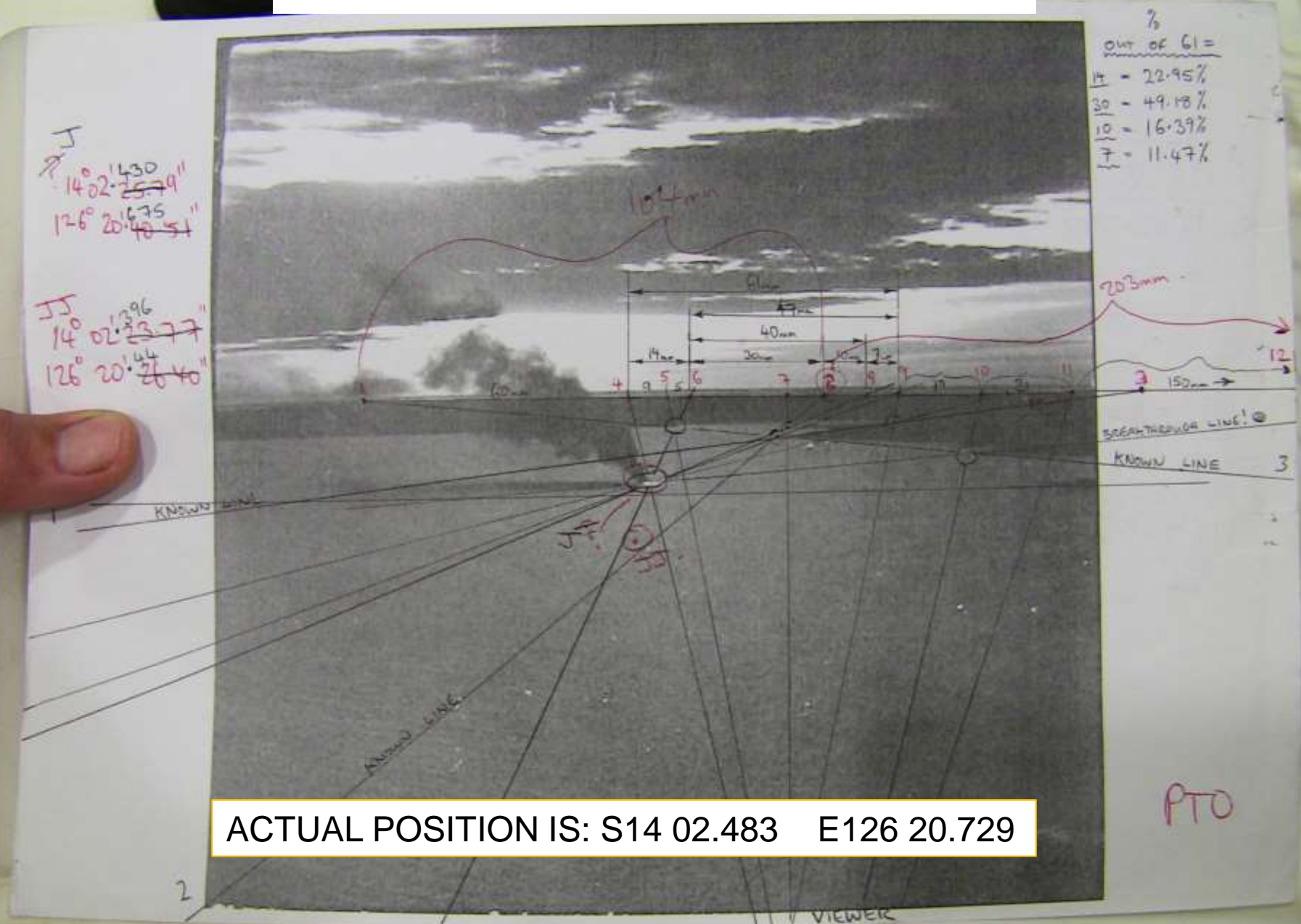
James Miles (Darwin) PH: 0429 926933 Email: jimmiles@adam.com.au

Original Photo (Courtesy of Dr Silvano Jung) of the crash of A72-80



PL EEN 7-4-A. CRASHED BYG 14°03'S 126°20'E (23 MAR 45) 2130Z 20" 1000' 24 PL

HOW THE WRECK WAS FOUND



ACTUAL POSITION IS: S14 02.483 E126 20.729

Physical mathematical references taken from a photocopy of the original (enlarged)

▼ Search

Fly To Find Businesses Directions

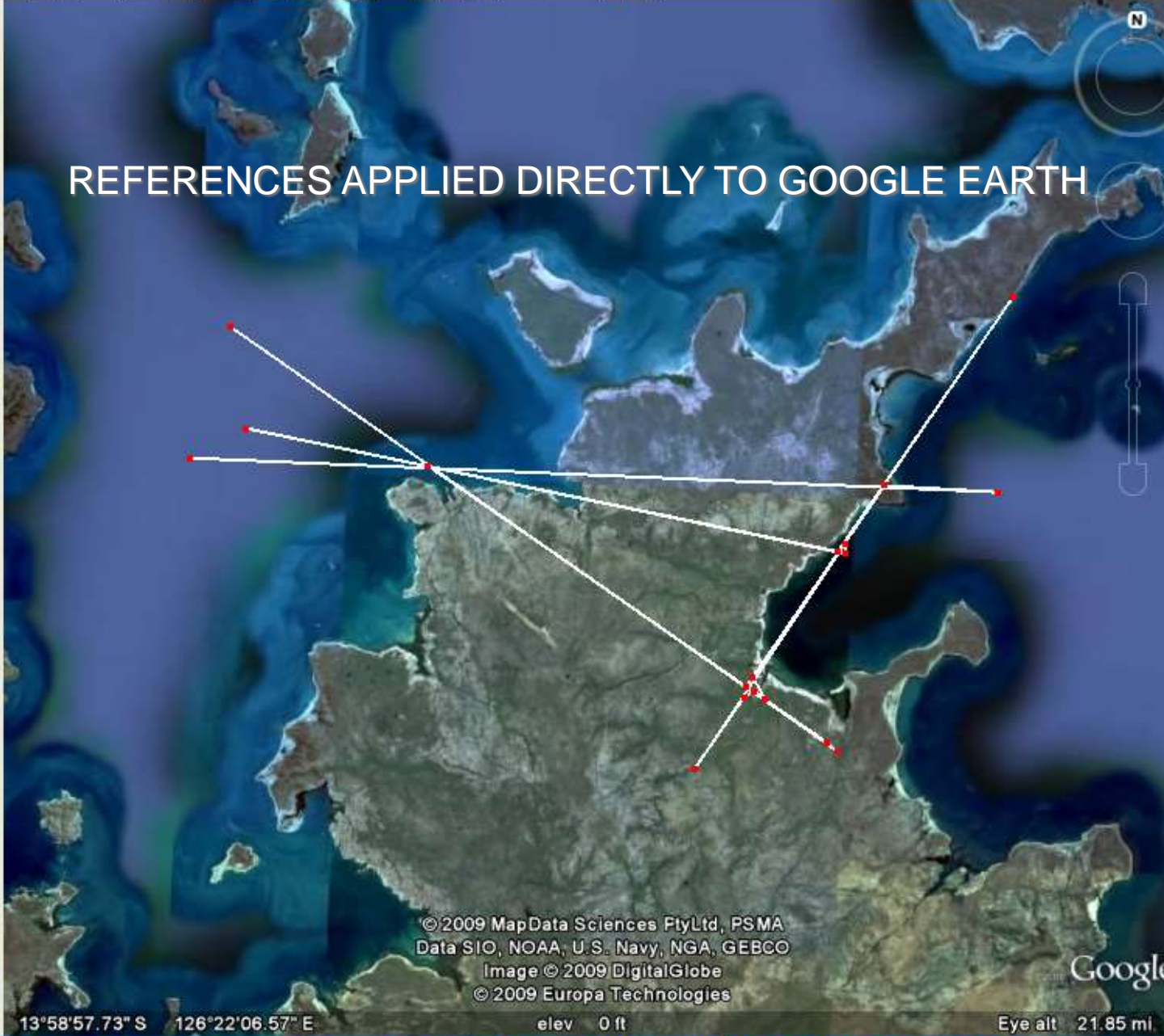
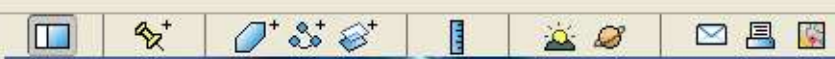
Fly to e.g., Hotels near JFK

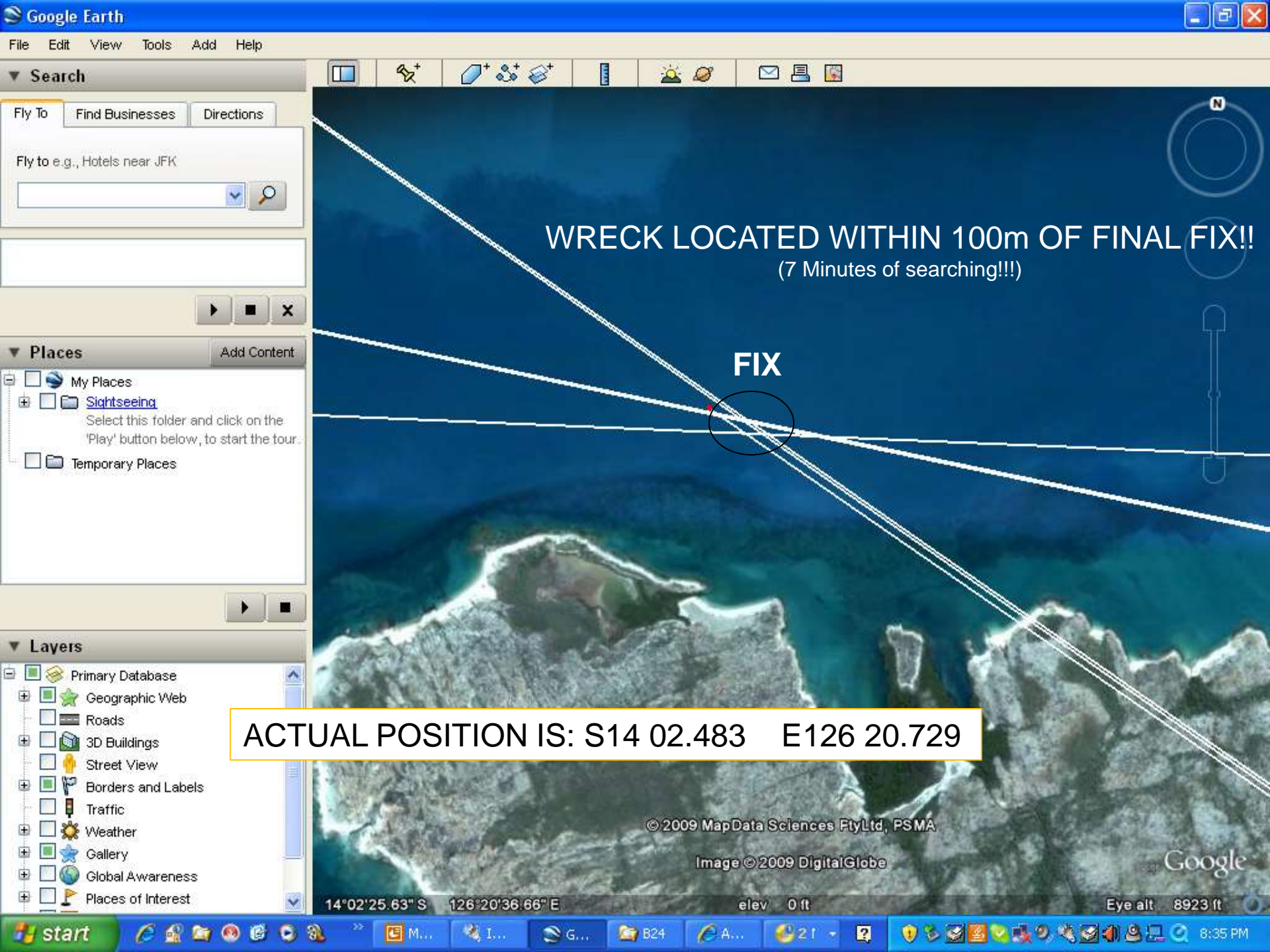
▼ Places Add Content

- My Places
- [Sightseeing](#)
Select this folder and click on the 'Play' button below, to start the tour.
- Temporary Places

▼ Layers

- Primary Database
- Geographic Web
- Roads
- 3D Buildings
- Street View
- Borders and Labels
- Traffic
- Weather
- Gallery
- Global Awareness
- Places of Interest





WRECK LOCATED WITHIN 100m OF FINAL FIX!!
(7 Minutes of searching!!!)

FIX

ACTUAL POSITION IS: S14 02.483 E126 20.729

© 2009 MapData Sciences Pty Ltd, PSMA

Image © 2009 DigitalGlobe

Google

14°02'25.63" S 126°20'36.66" E

elev 0 ft

Eye alt 8923 ft

8:35 PM

THE CREW

AWM Photo#: NWA0730 (March 1945)

Left to right: Back row:

250759 Squadron Leader N. I. Straus of East Malvern, Vic (PILOT);

427775 Flight Sergeant H. J. Boyd of Pomborneiti North, Vic (2nd PILOT);

426733 Flying Officer (FO) R. A. Whiting of Ascot, Qld (NAV B);

404485 Flight Lieutenant C. D. Parry-O'Keden of Chinchilla, Qld (BOMBADIER);

416215 FO J. W. Hursthouse of Elbow Hill, SA (W.O. AIR 1st);

401748 Warrant Officer (WO) W. R. Flanagan of Warrandyte, Vic (W.O. AIR 2nd).

Front row:

408591 WO H. G. Parker of Cootamundra, NSW (AIR GUNNER);

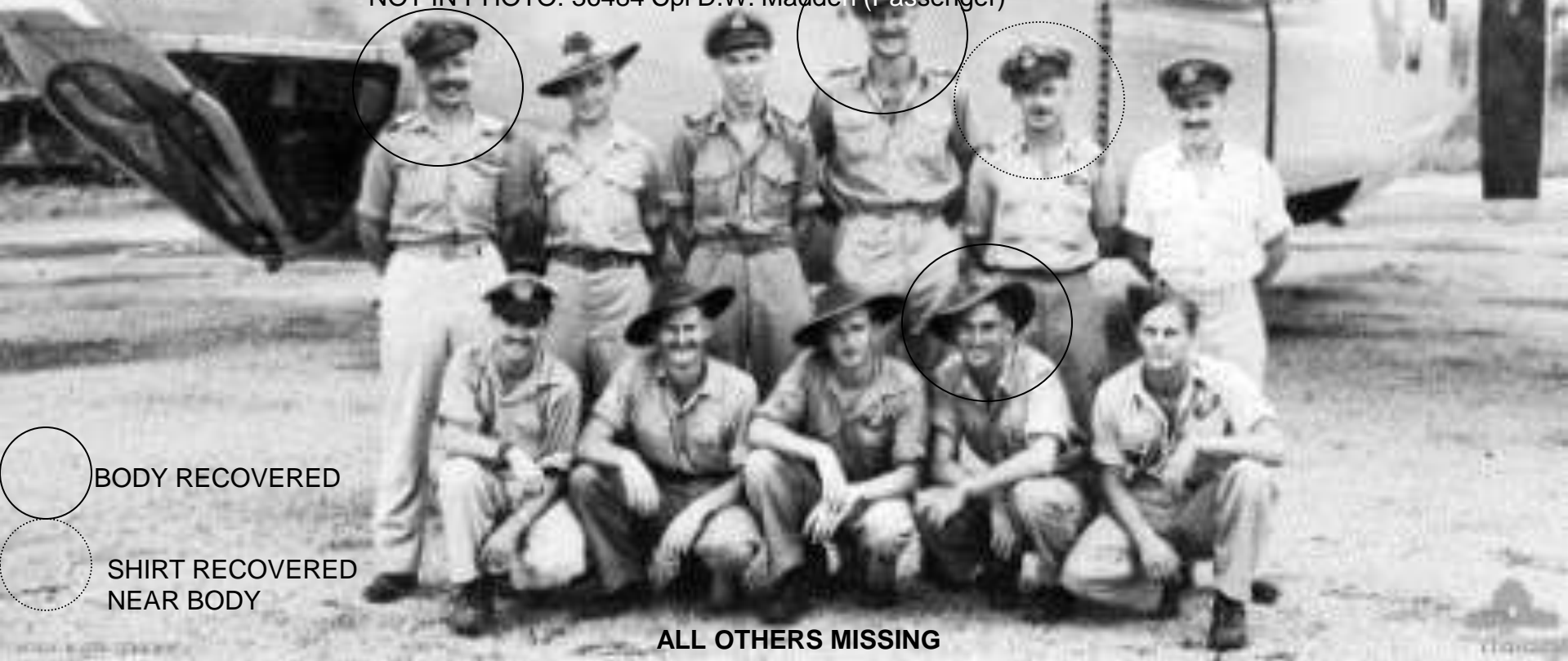
46563 Sergeant (Sgt) R. N. Morris of Wagin, WA (FLIGHT ENGINEER);

121592 Sgt A. D. Whitehead of Jervois, SA (AIR GUNNER);

436889 Sgt W. A. Rogers of Albany, WA (AIR GUNNER), and

422716 Sgt J. R. Ryan of Bondi, NSW (AIR GUNNER).

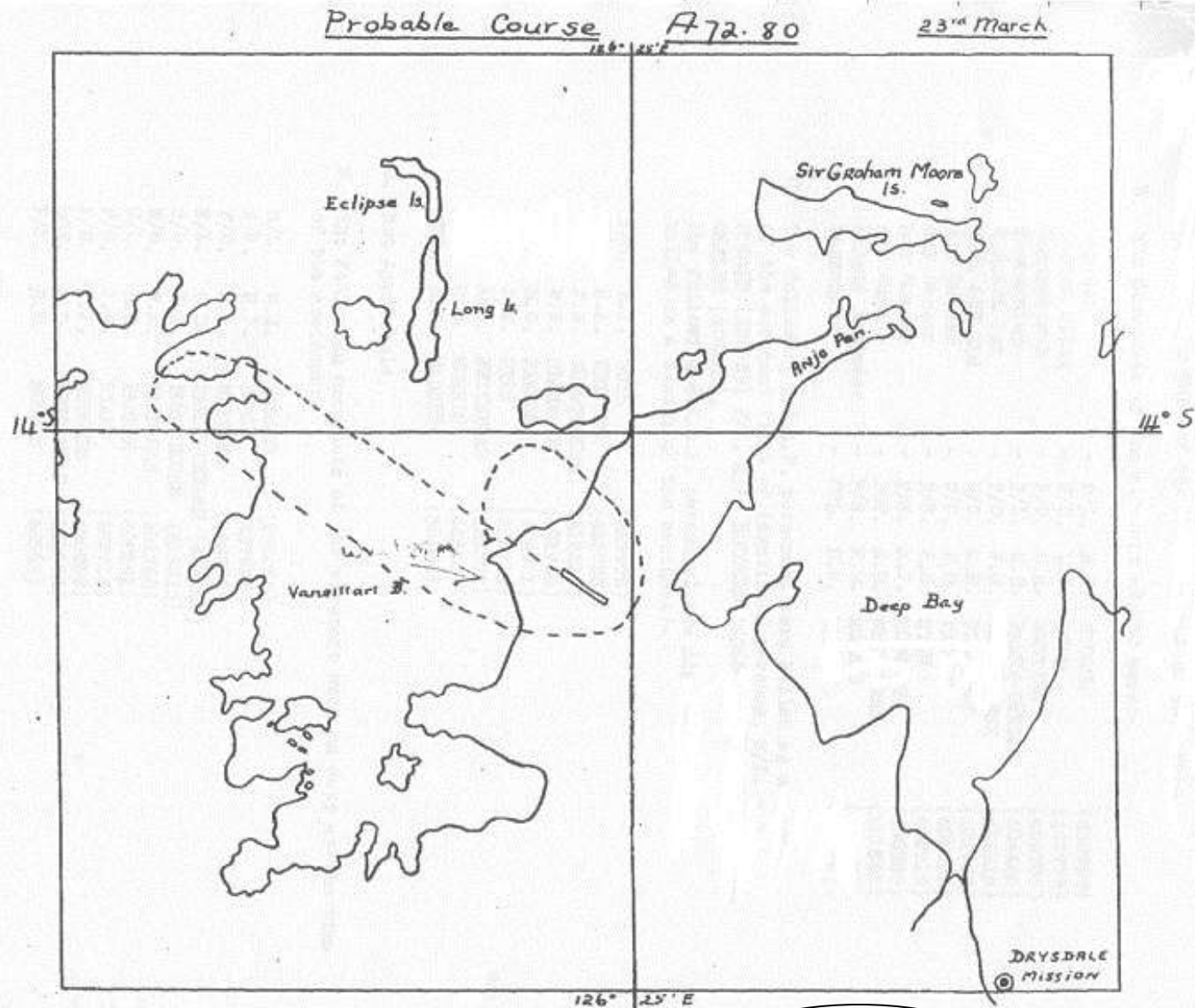
NOT IN PHOTO: 36484 Cpl D.W. Madden (Passenger)



BODY RECOVERED

SHIRT RECOVERED
NEAR BODY

ALL OTHERS MISSING



ORIGINAL SKETCH OF FLIGHT DATED:

21 Sqdn.
Fenton. 4th April.

M. M. M.
President.

WIND at surface 200° 15K (D.S.H.) 2002.

A72-80 FLIGHT PATH
23-3-45





Average depth elsewhere = 30'



B24 - Wreck Location

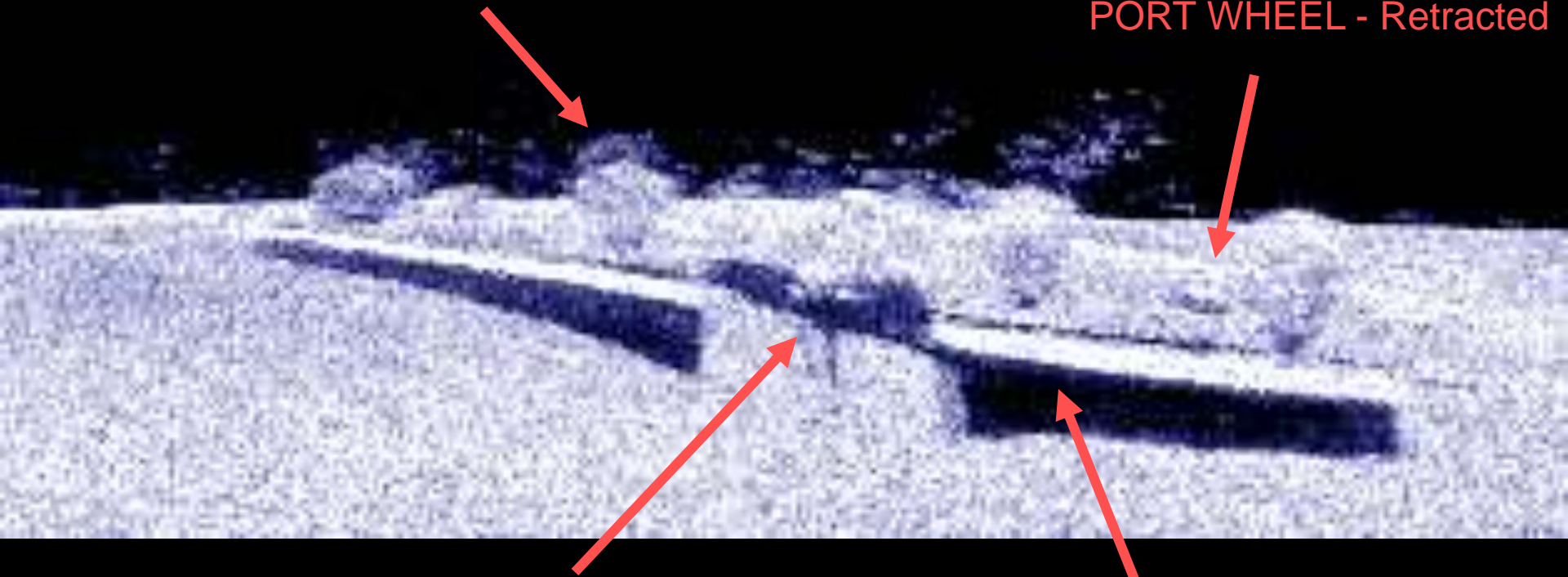
NOTES: In the book, "Truscott – Diary" By John Beasy has extracts from reports of military divers diving the wreck some days after the accident. In those reports the depth is reported as being "60ft". The wreck discovered is in fact in 60ft of water.

Truscott Field

SIDE SCAN IMAGERY – WING (Inverted)

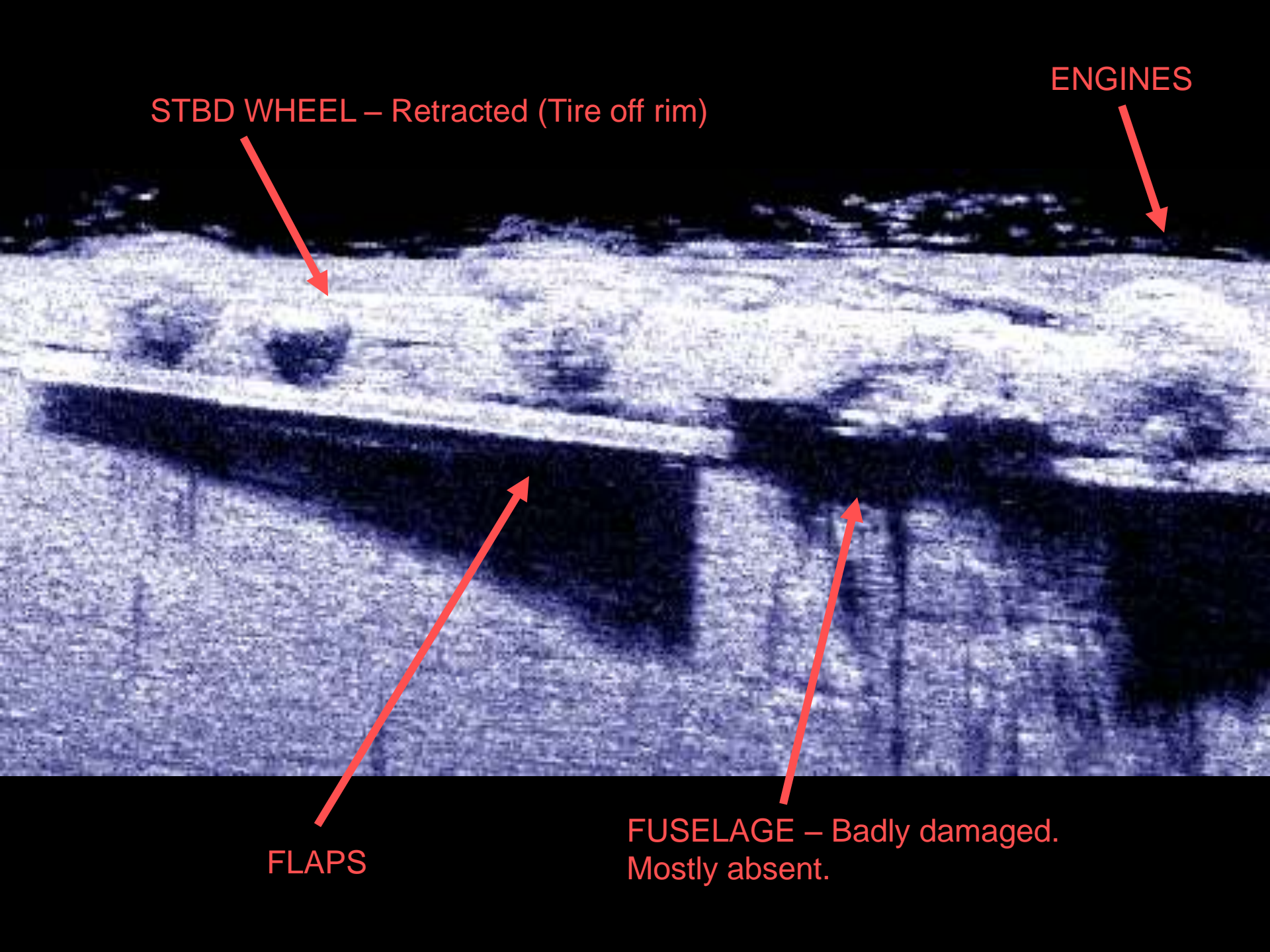
ENGINES – All propellers absent.
Probably destroyed on impact due
to high power settings applied in
an attempt to maintain height.

PORT WHEEL - Retracted



FUSELAGE – Badly damaged.
Mostly absent.

FLAPS - Lowered



STBD WHEEL – Retracted (Tire off rim)

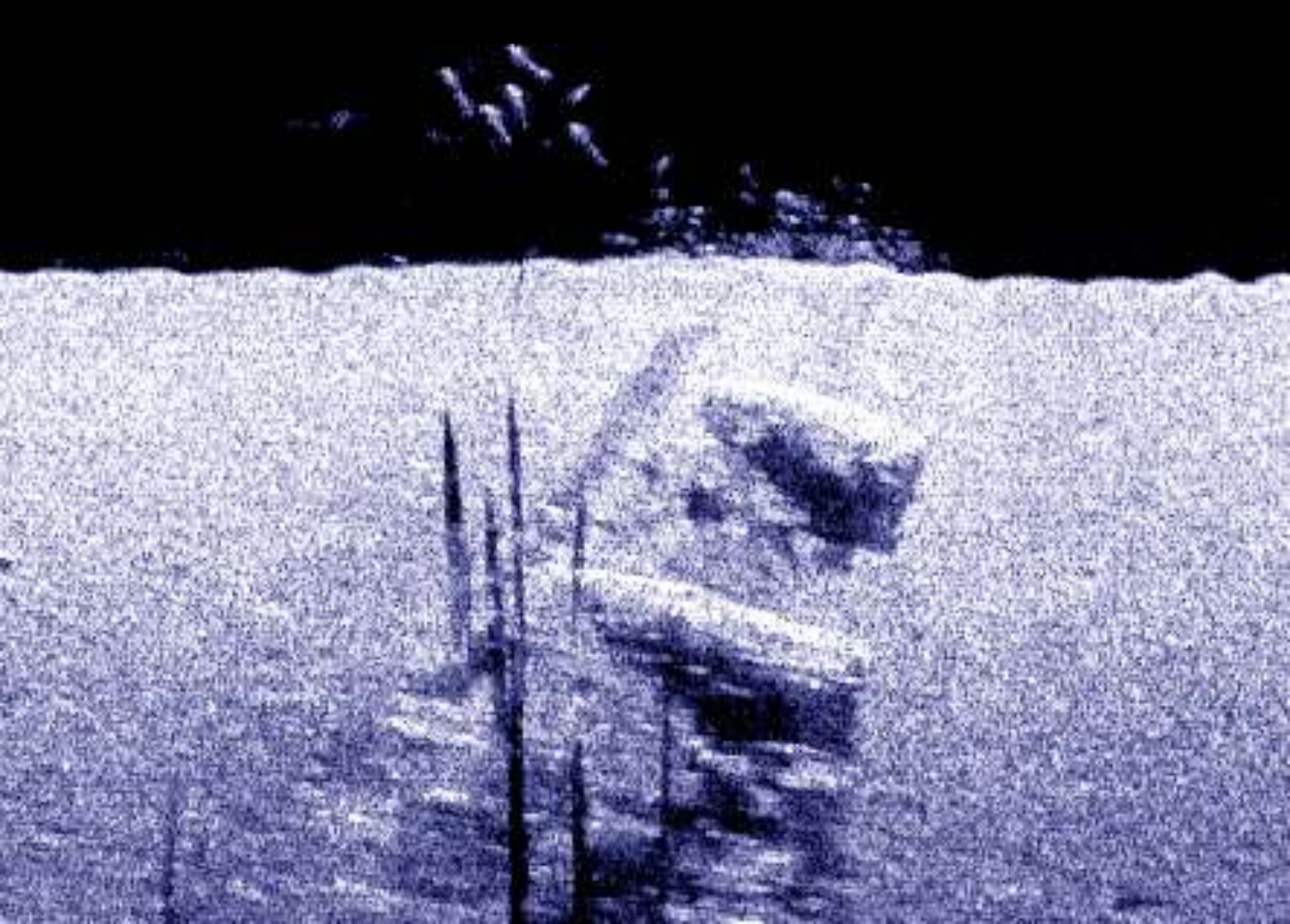
ENGINES

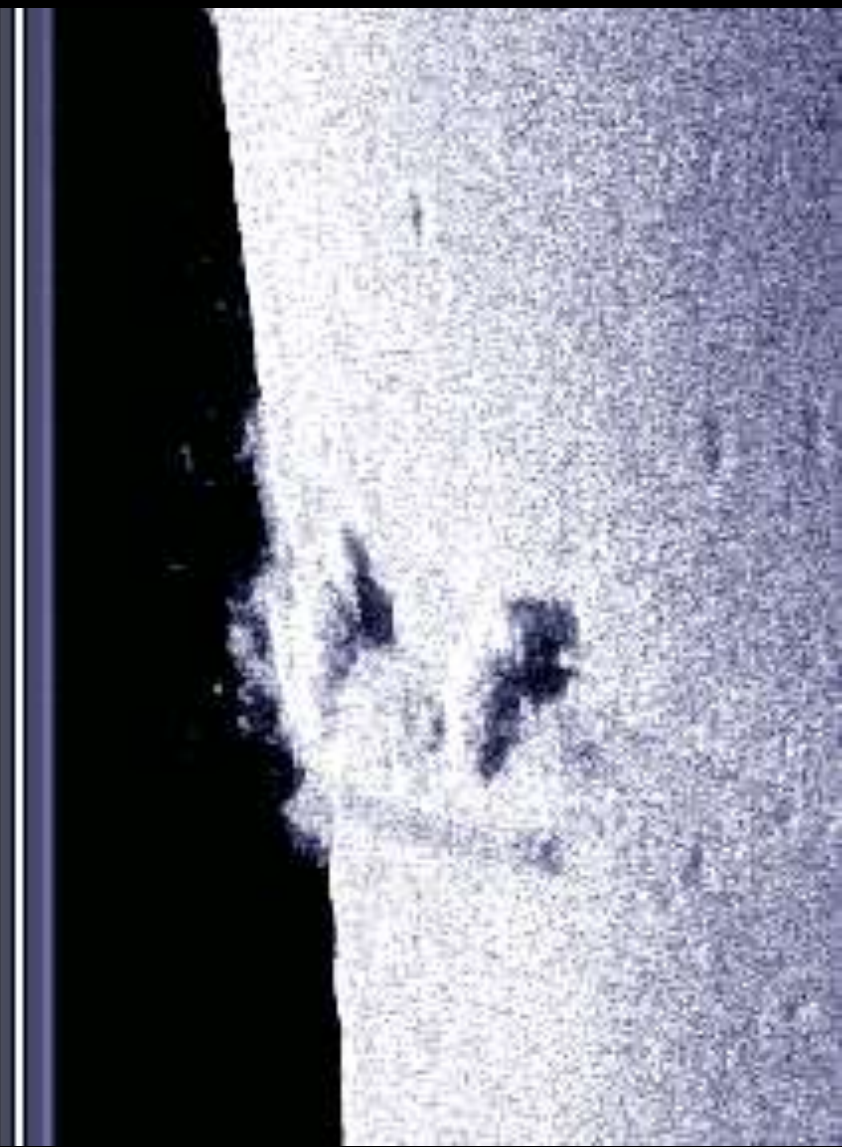
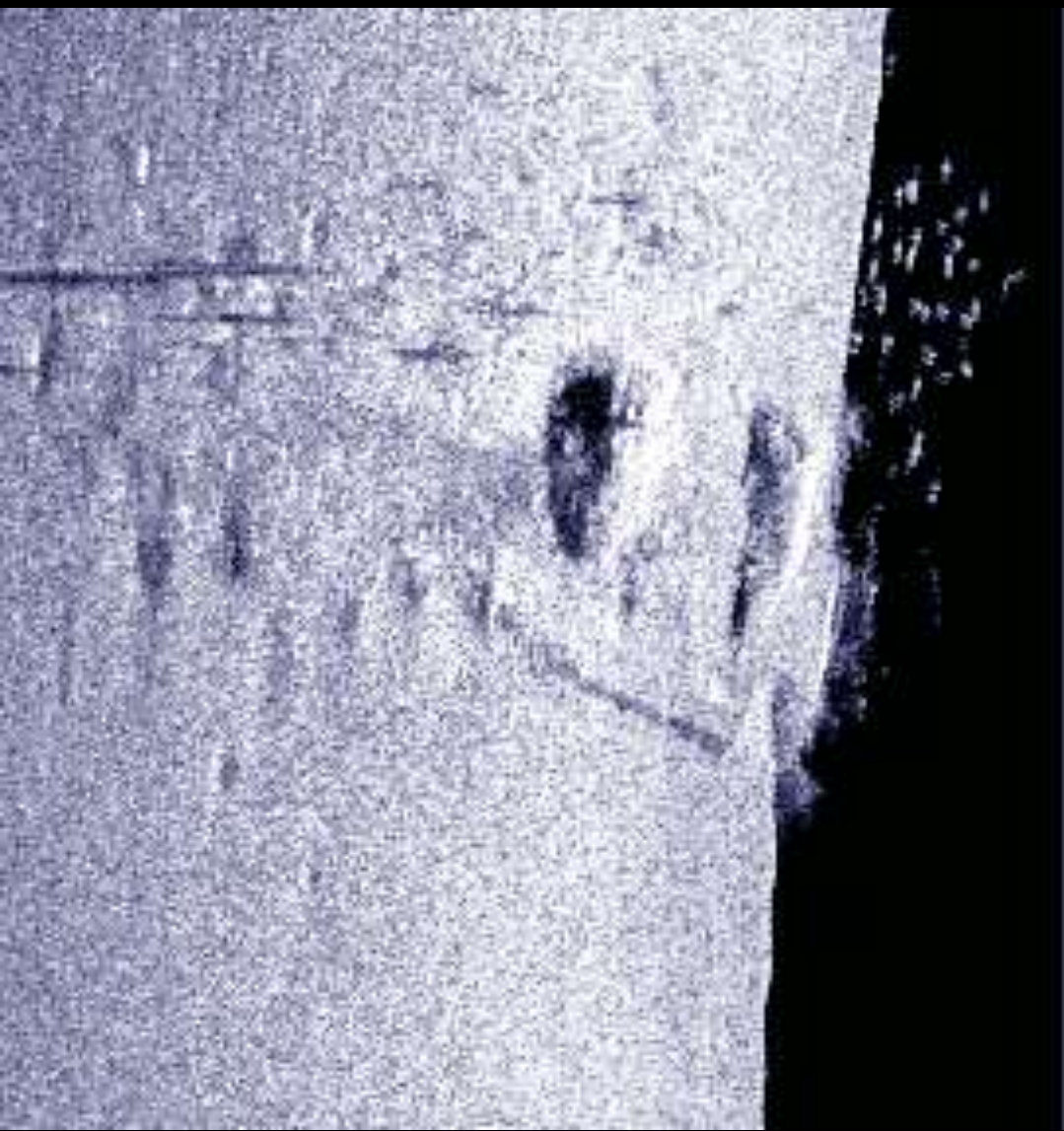
FLAPS

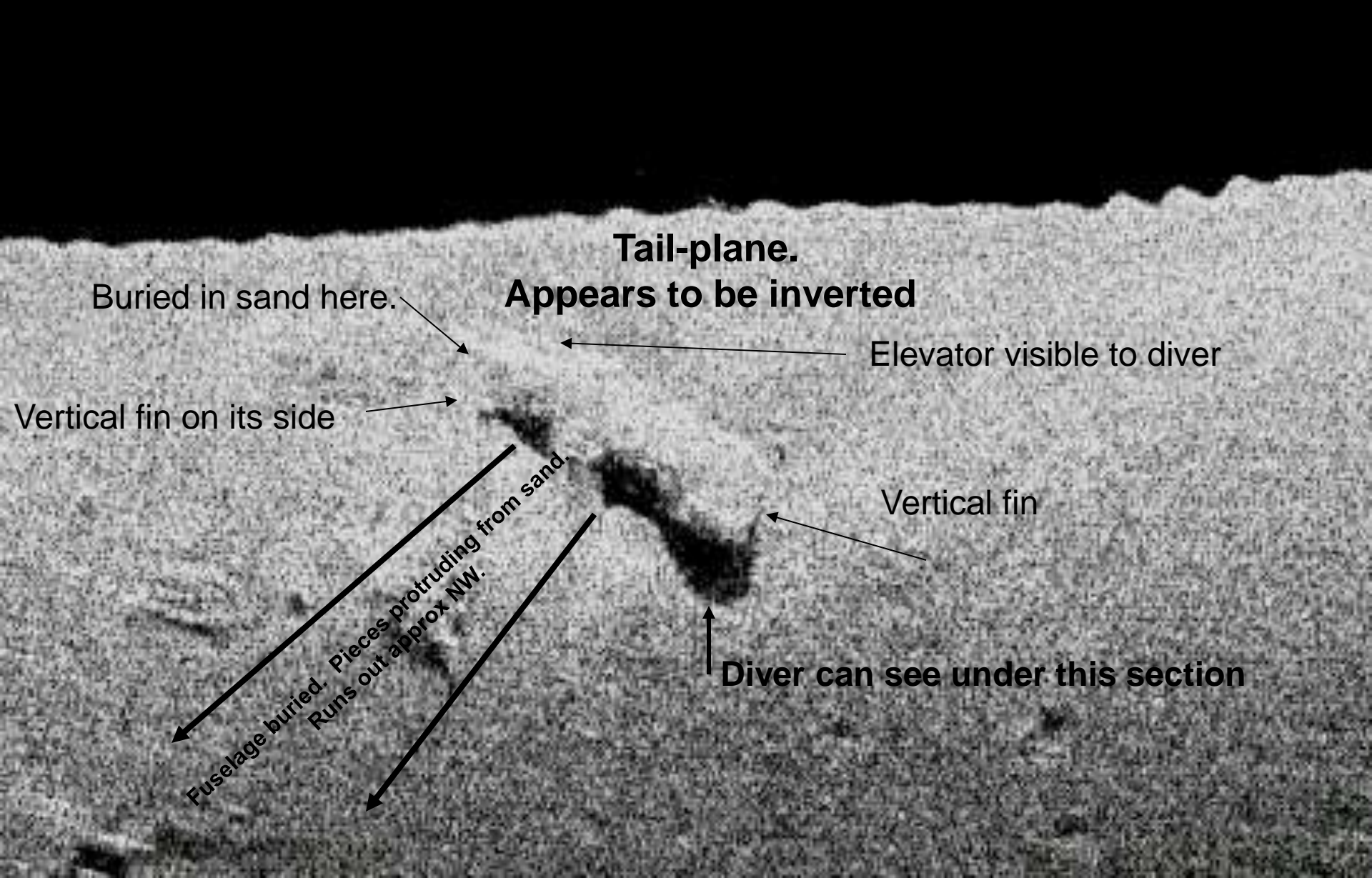
FUSELAGE – Badly damaged.
Mostly absent.

PORT WHEEL - Retracted









Buried in sand here.

Tail-plane.
Appears to be inverted

Elevator visible to diver

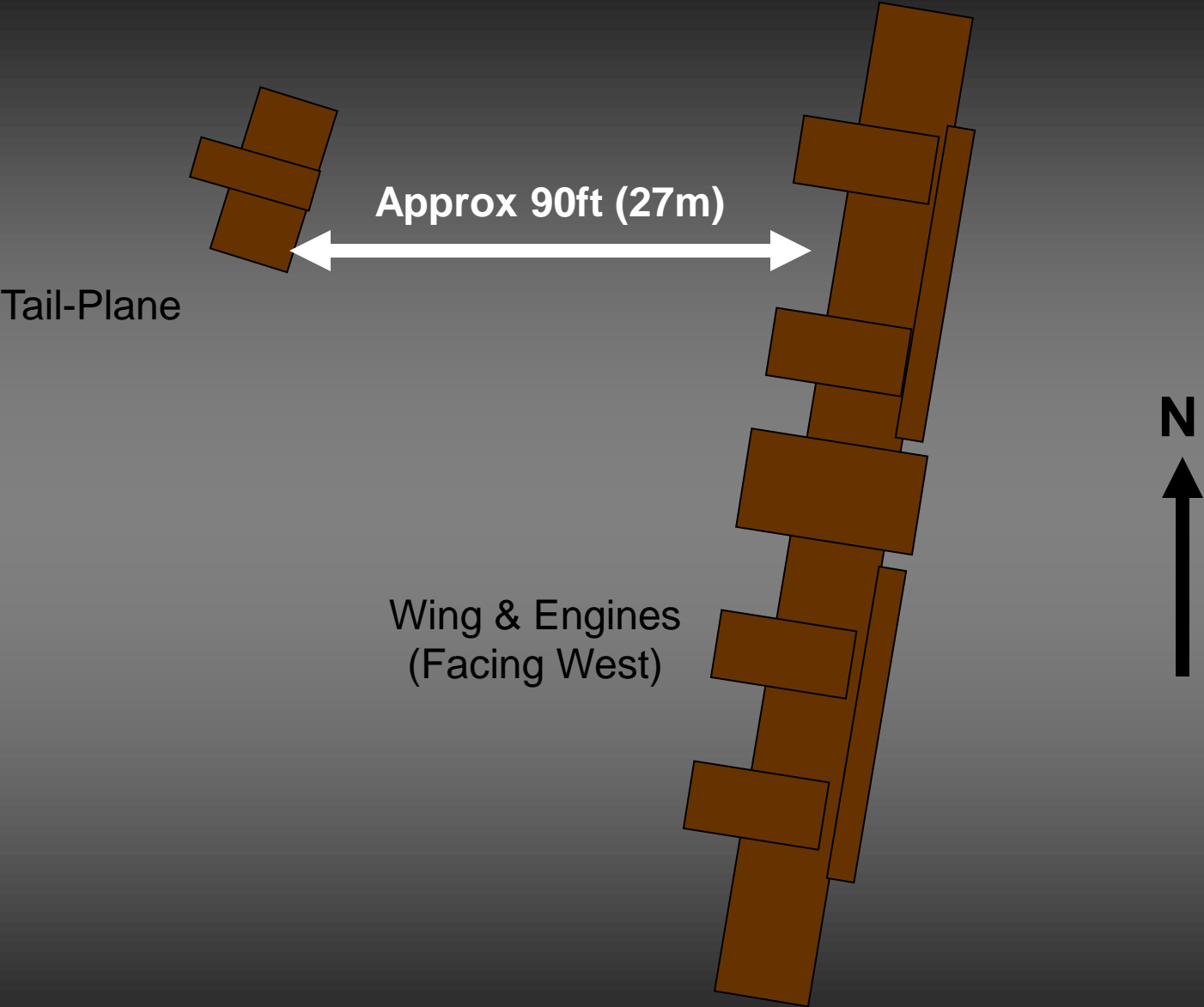
Vertical fin on its side

Vertical fin

Fuselage buried. Pieces protruding from sand.
Runs out approx NW.

Diver can see under this section

SITE LAYOUT



Course °t
000

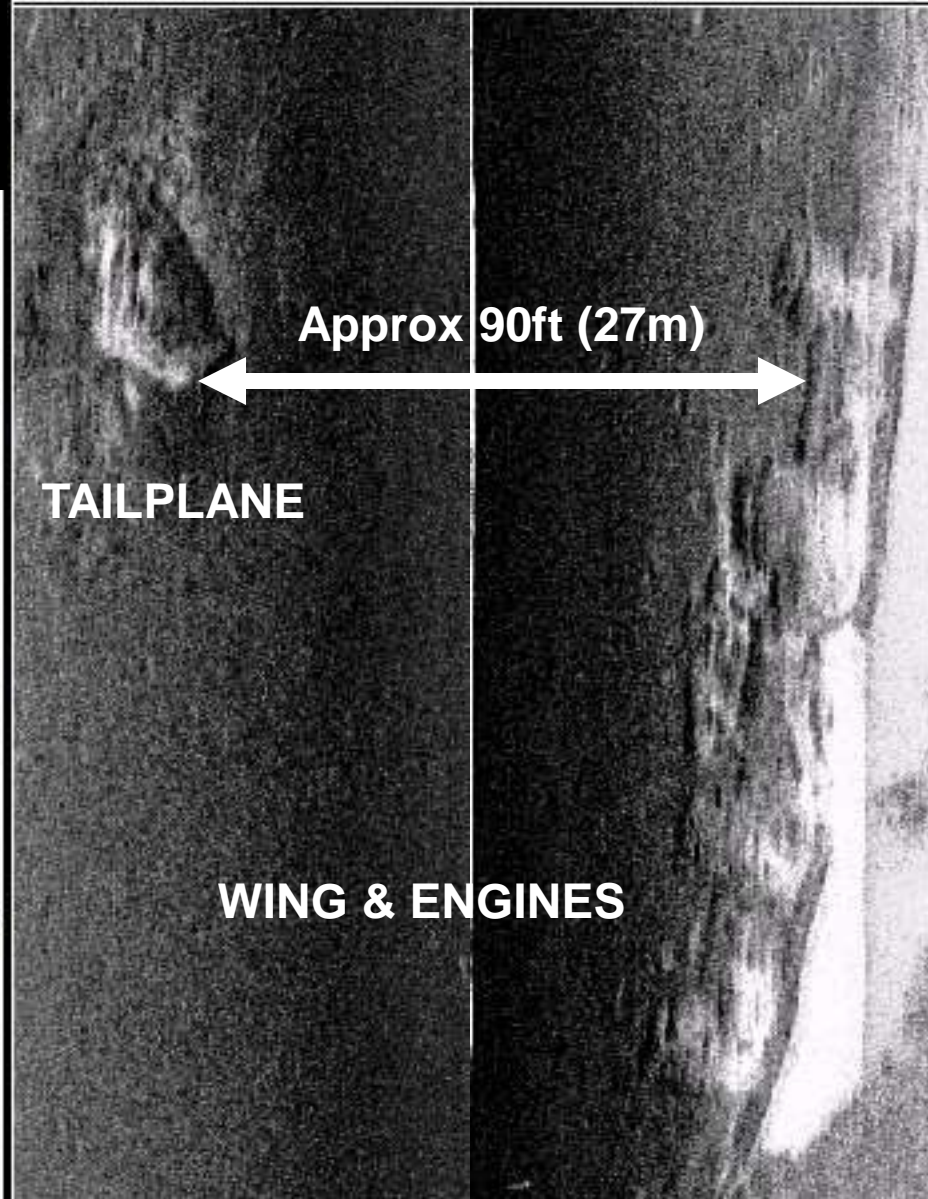
VLT V
14.1

Temp °F
77.4

Speed kts
1.7

70 Left

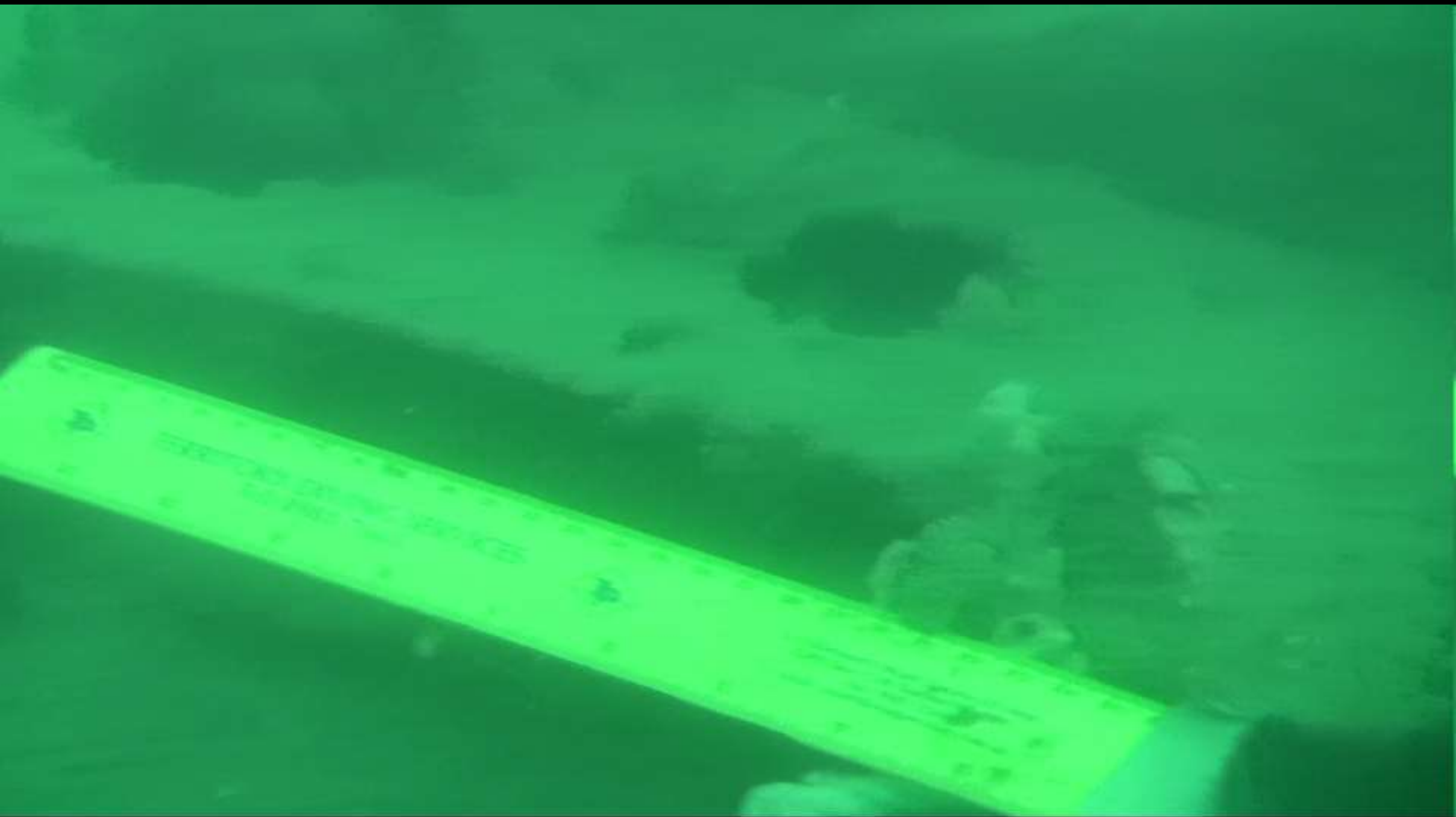
Right 70

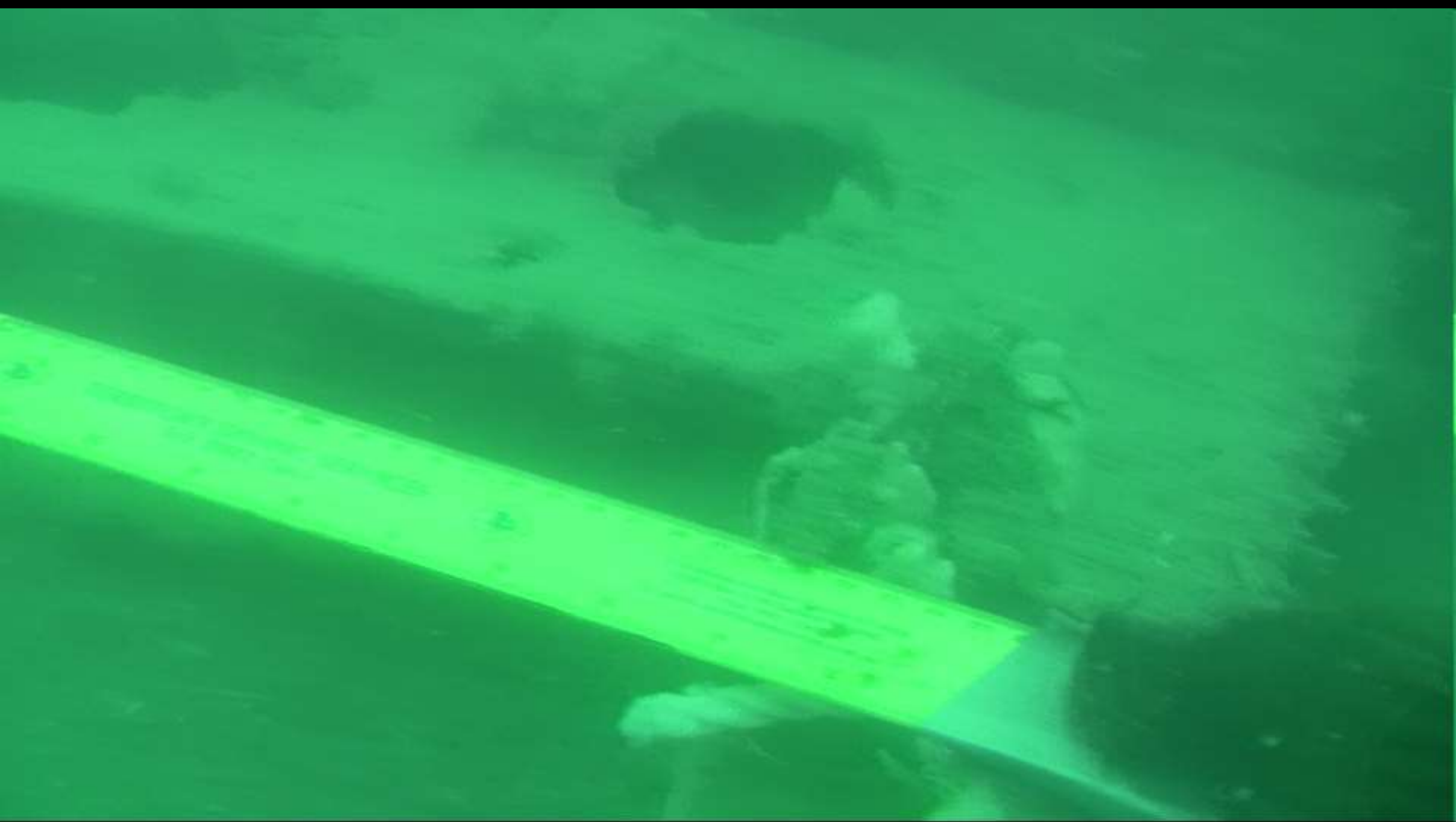


Starboard, Outboard End of Flap



Starboard, Aileron, Inboard End. (Originally fabric covered?)





Starboard Aileron and Wing Join



Starboard Aileron and Wing Join



Curved, Starboard Wingtip Entering Thin Layer of Sand



Starboard Aileron and Wingtip Join



Starboard Wingtip; Sand Cleaned Away. Black Paint?



Starboard Wingtip; Sand Cleaned Away. Black Paint?



Starboard Wingtip; Sand Cleaned Away. Black Paint?



Starboard Wingtip; Sand Cleaned Away. Black Paint?



Starboard Wing; Leading Edge Laying on Sand



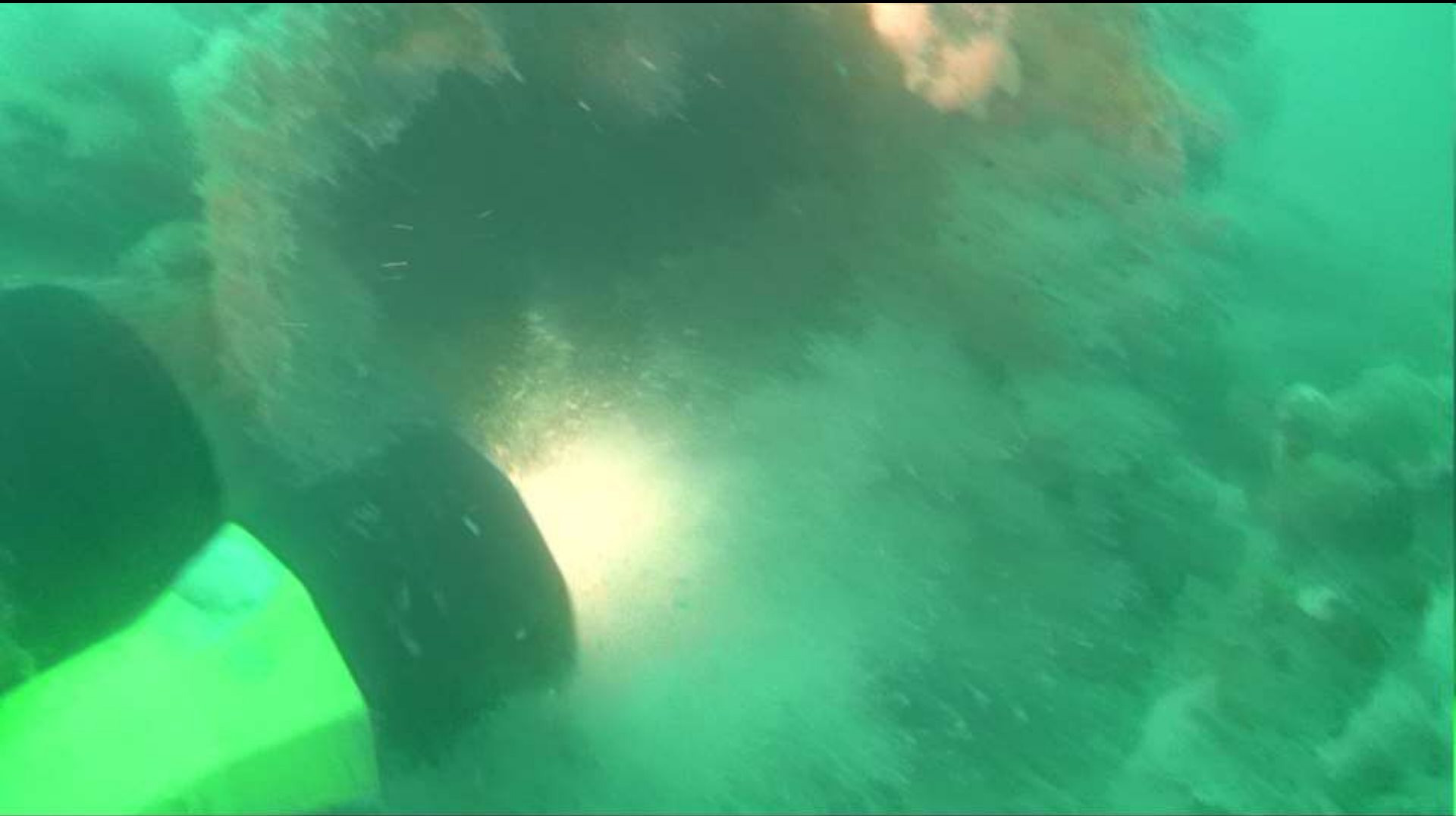
Starboard Outboard Engine Exhaust



Starboard Outboard Engine Exhaust



Starboard Outboard Engine Exhaust



Starboard Outboard Engine (Side)



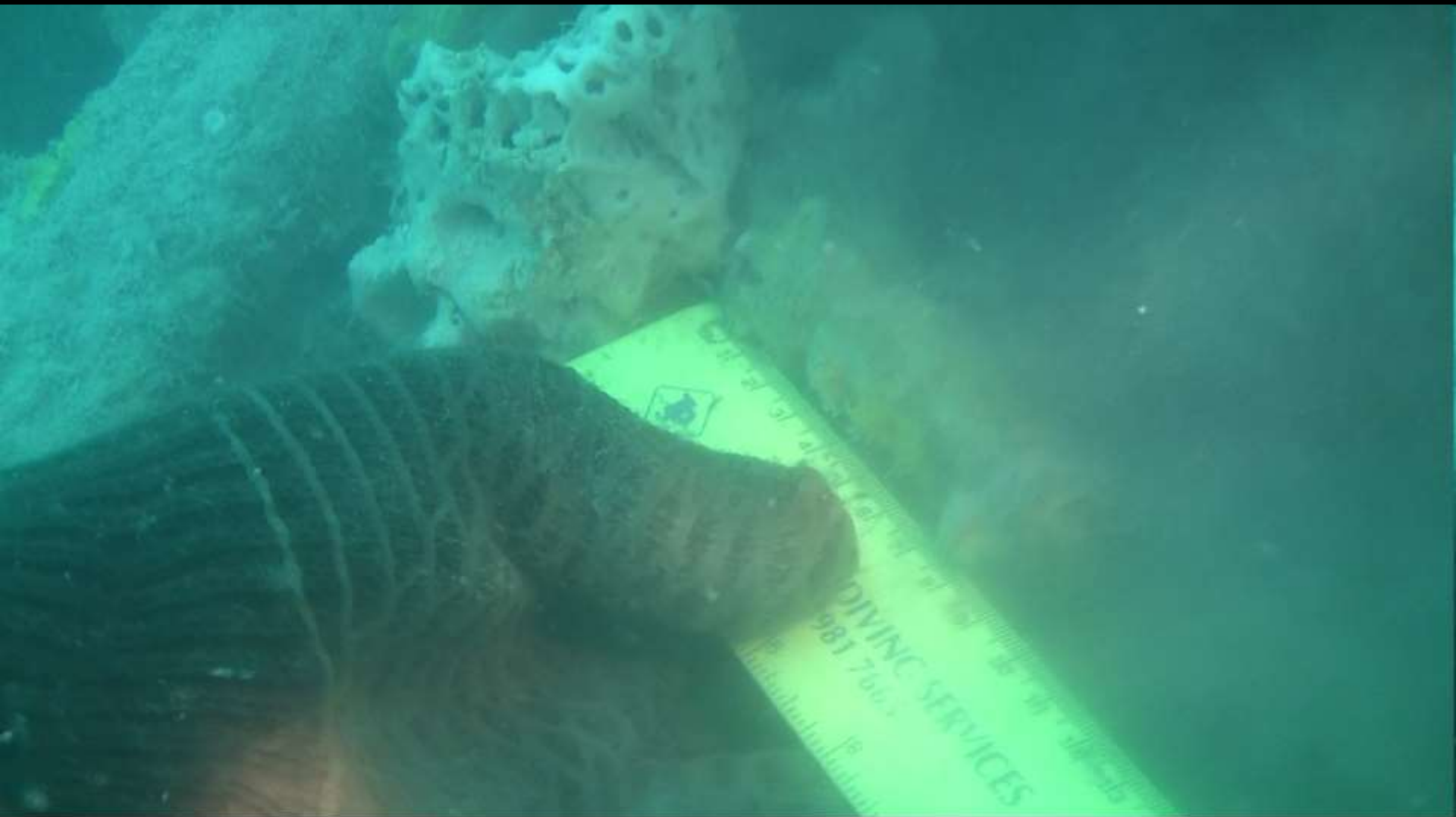
Starboard Outboard Engine; Propeller Shaft (Sheared?)



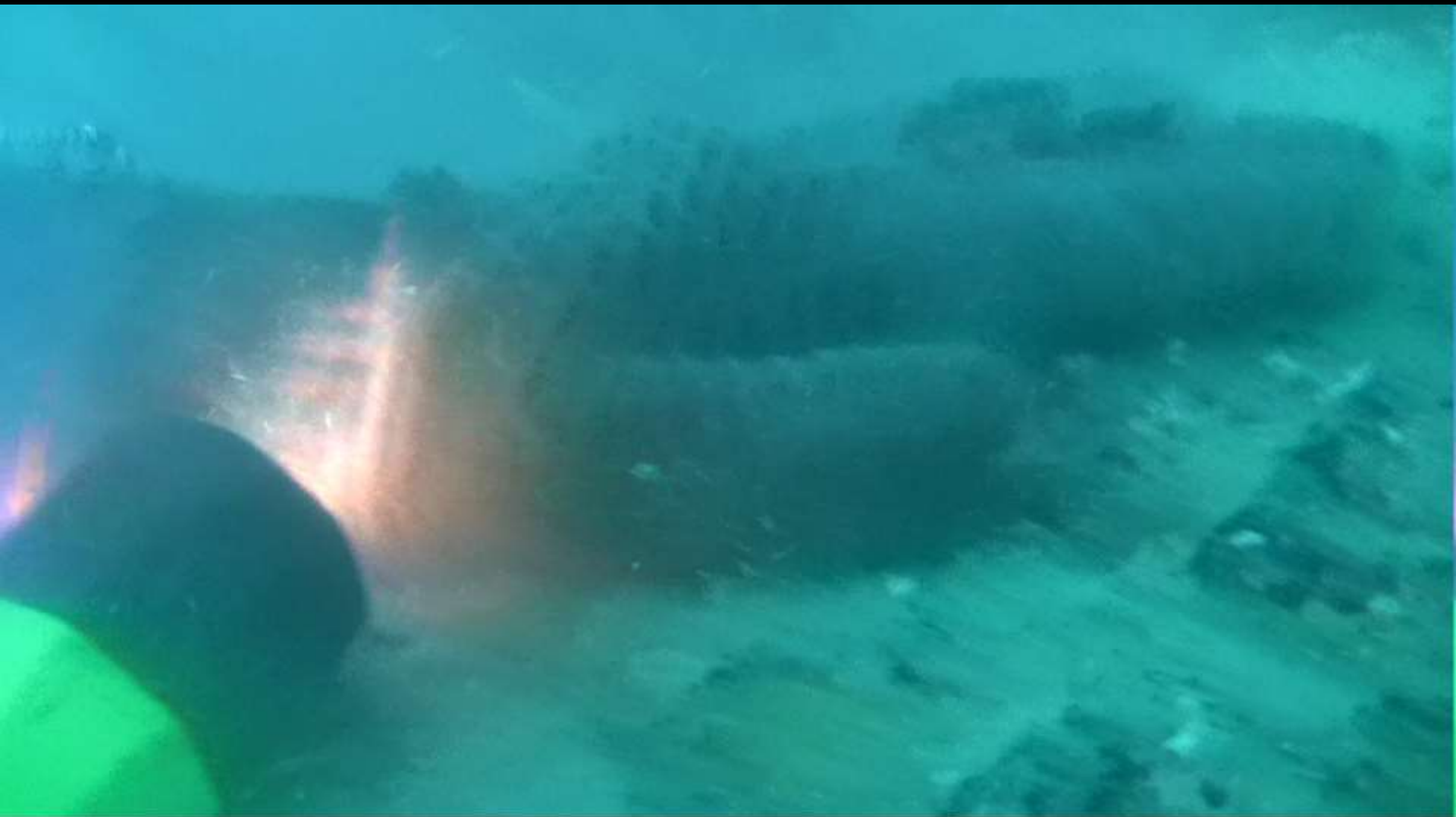
Starboard Outboard Engine Open Cowling



Starboard Wheel; Inflator Valve



Starboard Tyre (Wheels Retracted)



Twisted Mess of Fuselage (Centre of Wing)



Horizontal Stabiliser (Tailplane) Elevator



Horizontal Stabiliser (Tailplane) Elevator



Horizontal Stabiliser Rear Edge (Elevator missing)



Horizontal Stabiliser Rear Edge (Elevator missing)



Horizontal Stabiliser Leading Edge



Horizontal Stabiliser; View Looking Under. Vertical Fin to Right



Horizontal Stabiliser; End section, Vertical fin Broken Off.
Airfoil Shape Suggests that Tail is Inverted



Horizontal Stabiliser; End section, Vertical fin Broken Off.



Vertical Fin; Trailing Edge, Rudder Missing



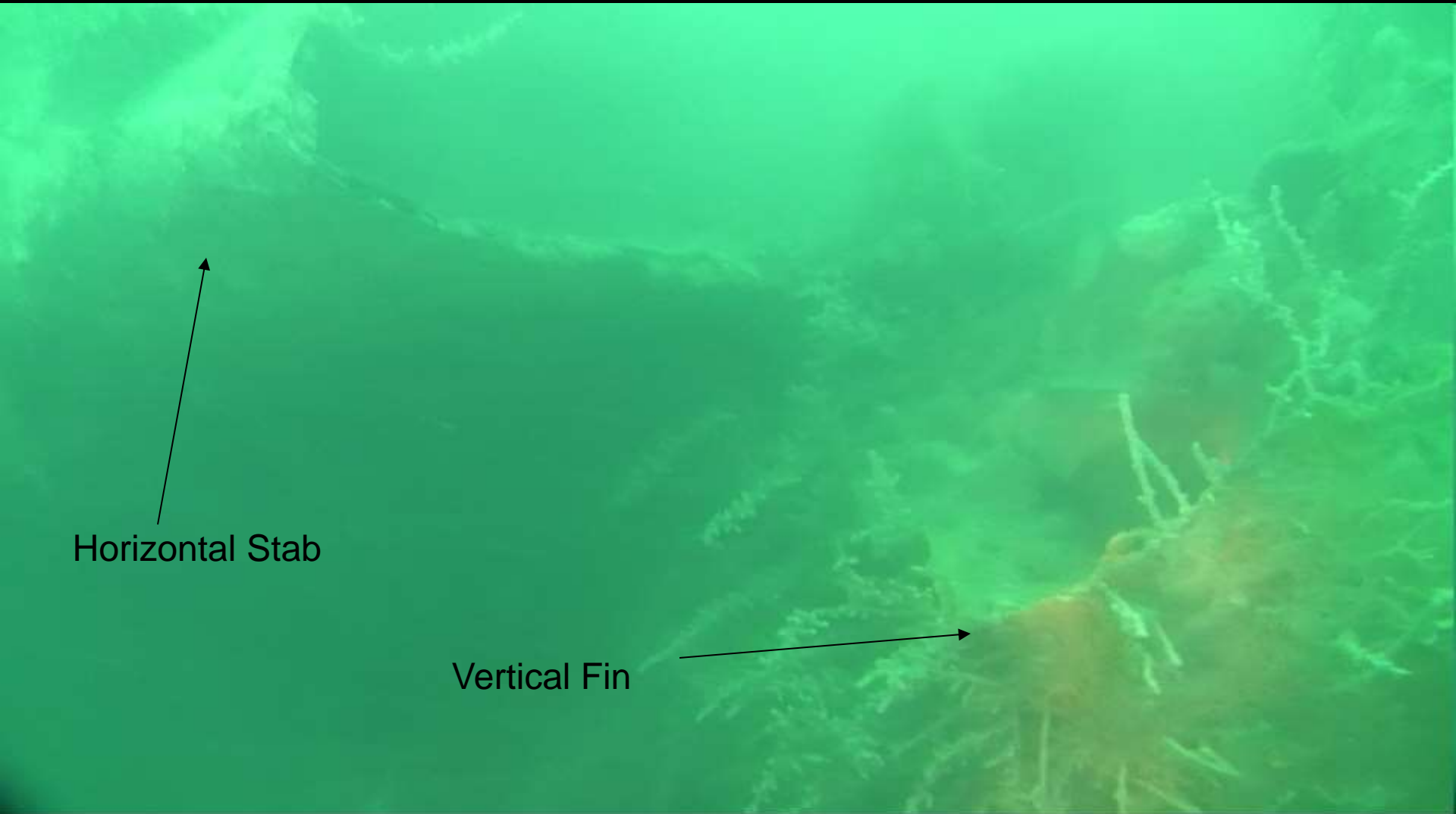
Horizontal Stabiliser; End section, Vertical fin Broken Off.



Horizontal Stabiliser; End section, Vertical fin Broken Off.
Airfoil Shape Suggests that Tail is Inverted



Horizontal Stabiliser; End section, Vertical fin Broken Off.
Airfoil Shape Suggests that Tail is Inverted



Horizontal Stab

Vertical Fin

Swimming in Direction of Buried Fuselage from Horizontal Stab (NW)



Piece of Metal protruding from Sand when Swimming NW from Stab'.

