



## **Lieut. Henry Eoin Sydney Melbourne**



**Played with Adelaide University**



**Cricket Club – B Grade (1919/20)**

**Degree – BE (1920)**

## ***Background***

***Coinciding with the Centenary of Anzacs our incentive behind the series of biographical publications is the Adelaide University Football and Cricket Club's desire to honour our players who served in the Great War (1914 - 1918). These brave men put on hold their academic, professional and sporting careers for King and Country in the name of peace and freedom. The AUFC/AUCC WW1 Memorial Committee is endeavouring to identify every one of our players who served and prepare life stories on all. This is to ensure their sacrifices and further contributions to society will be recognised by future generations.***

***On Anzac Day 2015, the Centenary of the Gallipoli landing, a memorial plaque was unveiled on the Adelaide University Oval Pavilion and this was followed by the erection of a picket fence between the pavilion and the scoreboard with each picket bearing a plaque with the name of an AUFC/AUCC player who served.***

***The following documentation relates to the life of Henry Eoin Sydney Melbourne. It is compilation of information and photographs collected from a variety of historical sources.***

## The AIF Project

<https://www.aif.adfa.edu.au/showPerson?pid=206142>




### Henry Eoin Sydney MELBOURNE

Regimental number	9577
Place of birth	Malvern South Australia
Religion	Methodist
Occupation	Surveyor
Address	Glenelg, South Australia
Marital status	Single
Age at embarkation	22
Next of kin	Mother, Mrs Elizabeth Agnes Melbourne, Hastings Street, Glenelg, South Australia
Enlistment date	4 January 1916
Rank on enlistment	Corporal
Unit name	11th Field Company Engineers, Section 2
AWM Embarkation Roll number	14/30/1
Embarkation details	Unit embarked from Adelaide, South Australia, on board HMAT A29 <i>Suevic</i> on 31 May 1916
Regimental number from Nominal Roll	Commissioned
Rank from Nominal Roll	Lieutenant
Unit from Nominal Roll	11th Field Company Engineers
Fate	Returned to Australia 9 March 1919
Miscellaneous details (Nominal Roll)	*Noted Henry George Sydney NR

# Service Record

<https://recordsearch.naa.gov.au/SearchNRetrieve/Interface/ViewImage.aspx?B=8012176>

*Longheave*  
*10-5-16*  
*Final leave 29-1-16 to 12-16*  
*F.W.W.*

**AUSTRALIAN**  **MILITARY FORCES.**

**AUSTRALIAN IMPERIAL FORCE.**

**ATTESTATION PAPER OF PERSONS ENLISTED FOR SERVICE ABROAD**

No. *9577* Name *MELBOURNE Henry Eoin Sydney*  
Unit *A* COY. 2ND DEPOT BATTALION  
Joined on *JAN 4 1916*

**Questions to be put to the Person Enlisting before Attestation.**

1. What is your Name? ...	1. <i>Henry Eoin Sydney Melbourne</i>
2. In or near what Parish or Town were you born? ...	2. In the Parish of ... in or near the Town of <i>Malvern</i> in the County of <i>South Australia</i>
3. Are you a natural born British Subject or a Naturalized British Subject? (N.B.—If the latter, papers to be shown.) ...	3. <i>N.B.</i>
4. What is your age? ...	4. <i>22 1/2 yrs</i>
5. What is your trade or calling? ...	5. <i>Surveyor</i>
6. Are you, or have you been, an Apprentice? If so, where, to whom, and for what period? ...	6. <i>N.B.</i>
7. Are you married? ...	7. <i>N.B.</i>
8. Who is your next of kin? (Address to be stated) ...	8. <i>(Mother) Mrs Elizabeth Agnes Hasting Street, Melbourne Glenelg, South Australia</i>
9. Have you ever been convicted by the Civil Power? ...	9. <i>N.B.</i>
10. Have you ever been discharged from any part of His Majesty's Forces, with Ignominy, or as Incurable and Worthless, or on account of Conviction of Felony, or of a Sentence of Penal Servitude, or have you been dismissed with disgrace from the Navy? ...	10. <i>N.B.</i>
11. Do you now belong to, or have you ever served in, His Majesty's Army, the Marines, the Militia, the Militia Reserve, the Territorial Force, Royal Navy or Colonial Forces? If so, state which, and if not now serving, state cause of discharge ...	11. <i>N.B.</i>
12. Have you stated the whole, if any, of your previous service? ...	12. <i>Yes</i>
13. Have you ever been rejected as unfit for His Majesty's Service? If so, on what grounds? ...	13. <i>N.B.</i>
14. (For married men, widowers with children, and soldiers who are the sole support of widowed mother)— Do you understand that no Separation Allowance will be issued to you after embarkation during your term of service? ...	14. <i>Yes</i>
15. Are you prepared to undergo inoculation against smallpox and enteric fever? ...	15. <i>Yes</i>

*Henry Eoin Sydney Melbourne* do solemnly declare that the above answers made by me to the above questions are true, and I am willing and hereby voluntarily agree to serve in the Military Forces of the Commonwealth of Australia within or beyond the limits of the Commonwealth.

And I further agree to allot not less than *two-fifths* of the pay payable to me from time to time during my service for the support of my *wife* <sup>and children</sup>

Date *JAN 4 1916* *H. Melbourne*  
Signature of Person Enlisted.

\* This clause should be struck out in the case of unmarried men or widowers without children under 18 years of age.  
† Two-fifths must be allotted to the wife, and if there are children three-fifths must be allotted.

wo 53270

## H. E. S. Melbourne



*Scarborough Portrait Collection*

## RSL Virtual War Memorial

<https://rslvirtualwarmemorial.org.au/explore/people/369170>

### MELBOURNE, Henry Eoin Sydney

Service Number: 9577  
Enlisted: 4 January 1916, Adelaide, South Australia  
Last Rank: Lieutenant  
Last Unit: 11th Field Company Engineers  
Born: Malvern, South Australia, June 1893  
Home Town: Glenelg, Holdfast Bay, South Australia  
Schooling: Not yet discovered  
Occupation: Surveyor  
Died: Natural causes, Adelaide, South Australia, 5 April 1976  
Cemetery: Centennial Park Cemetery, South Australia  
Memorials: Glenelg HB1\* WW 1 and WW 2 Glenelg and District, Glenelg HB4\* Moseley St Uniting Church, University of Adelaide WW1 Honour Roll Mitchell Bldg\*

### World War 1 Service

4 Jan 1916: Enlisted AIF WW1, Private, SN 9577, Adelaide, South Australia  
31 May 1916: Embarked AIF WW1, Corporal, SN 9577, 11th Field Company Engineers, HMAT Suevic, Adelaide  
31 May 1916: Involvement AIF WW1, Corporal, SN 9577, 11th Field Company Engineers, Enlistment/Embarkation WW1  
13 Jul 1919: Discharged AIF WW1, Lieutenant, SN 9577, 11th Field Company Engineers

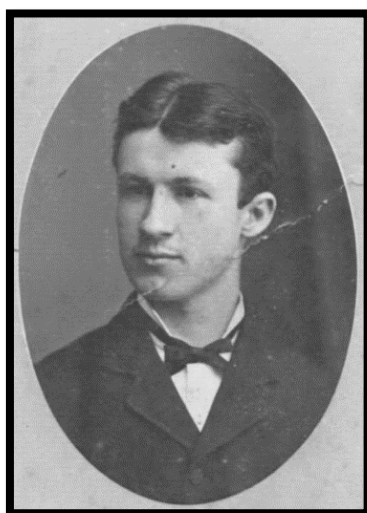
## Biography

### Early Life

Henry Eoin Sydney Melbourne was born on 25 May 1893 at Malvern to parents William Clifford Melbourne (1864 – 1924) and Elizabeth Agnes Braidwood (1862 – 1961) - SA Birth Registration 419/368. His siblings were older brother, Alexander Clifford Vernon (1888 – 1943) and younger sister, Julia Aileen (1895 – 1980) - See Appendix 1 - Family Tree.

From newspaper reports at the time of his marriage in 1926 it appears that H.E.S. Melbourne used “Sydney” as his preferred name.

Sydney’s father, a printer by trade, was active in Union activities and an early member of the South Australian Labor Party. He was on the Board of the Children’s Hospital and on the Board and one time President of the Workers Education Association. He was also active in Church affairs.



*William Clifford Melbourne*

### Schooling

Sydney went to Unley School where in 1905 he won an exhibition (scholarship). In 1906 he attended the Pupil Teacher School (Adelaide High School) where he passed his Junior Examinations in 1906, Senior Examinations in 1907 and Higher Public Examinations in 1908. In June 1909 he was awarded an evening scholarship to study at Adelaide University. In November 1909 Sydney passed Physics I at Adelaide University.

### Early Career

According to a later newspaper report, Sydney joined the Lands and Survey Department where he worked for six years on the West Coast and in the South East where he gained practical experience in land sub-division and road location. In August 1912 Sydney won the Malvern Methodist Football Club medal for most unselfish player. Sydney became a member of the Institute of Surveyors.

### World War I

Sydney enlisted on the 4<sup>th</sup> of January 1916 (SN 9577). Sydney was described as 5’ 9½”, 140 lbs, with a fresh complexion, hazel eyes and auburn hair. He enlisted as a Private but was promoted to Corporal on 1 May 1916. He proceeded overseas with the 11th Field Company Engineers onboard the HMAT Suevic which arrived in Southampton. On 25<sup>th</sup> November 1916 he left for France where he had a bout in Hospital in December. In either February or May 1917 Sydney became an acting Sergeant and later a Sergeant. From France, Sydney returned to England in November 1917 as he had been selected to attend Cadet School. Sydney qualified for a commission on 23

February 1918 and was appointed a 2<sup>nd</sup> Lieutenant, a month later he left via Southampton for Rouelles, France. On the 24<sup>th</sup> of April 1918 Sydney was wounded in action. By the 5<sup>th</sup> of May 1918, Sydney was at the London General Hospital where the wounds in his left foot and thigh were being treated. He then transferred to Cobham Hall. After some time at Sutton Veny, Wiltshire, Sydney returned to France a Lieutenant in September 1918. Sydney returned to Australia on the 9th of March 1919

## University

After returning from WWI, Sydney recommenced studying at Adelaide University and at the School of Mines. He gained his Bachelor of Engineering at Adelaide University and Fellowship Diploma from the Department of Civil Engineering at the School of Mines in December 1920.

## University Sport

Sydney played cricket for the Adelaide University Cricket Club, B Grade in the 1919/20 season.

## Career

Sydney was an assistant engineer with the Irrigation Department, when in August 1921; he delivered a paper before the Adelaide division of the Institute of Engineers on the problem of railway location along the River Murray Valley. While based in the Riverland, Sydney played cricket for Barmera in the 1921/22 season. In February 1922, Sydney was appointed lecturer of surveying under the Chair of Engineering at Melbourne University. In December 1922 he ran the annual survey camp at the St George River, Lorne where practical outdoor work was conducted as part of the course.

**Mr. H. E. S. Melbourne, B.Sc., an officer of the Government Survey Department who had been engaged in the Berri-Cobdogla area, and also at Waikerie, has been appointed a lecturer on surveying under the Chair of Engineering at the Melbourne University. He left Waikerie last week to commence his new duties. Mr. Melbourne is a son of Mr. W. C. Melbourne, the South Australian secretary of the Typographical Society, and is not yet 25 years of age. He had a brilliant scholastic career. A few weeks ago The Murray Pioneer printed a lecture he delivered before the Institute of Engineers in Adelaide dealing with railway problems on the Murray. Mr. Melbourne treated his subject in a skilful and exhaustive manner, and the article caused widespread interest among engineers and others who are concerned with the railway problems of the river.**

**Survey Camps.**  
**\*LORNE, Thursday.**—Melbourne University annual survey camp is spending three weeks on the St. George River, Lorne, under the direction of Mr. H. E. S. Melbourne, lecturer in surveying at the University. Forty-one students are in the camp. They are second-year men, and this practical outdoor work is a compulsory part of the course. The students are co-operating with the Royal Australian Air Force in producing a topographical map of Lorne and district. Experiments are being made as to the use of aeroplane photography for accurate mapping purposes in forest country. The groundwork is being done by the students, and the photography by the air force. Small engineering surveys are being made, chiefly in connection with a proposed hydro-electric scheme on the St. George River as far up as the Melba Falls. Levels, longitudinal sections, stream gauging, and the sinking of holes for a dam site, make up a complete survey of a certain length of the stream. Soundings will also be taken at the end of the Lorne Jetty as part of an imaginary scheme of harbour extension. Other streams will also receive attention. In preparation for next year's work, astronomical observations are being made, and certain office work is being done in readiness for the making of complete plans and the estimation of quantities, &c., which will be done by the students during the first three weeks of the next University year.

In July 1924 Sydney was appointed to be the Engineer and Surveyor for the Burnside District Council, SA, and from August 1924, he was the consulting engineer to the National Roads Association of Australia (S.A. Branch).

Alexander's father William Clifford Melbourne died in December 1924 (see Appendix 2 – Obituary). Sydney was involved in a range of matters for the Council including Flood Water Management, Race Course traffic management, zoning, and the development of Tusmore Park. Once back in South Australia Sydney was actively involved in reunions of the 11<sup>th</sup> Field Company Engineers and celebrations of Waterloo Day. A Pen Portrait of Sydney was published in the News in December 1926.



### Engineer and Surveyor

Mr. Henry Eoin Sydney Melbourne (engineer and surveyor, of Burnside District Council) has an aptitude for his work, and is never so happy as when he is planning details of improvements for his progressive district.

He is a South Australian by birth, having first seen the light of day at Malvern 33 years ago. His education was received at Unley School, Adelaide High School, and Adelaide University. At the latter sphere of learning he gained the bachelor of engineering degree in 1920.

For more than six years Mr. Melbourne was connected with the Lands and Sur-



MR. H. E. S. MELBOURNE

vey Department on the West Coast and in South-Eastern districts. There he obtained practical experience in subdivision work and road location.

When the war came Mr. Melbourne enlisted and served with the Australian Imperial Forces for three years, gaining a commission in the 11th Field Company Engineers. On his return to South Australia in 1919 he completed his University course, and in 1921 joined the Irrigation Commission.

Interesting experience followed on the Murray River, where preliminary survey work was in progress. Mr. Melbourne remained with the commission for 12 months, and then went to Melbourne University as lecturer on surveying. On his return to this State he began private practice as surveyor and consulting engineer. He was appointed to his present position in 1924.

Since taking office at Burnside, he has done excellent work in townplanning. Recently he submitted a scheme for zoning the district, setting out manufacturing, shopping, and dwelling areas. The idea was heartily commended.

His duties include general oversight of council works, and attention to arterial and district roads. As a member of the committee of district engineers appointed to prepare a plan to deal with Magill road floodwaters Mr. Melbourne did excellent work.

He was married in Melbourne recently. His recreations are golf and tennis.

'A Burnside councillor, HES Melbourne, was adored in this period (1920/30); he spent his own money acquiring reserves and land for residents due to a lack of funds during the Great Depression. He presided over lean but reasonable budgets and oversaw the planting of trees and foliage to beautify the city. Gordon Allen, a local resident who succeeded Melbourne as a councillor, described Melbourne: "No Council ever had a better man." Melbourne also oversaw the building of the Mount Osmond golf course, but his vision of constructing a Country Club was never realised.'

## BURNSIDE DISTRICT COUNCIL



Members and staff of the Burnside District Council—Front Row (left to right), Cnr. Henry Savage, T. F. Maher, J. A. Harper (chairman), S. G. Grant, and H. D. D. Pemberton. Second Row—Cnr. W. C. N. Waite, W. J. Barker, A. W. Webb, and J. S. Robinson. Back Row—Miss T. M. Ash, Messrs. G. W. Holton, C. W. Bradley (assistant clerk), H. H. Steele (clerk), H. E. S. Melbourne (engineer), J. F. Williamson, and Miss D. M. Howard.

1928 – Mr Sydney Melbourne – Back Row – Third from Right

In 1930 Sydney was appointed to the Board of Examiners of Surveyors. By March 1934 Sydney was the Acting District Clerk for the Burnside Council and in April 1934 he was appointed District Clerk, Engineer and Surveyor. Sydney was



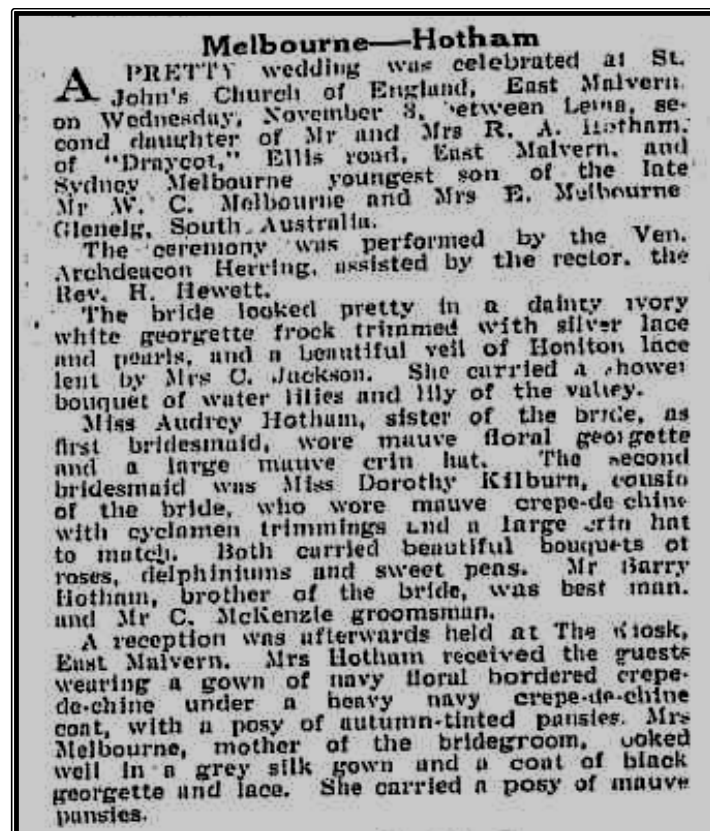
present when Burnside became a Municipality in May 1935. As a Justice of the Peace, he administered the oaths to the councillor's as their roles had changed from District to Town Councillors.



*1934 Mr Sydney Melbourne – At Right*

## Family Life

Sydney married Frances Lema Lillian Hotham on the 3<sup>rd</sup> of November 1926 in Victoria (Registration 1926/10137). On 26<sup>th</sup> May 1929 at Sister Rowe's Hospital, Adelaide the couple had a son (John Clifford Melbourne). At the time they were residing at Barker Grove, Toorak, SA.



## Interests

In 1929 Sydney was president of the Toorak Tennis Club. He was at the foundation of the Mount Osmond Country Club in December 1929 and regularly played golf at the club. Sydney also played Bridge.

In January 1940 Sydney and his family were living at Barker Grove, Toorak. In May 1940 he was a member of the board of the Rotary Club of Adelaide.

## World War II

In December 1940, Sydney joined the R.A.A.F. where he gained the rank of Wing Commander being engaged by the R.A.A.F. chiefly on aerodrome construction and important engineering works.



Mr Sydney Melbourne – Front Row – Fifth from Right

## Council Man Joins R.A.A.F.

Mr. H. E. S. Melbourne, town clerk and engineer of the municipality of Burnside, has joined the R.A.A.F. for administrative work.



Mr. Melbourne has gone to Laverton for a five weeks' training course. In his absence Mr. J. F. Williamson will be acting clerk at Burnside and Mr. G. V. Allen acting engineer.

In the last war Mr. Melbourne served with the Royal Engineers and gained the rank of captain.

He is prominent in many local government organisations, and served recently on the Building Act Inquiry Committee which revised building laws and investigated sub-standard houses.

In the organisation of the highly successful Burnside Village Fair, Mr. Melbourne took a leading part in preparatory work with the organiser, Mr. Williamson.

Some of Sydney's activities with the R.A.A.F. are described in the booklet 'Always First, The RAAF Airfield Construction Squadrons, 1942-1974', by David Wilson. (pages 54 and 55).

A detachment of 150 officers and men from 6MWS travelled by barge from Gili Gili and arrived at Kiriwina on 3 August 1943; the same day as the 4WMU detachment. Unit personnel had gathered at Ascot Vale on 10 December 1942 before moving to Royal Park on 17 December. By 19 January 1943 the unit had moved to Bankstown, New South Wales, from where an advance party led by Pilot Officer J.D. Alexander departed on 27 January. The party departed from Townsville by Dakota for Milne Bay on 3 February.<sup>22</sup> The remainder of the unit embarked on the *George W McCrary* which arrived at Milne Bay ten days later where the unit constructed 1,600

metres of the proposed 1,829 metre sealed runway being built parallel to the existing PSP strip before deploying to Kiriwina on 30 July 1943. However, the unit was criticised for being 'rather slow in getting on with the strip'.<sup>23</sup> The Commanding Officer of 62 Works Wing, Wing Commander H.E.S. Melbourne, agreed but pointed out that the unit had been formed hurriedly and consisted of a high proportion of unskilled and untrained men, that the unit was 15 per cent under strength and that Squadron Leader J.F. Keays, the commanding officer, was 'gradually welding his unit into an efficient organisation and his construction methods cannot be faulted. A high standard of work can undoubtedly be expected from this unit in a very short time'.<sup>24</sup> This prophecy was vindicated. The combined effort of 4MWU, 6MWS and American units, including the 856th Engineer Aviation Battalion, resulted in the airstrip on Kiriwina being serviceable for use by aircraft participating in the first large scale raid on Rabaul on 12 October 1943.

## Post WWII

After WWII, Sydney returned to his role as Town Clerk at Burnside. In March 1946 Sydney was appointed as a new member of the South Australian Housing Trust Board. In this role he was involved in the planning of the city of Elizabeth, having been on a study tour in England to observe the planning of new towns in that country.

## New Member Of Housing Trust

A veteran of two wars, Mr. H. E. S. Melbourne, town clerk and engineer for the Burnside Corporation, was today appointed by Executive Council a member of the South Australian Housing Trust.



Mr. Melbourne gained the rank of wing commander in World War II, being engaged by the R.A.A.F. chiefly on aerodrome construction and important engineering works.

He was a member of the Honorary Building Act Inquiry Committee, which conducted a survey in 1940 into slum conditions in the metropolitan area. This committee also produced reports revising the Building Act and regulations.

## Oval Inspection At Kensington



MEMBERS OF BURNSIDE COUNCIL'S oval committee today inspected Kensington Oval and dressing room to consider improvements. Pictured in the dressing room are (seated, from left) the town clerk (Mr. H. E. S. Melbourne), Ald. F. L. Parsons, Cr. P. R. Claridge, and (standing) the Mayor (Mr. T. R. Mellor), Crs. A. L. Slade and J. H. Parkinson.

1948 - Mr Sydney Melbourne - Seated at Left

## Trust party on visit



MEMBERS of the SA Housing Trust Board today visited Salisbury to discuss with local councillors plans for a town to accommodate 25,000 people expected to be established in that area by the trust. FROM LEFT—Messrs. D. V. Fleming and H. E. S. Melbourne, Sir Henry Barwell, and Messrs. A. C. Hogben (deputy chairman), J. P. Cartledge (chairman), and SA Housing Trust general manager (Mr. A. M. Ramsay)

1950 - Mr Sydney Melbourne – Top Photo - Centre

‘Planning a Good City in Australia, Elizabeth as a new Town’, Mark Peel, provides some details relating to Sydney in 1956.

The Trust did intermittently register its reliance on the English planning movement. By the mid-1950s, the Housing Trust ‘tour’ of the English new towns was well-established. Geoff Shedley, the major architect, and Vic Barrell, the manager of rental estates, did the tour in 1954, and they were followed by engineer-planner H.E.S. Melbourne in 1956. Barrell suggested to Melbourne that he visit Harlow, Crawley, Stevenage, Hemel Hempstead, Welwyn, Letchworth and Cwmbran, the latter especially because “we have copies of their plans and have discussed their ideas”.<sup>42</sup> As Ramsay noted in 1956, “[i]n addition to the Trust’s practical experience of all aspects of housing in city and country, the best theoretical and technical knowledge has been devoted to the task”.<sup>43</sup> Australian know-how, with overseas theory, would guarantee good design.

The actual planning of Elizabeth involved a large number of the Trust’s staff. Small planning groups dealt with particular parts of the design, but the overall direction was supplied by Henry Smith (a planner) and two engineers: H.E.S. Melbourne and G.E.Stolz. Ramsay, as General Manager, provided publicity, ideas and support and ensured that the project remained visible as a key component of the ‘Playford Plan’.<sup>44</sup> For all that, the planning of Elizabeth was not, from the evidence of the records, a particularly self-conscious planning process. If there were extended discussions of motivation, philosophy or social ideology, they were not written down. Perhaps the small planning groups and the senior officials practiced a largely oral administrative and decision-making culture, but it seems also that they assumed no need to record any ongoing deliberations over the plan. Only in Annual Reports to the Parliament was



As newspapers for the period after 1954 have not yet been digitised , no further details of Sydney's life are available.

His mother passed away in 1961 at the age of 99.

## Death

Henry Eoin Sydney Melbourne passed away in Adelaide, South Australia on 5 April 1976 (aged 83). He was cremated at Centennial Park, Adelaide.



**Australian Surveyor >**  
Volume 28, 1976 - Issue 3

### IN MEMORIAM

**The Institution recently lost through death, and records their passing with deep regret:**


**Henry Eoin Sydney Melbourne, Foundation Member of the Institution, South Australia Division.**

Sydney was survived by his wife, Lema, who passed away on the 5<sup>th</sup> of August 1987.

## Legacy

John Clifford Melbourne attended St Peter's College then followed his father to Adelaide University and the School of Mines. He graduated with a Bachelor of Engineering in Metallurgical and Chemical Engineering in March 1952.


## Appendix 1




### William Clifford MELBOURNE

1864–1924


When William Clifford MELBOURNE was born on 16 February 1864 in Naracoorte, South Australia, his father, Henry, was 29 and his mother, Barbara, was 24. He married Elizabeth Agnes BRAIDWOOD on 31 December 1886 in South Australia. They had three children during their marriage. He died on 16 November 1924 in Glenelg, South Australia, at the age of 60.




**Alexander Clifford Vernon (Prof) MELBOURNE**




**Henry Eoin Sydney MELBOURNE**  
BE, AMIE, (Aust.)



**Julia Eileen MELBOURNE**




**William Clifford MELBOURNE**



**Elizabeth Agnes BRAIDWOOD**



**Henry John MELBOURNE**



**Barbara McLACHLAN**





# Henry Eoin Sydney MELBOURNE BE, AMIE, (Aust.)

**BIRTH** 25 MAY 1893 • Malvern, South Australia  
**DEATH** 1978

Alan Melbourne family

1893  
(AGE)

## Name

Henry Eoin Sydney MELBOURNE BE, AMIE, (Aust.)  
16 Sources

## Gender

Male

1895  
1

## Birth

25 MAY 1893 • Malvern, South Australia  
5 Sources

1914  
21

## Birth of Sister Julia Eileen MELBOURNE (1895–1980)

14 MAR 1895 • Malvern SA

## Military

1914-1920 • Adelaide, South Australia  
1 Source

1922  
29

## Residence

1922 • 40 Nicholson St, Fitzroy, Gertrude, Yarra, Victoria, Australia  
1 Source

1924  
31

## Death of Father William Clifford MELBOURNE (1864–1924)

16 NOV 1924 • At his home in Glenelg, South Australia

1924  
31

## Residence

1924 • 40 Nicholson St, Fitzroy, Victoria, Australia  
2 Sources

1926  
33

## Marriage

1926 • Victoria, Australia



**Frances Lema Lilian HOTHAM**  
(1897–)

2 Sources

1930  
37

## Residence

1930 • Burnside, South Australia, Australia  
1 Source

1934  
41

## Residence

1934 • Burnside, South Australia, Australia  
1 Source

1939  
46

## Military

1939 - 1948  
1 Source

1939  
46

## Residence

1939 • 19 Barkers Grove, Toorak Gardens, Burnside, Boothby, South Australia, Australia  
1 Source

1943  
50

## Residence

1943 • Burnside, Boothby, South Australia, Australia & 109 Park St, RAAF, Victoria  
2 Sources

1956  
62

## Arrival

27 Mar 1956 • London, England  
1 Source

1961  
68

## Death of Mother Elizabeth Agnes BRAIDWOOD (1862–1961)

24 DEC 1961 • Adelaide, SA (Reg Dist 1)

1978  
85

## Death

1978

## Departure

Sydney, Australia  
1 Source

## Occupation

Engineer, Town Clerk of Burnside CC

## Family

### Parents



**William Clifford MELBOURNE**  
1864–1924



**Elizabeth Agnes BRAIDWOOD**  
1862–1961

### Siblings

### Spouse & Children



**Frances Lema Lilian HOTHAM**  
1897–



Private



Private

## Appendix 2

Australian Christian Commonwealth (SA : 1901 - 1940), Friday 12 December 1924, page 14

### IN MEMORIAM.

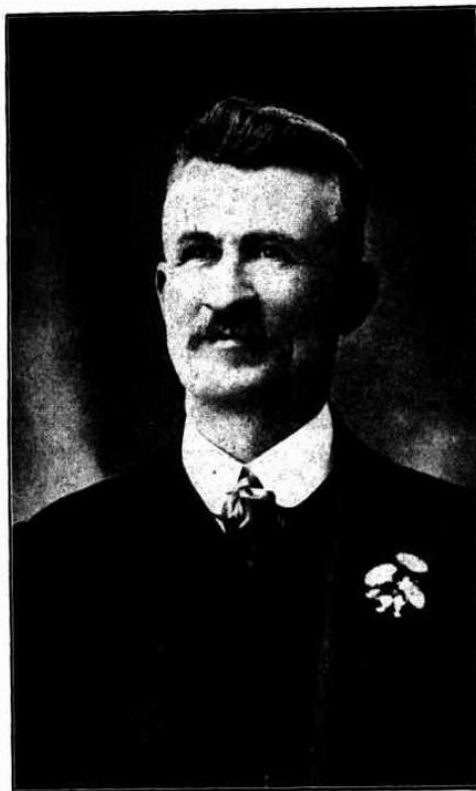
#### MR. W. C. MELBOURNE.

William Clifford Melbourne was born at Naracoorte in 1864, and after a brief schooling he was at an early age apprenticed to the printing trade. Later for a short time he followed his trade in Victoria, then moved to Adelaide, where he resided until his death. For more than twenty years he was on the staff of the "Advertiser," but left this work to undertake the duties of Secretary of the South Australian Typographical Society. In his early years he had a great desire to become a minister of the Gospel, but the way not opening he determined to make his life one of service. His warm, sympathetic nature made him feel keenly the sufferings of others. This led him to become one of the early members of the Labour Party. His counsel was eagerly sought and freely given, and for one year he was President of the Party. During his Presidency feeling ran high on the Conscription issue, but with honesty

and courage he marked out his own line and pursued it. In the industrial world he enjoyed the confidence of his fellows and was their representative on the Board of Industry, the Advisory Board of Education, and Apprentices' Board. He took his duties seriously and attended the Law Lectures at the Adelaide University to enable him to carry out his work efficiently. His justice and candour were appreciated, and at a meeting of the Board of Industry, at which the President (Dr. Jethro Brown), and Messrs. S. Perry, W. T. Rofe, and F. McCabe were present, the following resolution was carried:—"The Board of Industry records its profound regret at the death of William Clifford Melbourne, and desires to acknowledge the invaluable services rendered to the Board and to the community by its late member."

Mr. T. R. Bright, S.M., bore this testimony:—"While sitting as Acting-President of the Industrial Court, it was my privilege to be associated with the late Mr. W. C. Melbourne as a member. May I be permitted to say what in my opinion the world at large has lost by his early decease. Strong as his convictions were as to the principles he advocated, no one could have been more tolerant to those who differed from his views. How many of the world's differences would be overcome were there more like him!"

In education matters Mr. Melbourne was an enthusiast, and he carefully studied authorities available. He was a member of the Executive of the Workers' Educational Association and served one year as President. His services were freely given to all movements making for social happiness. He was on the Executive of the S.A. League of Nations Union and a member of the Board of Management of the Children's Hospital. His industrial and social work did not prevent him from rendering service to his Church. At Malvern he was a Sunday-school teacher and for some years superintendent, and at a later period he was superintendent of the Moseley Street school at Glenelg, and he was for one year vice-president of our Methodist Sunday-school Department. For some years he had been circuit steward at Glenelg and was a member of our Annual and General Conferences. His sympathy for the suffering made him an ardent Prohibitionist, and he did much valuable work for the cause. He had a very large circle of friends in all classes of society, and they bear tribute to his worth. The funeral service at West Terrace was conducted by the Rev. C. E. Schafer. A very large gathering assembled at the grave side, and hundreds of his fellow-unionists joined in the funeral procession. During his last illness he was wonderfully patient and had complete faith in Christ his Saviour.



THE LATE MR. W. C. MELBOURNE.

## Sources and Acknowledgements:

The AIF Project <https://www.aif.adfa.edu.au/>

RSL Virtual War Memorial <https://rslvirtualwarmemorial.org.au/explore/>

The National Archives of Australia <http://recordsearch.naa.gov.au/>

War Memorial <https://www.awm.gov.au/collection/>

The Adelaide University <http://www.adelaide.edu.au/records/archives/>

The National Library of Australia <http://trove.nla.gov.au/newspaper/>

(Trove Newspaper articles tagged – Henty E.S. Melbourne)

SA Genealogy <https://www.genealogysa.org.au/resources/online-databases.html>

Victoria BDM <https://online.justice.vic.gov.au/bdm/indexsearch.doj>

SA Centennial Park <https://www.centennialpark.org/memorial-search/>

[https://en.wikipedia.org/wiki/History\\_of\\_Burnside](https://en.wikipedia.org/wiki/History_of_Burnside)

Warburton, E: The Paddocks Beneath – A History of Burnside from the Beginning, published 1981

‘Always First, The RAAF Airfield Construction Squadrons, 1942-1974’, by David Wilson

“Planning a Good City in Australia, Elizabeth as a new Town”, Mark Peel

Rob O’Shannassy AUFC/AUCC WW1 Memorial Committee Researcher