

THE MOUNT COMPASS ARCHIVES

CHRONICLE

A FORUM TO PROMOTE THE HISTORY & ARCHIVES OF MOUNT COMPASS

No 7 SEPTEMBER 2019



Mount Compass 1947 Country Cricket Carnival Team

This proud group of cricketers represented Mt Compass at the Country Cricket Carnival Association's annual competition in 1947. This was held over a two week period in March of that year with 46 country teams competing on 23 city & suburban ovals. This Mt Compass team finished in a creditable 20th place with 4 wins, 1 draw and 3 losses.

The members of this team were also some of the key citizens here in Mount Compass during the 1940s and beyond.

In the back row, left to right are: Lou Bell, Stan Hales, Ray Stone, Murray Hibbard, G Braithwaite and W (Bill) Hailstone. The front row consists of: Sam Curnow, Erk Anderson, Geoff Stone (Captain), Reg Verrall (vice Capt) and Cyril Anderson.

During this period, the community based Mount Compass Co-operative Store was establishing itself as the only grocery store in Mt Compass. Four of the men who played in the above cricket team also formed the majority of the Co-op's seven person Management Committee. E E (Erk) Anderson was the inaugural Chairman of this Committee with R G (Ray) Stone being the first Secretary. G S (Geoff) Stone and Warren W (Jim) Ellis were also on the Committee. Jim Ellis was absent from this formal photograph but did play in the competition (he signed the reverse of this photo with the rest of the team). Inside this edition is the story of Mt Compass' Co-operative days.

Photographs and articles in the *Chronicle* can be copied for non-commercial purposes provided the Mt Compass Archives are acknowledged as the source.

Editorial

Thank you for the positive feedback many readers have provided. It does show there is a definite interest in our past from both the 'old' hands and also the more recent arrivals.

The history of Mount Compass since colonisation may be from more recent times than for many of our Fleurieu cousins, but this does not mean it is any the less interesting. This edition of the "**Chronicle**" focuses on the South Australian movement known as 'Common Cause' and its offspring, the Mt Compass Co-operative Store. This store existed for almost 16 years during which time it helped change the face of Mount Compass as we know it.

Originally operating from the area bounded by Tay Road and Peters Terrace, this Co-operative owned a large parcel of land but later relocated to what is now the Main Road retail strip. Prior to this move they had started to sell some of their land, 5 acres of which the SA Housing Trust purchased. This block then went on to become the first 'suburban' area of our township. Over time the Co-op land was gradually sold and as this edition shows, became the central residential area of Mount Compass.

Of the first seven members of this Co-op's Management Committee four of them were also members of the 1947 Mt Compass Carnival Cricket team. This close tie between Sports and development in Mt Compass is an area the **Archives History Group** is currently seeking help with. If you have any particular memories of involvement with any of the sports played in Mt Compass, we would like to hear from you. If possible we would appreciate people writing down their recollections and thoughts on any sports they were involved with. Over time it is anticipated that we can produce a publication detailing the history of each of our sports - how they started right up to current times. In the Archives we do have some written work and interviews relating to the earliest sporting days, but any anecdotes or information on developments from the 1950s onwards would be of great help. The information provided would not necessarily need to be a work of perfection - just your reflections of life within your club(s).

Finally, as former residents pass on a number have not been sufficiently recognised in this publication. If you do happen to attend the funeral of someone previously connected to this district, please consider sending in a copy of the eulogy. Alternatively write a few notes yourself to send in with hopefully, a copy of any Memorial Card handed out. Any contribution is appreciated.

Steve Kettle

AN INTRODUCTION TO MT COMPASS (1948)

The average person passing through Mount Compass may not realise that this gardening and dairying district is striving to establish a community centre in keeping with the prevailing community spirit. Post-war shortages are, as elsewhere, hampering various aspects of this desired progress; even so, much has been achieved.

Fifteen months ago, the small business on the Adelaide side of the township was made a co-operative one, being purchased by sale of shares, almost 100 per cent of which were taken by local residents. During the first year of trading, business increased beyond all expectations, the turnover passed the figure of £25,000. The shop space in spite of every possible increase, is a factor causing great concern to the management committee and staff. The latter, having commenced with a manager and one assistant, now comprises ten persons. This business entails a weekly delivery to points widely spaced; from Cut Hill to Wilunga Hill, Hope Forest, Nangkita, Yundi, several miles on the Goolwa and Cleland Gully roads, also to Myponga.

News reports from the past

CO-OP. CHAIRMAN'S REPORT.

The chairman of Mount Compass Co-operative Store Ltd., said at the annual meeting, that the year's trading had resulted in a satisfactory surplus of £648 which represented a return of 12.7% on members' funds invested in the business. There are 287 members with a share capital of £3,814/8/8, general reserve stands at £1,286 and total members' funds represent 61% of the total assets. Interest on capital was declared at 5% and a rebate on members' purchases of 1/1 in the pound is to be made.

Above: An item from the *Victor Harbor Times* dated 16th July 1954.

Left: This item was also printed in the *Victor Harbor Times* - on 5th March 1948.

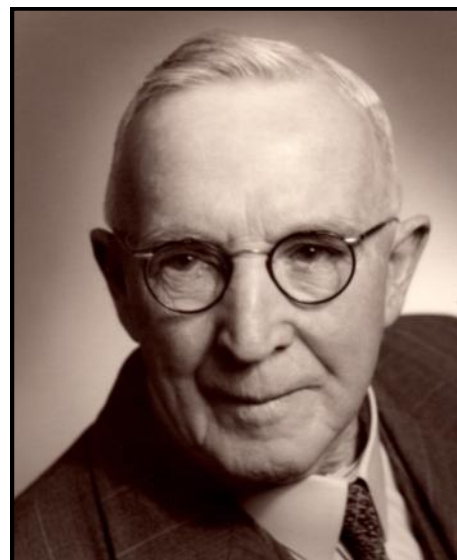
The Co-operative Years of Mt Compass

The Formative Years

In 1943 during World War II, a group of concerned individuals met in Adelaide to discuss how to promote the concept of people working together to make the world a better place. From this meeting came the South Australian movement known as *Common Cause*. This was an education-driven movement that took aim at (as quoted in newspapers at that time) “the old foes of ignorance, pedantry & routine”. They sought to be non-partisan with people coming together as a society where unemployment would be eliminated along with equal opportunities for all. As quoted in the “Chasing Rainbows in the Rain” history book, they believed a victory in the war would come from “people having full knowledge of what they were fighting for and the true meaning of democracy”.

Well known local Charlie Verco of Lanacoona Stud was a member of the Adelaide Committee of *Common Cause* and became a key promoter here in Mt Compass. In 1944 the Hall was hired out on four occasions to supporters of the *Common Cause*, who it is presumed, involved themselves in some very earnest talks and discussions. At this time it is also very likely that a number of residents were becoming war-weary as the Second World War stretched on into its sixth year. These were very dark and strange times. The casualty list of those serving from Mt Compass was growing, shortages and rationing became the norm and by 1944 even ‘enemy’ Italian Prisoners of War had started working and living with local families. The Hall was booked again for further meetings by this group in both 1945 and 1946.

In 1944 something very interesting was also happening in Nuriootpa. At a public meeting held there, a motion to form the **Nuriootpa War Memorial Community Centre Inc** was passed on 3rd April. In that same year residents there also formed a **Co-operative** to take over the operation of a local store. This all followed a year of background work in that town by supporters of the same *Common Cause* movement that was holding meetings here in Mt Compass. These two Nuriootpa events were to prove very influential on future developments here. Speakers from that town travelled to Mt Compass talking at local meetings and hosting return visits from some of our residents. At Nuriootpa, they quickly focused their thoughts on building a Community Centre and Community Village, along with a kindergarten, baby health centre and a full size swimming pool. The Nuriootpa Co-operative continues to successfully operate to this day in the Barossa Valley, boasting over 18,000 members with 300 employees and it is certainly worth a visit.



Charlie Verco c1960. This photograph was kindly supplied by his grandson Doug Schultz

During the past twenty-five years, the movement has developed rapidly, especially in London. The British movement now has over nine million members, does a retail trade of £360 millions, a wholesale and manufacturing trade of £160 millions. The C.W.S. runs about 160 factories making every conceivable article for domestic use. The C.W.S. Bank has a yearly turnover of over £1,000 million, and its policy is directed by a board of twenty-eight individuals, all elected from the retail societies' members.

During the depression period, when the Australian trading banks were difficult as to advances, it was the C.W.S. Bank that advanced £3 millions to the Westralian Farmers on the security of their prospective wheat crops.

Through consumers' co-operation the British people are literally buying back their ancient heritage. Large estates, with historic mansions, are passing into the ownership of co-operative societies, the homes being used for recreation or convalescence, and the land for agricultural purposes.

It is by no means coincidental that we formed the similarly named **Mt Compass War Memorial Community Centre Inc** here in 1953 after seeing what could be achieved through that tremendous community effort in Nuriootpa.

The early Mt Compass *Common Cause* members were also among the key people pushing the Committee to call a public meeting which led to the formation of our current *Mt Compass War Memorial Community Centre Inc*. Ray Stone remarked in a 1984 recorded interview that he was one of the ‘stirrers’ who tried to get members of the public onto the original Hall Committee other than those whom he considered at the time, were being chosen by the Hall Trustees.

Continued on next page ...

Left: This is one section of the booklet “Service for Democracy”, printed by the Educational Committee of the Adelaide Co-operative Society. This booklet was located with the Co-op’s Archived records and is thought to have been printed in the 1940s.

Continued from previous page

Broadening the membership of committees like this was the type of topic discussed at Mount Compass' *Common Cause* meetings, Ray explained.

The 1953 Community Centre's constitution closely reflected the aims promoted by both the short-lived *Common Cause* movement and the ideas espoused by the spreading Community Co-operatives. This is one small quote from that interesting and idealistic constitution:

"...promoting projects which are calculated to improve the educational (mental, moral & physical) standards of the residents of the township and district...or benevolent projects as a Baby Health Centre, Kindergarten, Sports Ground, Playground, Swimming Pool, Club Rooms (for children and/or adults), Gymnasium Rooms, Library, Social Halls, Picture Theatre, Literary and Debating Society..."

One of the first projects the Mt Compass *Common Cause* supporters decided upon was the formation in 1944, of an *Institute Library*. This development they believed would be a proposal that everyone could support. (*Some of the original records from this Library are now stored in our Town Archives –Ed.*) They then organised working bees to maintain the town cemetery, for similarly altruistic reasons. At the time this group began to organise meetings, communist USSR had been fighting in World War 2 on the side of the allies and the political concept of individuals working for the betterment of society as a whole had not yet run up against the 1950s Cold War ideologies. As Ray Stone was to later comment, "the Russians were on our side at that time" and he went on to state that the *Common Cause* people wanted to "get the support of both left and right."

A Co-operative is Formed

Following the success of their first two endeavours, the *Common Cause* supporters progressed to discussing the possibility of operating their own retail business. The existing Beaumont's Bakery was their first consideration, with Charlie Verco visiting the owner Mr E M (Snow) Beaumont, to discuss the businesses' turnover and a possible sale price. They carefully looked into this commercial possibility but after receiving professional advice, it became clear that this business was not the right fit for their goals. An accountant on the Nuriootpa Co-operative's Board, Sam Denton, assisted the people here with advice and professional referrals as did the *SA Fisherman's Co-operative* Secretary, Lance Le Cornu (this particular Co-operative would go on to become SAFCOL). Both these men visited Mt Compass to offer advice, with Mr Denton later going on to become Chairman of Horwood-Bagshaw Ltd while Mr Le Cornu was part of the well known family furniture business. The end result of all this high-level advice was that a Co-operative did eventually come into Mt Compass but via a business that better suited their requirements.

In 1946, the **Mt Compass Co-operative Store Ltd** bought out Jim Caddy's General Store (the business was originally started by Alex & Edna Dowell). This store sold the only groceries available at that time in Mt Compass, along with petrol and other rural essentials such as chaff. The Co-op's new Committee of Management sold £1 (\$2) shares in minimum blocks of 5, to raise the capital they required. The inaugural members of the Co-op's Committee of Management were E E Anderson (Chairman), Ray Stone (Secretary), Horrie Jacobs, Geoff Stone, Gil Smith, J C (Chris) Blakely and W W (Jim) Ellis.

A Manager was employed to oversee the running of the Store while also carrying out the role of Secretary for the Committee. The capital raised through shares was never really sufficient according to Ray Stone, with finance also arranged through the State Bank. Ray remarked later that it was due to the State Bank holding the new Co-op Store's accounts along with a number of the United Dairymen's accounts, that it was decided in 1948 to open a branch in Mt Compass – the first of which was located in the sleep-out on the front veranda of the Co-op's house.



In 1946, Erskine (Erk) Anderson (1899-1962) became the Inaugural Chairman of the Mt Compass Co-operative Store. He lived in the Mt Compass district from 1939 to 1951.

Continued on next page.....

2. Trading

(a) Set out hereunder is Comparative Trading Statement showing:-

<u>Period</u>	<u>Sales</u>	<u>Cost of Goods Sold</u>	<u>Gross Profit</u>	<u>% on Cost</u>
Years ended				
31st March, 1948	£25,574	21,768	3,806	17.5%
1949	30,926	28,401	2,525	8.9%
1950	23,185	19,397	3,788	19.5%
1951	21,680	18,001	3,679	20.4%
1952	23,035	19,678	3,357	17.1%
1953	19,796	16,729	3,067	18.3%
1954	19,449	16,173	3,276	20.3%

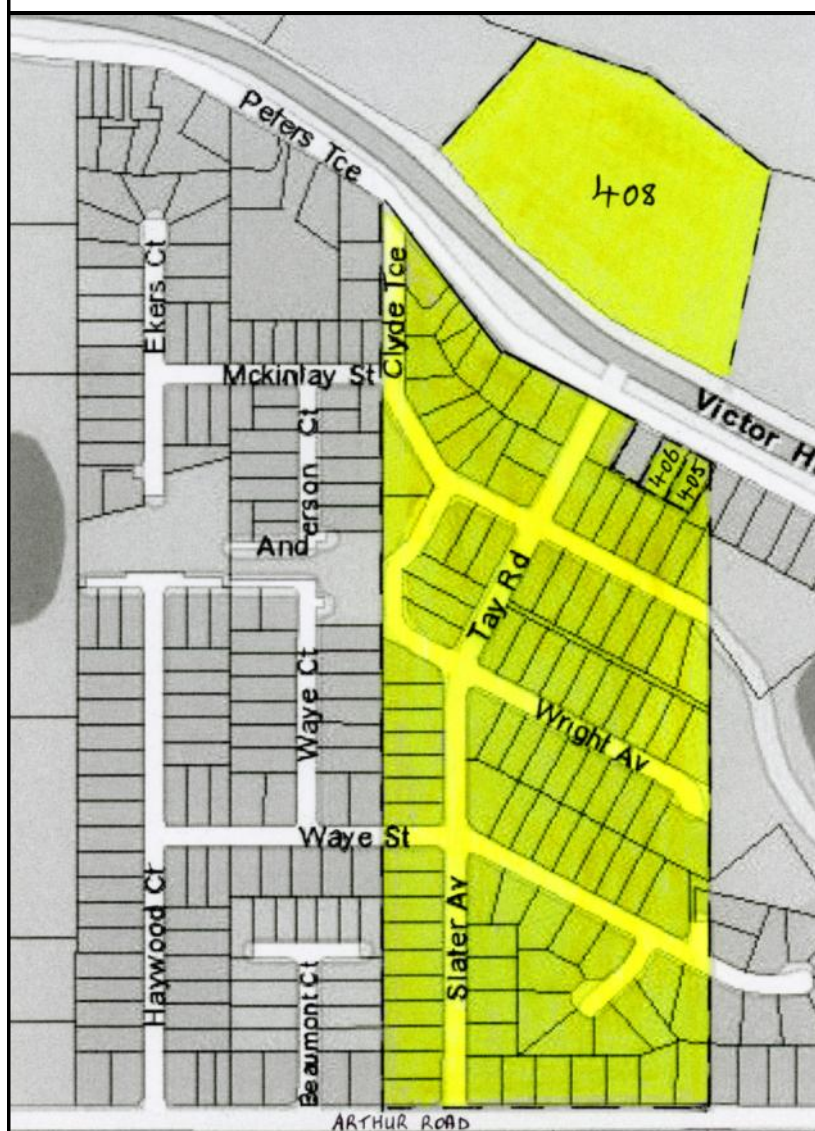
A comparison of the Co-op's trading figures as shown in their 1954 Auditor's Report. Income was also received from Agency commissions etc.

Continued from previous page

The first manager appointed to run the Co-op Store was Reg Kroemer from Strathalbyn. He was selected from about a dozen applicants and apparently brought with him a number of useful contacts and knowledge. The distribution rights for Shell petroleum products was obtained and the Co-op Store's buildings were enlarged. All went well for the first two years with staffing increasing to around 12 people and the business growing. However, when Mr Kroemer was forced to take three months off due to illness, the Store struggled and never quite replicated its successful initial years. This manager did return to work but his health failed again and Ray Stone marked this down as one of the primary reasons for the Store's ultimate failure. A number of subsequent Store Managers only remained for relatively short periods and were keen to move on to 'better' positions. The Auditor's Report from 1949 presents a sorry state of affairs, with the Store reporting the substantial loss of £609 (\$1,218) for that financial year. Owing to Mr Kroemer's absence, the Store's books were both "unsatisfactory and incomplete" with there being "a lack of trained book-keeping staff". There were also 75 non-members who had accounts with the store which created a tax problem. The Co-operative law required 90% of business to be conducted with the members of this Co-op (of which there were 292 by this time).

The Co-op's Landholding

The Co-op Store had purchased from Jim Caddy, all of Section 318 as well as land across the Victor Harbor road (Section 408). This provided them with access to water from the creek and included two previously subdivided blocks (Sections 405 & 406) - a total of 44 acres. Section 408 was sold to S G (George) Arthur in 1950 to help raise funds. The land on the western side of Victor Harbor Road remained, which was later to prove quite significant in the future development of this town. The history book "Where the Compass Leads you" Book 1 (pg 42) summarises quite clearly how this land was later sold to the Community Centre and went on to become pivotal in the growth of Mt Compass.



The above map shows the area of land (highlighted) owned by the Mount Compass Co-op Store. The area bounded by Peters Terrace and Arthur Road is Section 318. Sections 405 & 406 border Peters Terrace.

Continued on next page...

Continued from previous page

The Store

Audrey Griffith (nee Waye) spoke to the Archives in 2017 about her memories of this Co-op Store. She recalled working there for two years and described how the Store was laid out. As customers entered through the front door, the drapery section was on the right hand side with groceries on the left. The fruit & vegetable section was in the centre. Audrey spent much of her time in an office that was tucked away in the corner, although she did also help with sales. A flight of steps led down to the shop's storeroom.



This c1950s view from Mt Moon shows the Co-op Store's site on the corner of Peters Terrace and Tay Road. The Co-op house can be seen on the right with the large grain storage shed in the centre. All the sheds had to be demolished and removed (at a loss of £178) following the shop's relocation to the central retail area. The Co-op shop itself is unfortunately, hidden behind the pine tree in the front (right).

All sales were carefully recorded in each individual shareholder's book, of which there were hundreds. These were stored in pigeon holes near the door for easy access by customers. Any potential end of year rebates were reliant on purchases being recorded in these account books.

When this Store first opened, Audrey Griffith had the distinct recollection that they employed three returned servicemen – Keith Dix, Doug Johns & Ken Clifford. Carlene Farmer (nee Anderson) could also clearly recall the names of these three returned men in an interview she gave in 2017. (Her father Erk Anderson, was the first Chairman of the Co-op - amongst his many community involvements.) The strength of these two memories is a reasonable indicator of how much importance was placed at the time in offering work to men who had returned from the war.

Times are Changing

After the Co-op Store had been operating for a while, Beaumont's Bakery added a grocery line to their business which meant the Co-operative now had competition from within the town. Linton Jacobs recalled recently that bread deliveries had started to come into Mt Compass from Victor Harbor at this time which forced Snow Beaumont to fight back by expanding into groceries.

The Beaumont's business was sold as a General Store to Ken & Margaret Lewis in 1953 who then in 1958 sold it on to Aub Fryer. By all reports The Fryars were astute businesspeople which proved to be the final straw for the Co-op, forcing them in 1962, to sell their now loss-making business to Aub and Maureen Fryar. The Fryars then combined their two stores into the Co-op's retail premises (the current Liquor Store building).

Continued on next page...

Continued from previous page

The End Is Near

The new Co-op building had been opened only two years earlier (1960) in a last ditch attempt to increase sales by relocating into the town's main retail area. The fuel depot was also brought across with them. This new site had been previously owned by Southern Transport, a company operated by the McDonald family who, until they closed recently, were based in Willunga. A land swap was arranged with the McDonalds who in return, took over a block on the Co-op's old site.

The Co-operative's members took part in working bees to help lay the concrete slab and erect this new building. Pine trees cleared from the vacant site were then milled at Moana for use during construction. Any of the Co-op members who helped with this project received a credit to their shareholding account to the value of 80 cents for each hour of labour they provided. The records show that a 30 foot x 30 foot x 10 foot shed frame had been purchased to form this store's new building.

In the Archives there are also records showing the purchase of over 100 bags of cement for use in this building, which is an indicator of just how labour intensive construction work would have been in those days.

Continued on next page...

MIND YOUR OWN BUSINESS !!

May 1951.

Dear Member,

Further to the problem presented last month with regard to the reduction of real value of capital by rising prices, we would draw your attention to the effect of rising prices on profit and profit distribution.

At first glance it may appear a simple matter to conduct a business on a rising market, buying at a low price level and selling at a higher. It is in fact quite simple to make profits but the point which must be realised is that most of the extra money brought into the business as profit is swallowed up in the replacement of stock.

In order to comply with taxation requirements as a co-operative society it will be necessary to distribute our profit to members in one form or another.

Under present conditions to distribute in cash the profit appearing on our books would mean drastic reduction in stock with consequent shortage of many lines, customer dissatisfaction, and ultimate loss of business.

Your committee of management will make recommendations as to how the distribution may be made, but the actual decisions as to the distribution of profit as rebate on purchases and interest on capital are yours to be made at your Annual General Meeting to be held towards the end of June.

Within the next month you will each receive a copy of the society's balance sheet. This will of necessity only be an outline and we urge you all to attend your annual meeting to obtain a full report of the society's affairs and take your part in minding your own business.

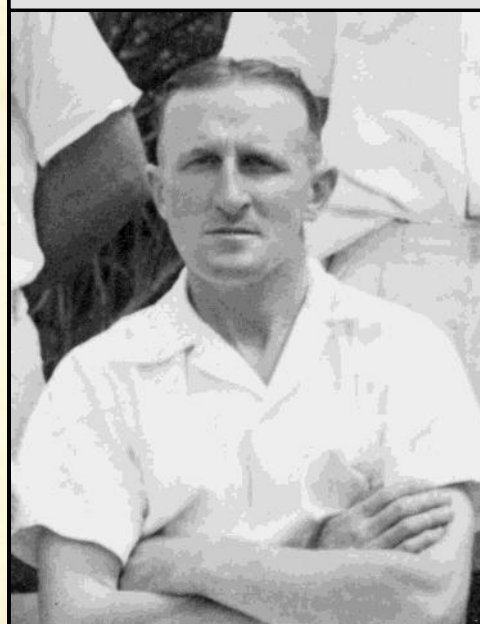
On behalf of the Committee of Management,
MOUNT COMPASS CO-OPERATIVE STORE LIMITED,
R. G. STONE, Chairman.

NOTE THESE SPECIALS

Boys' School Knickers sizes 10, 12, & 13	10/- pair.
Boys' ¾ grey golf socks sizes 7½" to 10"	from 6/8 pair.
Boys' Blue Shirts for School wear	8/9 each.
Boys' Pure Wool Golden Fleece Singlets size 24"	6/6 each.
" " " " " " size 26"	6/11 each.
Boys' Wool and Cotton Singlets size 30"	6/11 each.
Ladies' Pantettes silks and woollens	4/11 pair.
Ladies' Pantettes Rayon cotton and Wool	5/6 pair.
Ladies' House Shoes sizes 3 and 4	15/3 pair.
Boxed Linen Finish Stationary	4/11
Plastic Tablecloths	9/11
Dish Cloths	1/1
Face Washers	1/3
Bed Socks to clear	3/11 pair.
Cushion Covers	4/11
Mens O. S. grey flannels (seconds)	7/11.
Men's O. S. Woollen Pyjamas	33/9.



Above: G A (Gil) Smith one of the inaugural members of the Co-op's Management Committee. **Below:** Ken Clifford - an early employee at the Co-op Store (he was a returned serviceman who also played cricket for Mt Compass).



Left: A 1951 Co-op flyer sent to members

Continued from previous page

Among those listed as having helped in the slab pouring & shed erection work were: M J Turner, H W Hueppauff, C C Eldridge, R G Stone, A R Duncan, I K Arthur, L J Thomas, A E Lush, D H Tonkin, L A Stoeckel, Alb Jones, L F McHugh, C L Ekers, V Arthur, K H Peters, N Anderson, L Schulze & A C Blakely.

Despite becoming part of the Serv-Wel Co-operative Stores group, sales still continued to decline following the move. The large financial deficit in 1961-62 was the final straw – the decision was made to sell the business. Ray Stone spoke about Betty Jacobs the ‘girl’ who was working there at the time. Following the departure in 1961 of the last Store Manager Alan Channon (who he praised) Betty really became the de-facto manager, with Ray once again taking on the role of Secretary.

Moving On

The Post Office at this time was being run by Harry & Nora Humby, who were apparently also potential buyers along with the Fryars. De-

spite there being two possible purchasers of their store, the price finally received was, to quote Ray Stone, “not what we thought it would go for”. The remaining Co-op land was sold to the Community Centre as a final act of benevolence. They would very likely have received a better price if the Co-op had sold to a private buyer (one was making offers), but instead they chose to support the Community. It was suggested by Ray Stone that this £400 (\$800) land purchase by the Community Centre turned into a lucrative investment possibly one of up to \$100,000 in value as the land prices increased and future subdivisions occurred.



Humby's Store and Post office viewed in the mid 1960s - photograph supplied by their son, Ian Humby

In the end, Co-op members were to receive only 12 shillings in the pound (60 cents in the dollar) for their capital investment. It is clear that the Co-op's capital was never really sufficient to make a success of this venture, but it is a credit to those involved that they managed to persevere with this retail business for 16 years through the combination of a strong sense of purpose and community spirit.

To simply view the Common Cause and Co-operative Store supporters as being idealistic and naive would be to discount the tough times in which these ideals were formed. Many were simply hard working people who wanted a better life for themselves and their community. It was perhaps unfortunate that this district's population was not of a sufficient size to ensure the success of such a bold undertaking.

The impact on Mt Compass however, has been significant from these deeds and dreams. Our township would develop thanks to the Co-op Store's land sales and it can be argued that the War Memorial Hall and Community Centre Constitution have their roots in the Common Cause ideals. At the very least, the good judgement that allowed the Community Centre to purchase much of the closing Co-op's land, although risky at the time, did set up the strong financial base that has carried through to today.

Ray Stone was one of the founding fathers of the Co-op and it is thanks to his storing away of many records from this period, that we now have these valuable documents (albeit incomplete) in our Archives. His 1984 recorded interview also proved invaluable to this article. Further information was obtained from 2017 interviews with Carlene Farmer & Audrey Griffiths as well as the SAILIS website (Land Titles).

*Pages 131 & 132 of **Chasing Rainbows in the Rain** and pages 41-42, 100-102 of **Where the Compass Leads You** have further detailed information on the Mt Compass Co-op Store.*

Do you remember the days of fireworks? This is a flyer for fireworks available from Gordon Choon via the Co-op Store. He was a brother to the famous Gladys Sym Choon and it would seem, a rather interesting character himself.

<http://adelaidia.sa.gov.au/places/sym-choon-shops>

PRICES SLASHED AGAIN!

POST YOUR CHEQUES NOW FOR DISCOUNT OFFER

GORDON CHOON'S FIREWORKS ORDER SHEET

NOTE—PRICES TO COMPETE WITH CHAIN STORES
OUTSELL YOUR COMPETITORS
PLEASE POST ORDERS AT YOUR EARLIEST TO AVOID DELAY

SPECIAL OFFER

2½% Discount
OVER AND ABOVE
FOR CHEQUES RECEIVED
WITH ORDER
BEFORE 30th SEPTEMBER

237 RUNDLE STREET
ADELAIDE
REAR STORE

Phone

8 1141

BOX 41 P.O.

RUNDLE STREET
ADELAIDE

FANCY NOVELTY FIREWORKS — IMPORTED ENGLISH "STANDARD" BRAND — ANY LINE AVAILABLE SEPARATELY

Size No.	Retail Price	Wholesale Cost per dozen
1	2½d.	1/8
2	4d.	2/8
3	6d.	4/-
4	8d.	5/4
6	1/-	8/-
9	1/6	12/-
12	2/-	16/-
18	3/6	25/-
30	5/9 each	3/9 each
42	7/9 each	5/3 each

SPARKLERS

	Retail	Wholesale
6"	1d.	7/6 Grs.
11"	2d.	15/- "
18"	6d.	45/- "

CALL INTO OUR STORE
FOR THE LAST MINUTE TOP-UP!

CHINESE BUNGER AND CRACKERS — Prepacked for IMMEDIATE SERVICE — ANY LINE AVAILABLE SEPARATELY

3d. packet	Pohas Crackers	16/6
7d. Bundle of 10	Shising	1/5
2d.	Double Voice	1/1
2d.	Tom Thumbs	1/1
3 at 1d.	Worplings	11/6 Doz.
4d.	Flower Pots	2/8
1/-	Fountain No. 1	8/-
1/-	5 Bead Shooter	8/-
1/-	Revolving Wheels	8/-
1d. Large	Thunder Bombs	40/6's
½d. Medium	Thunder Bombs	40/8's
1½d. Bomb	Thunder Bombs	16/6
2d. Giant	Thunder Bombs	17/9
8d. Packet	Throw Downs—Large Pack	1 Dozen 5/4

ALSO THE SPECIALS AVAILABLE SEPARATELY (in addition to the above)—

Whistling Rockets 6d. each	Mines and Serpents	Flower Pots, No. 1 (large)
Devil and Taylor	4d. Flying Satellites	Bouquets of Candles
Vertical Wheel	Pohas 40's	Bengal Matches, Coloured
Motor Wheel	Flying Pigeons	
Triangle Wheel	Parcels of £10, £20, £30, £40, £50, £100, etc.	

SPECIAL—PARACHUTE FLARE BLASTER — SCREAMING AIR (SCREECHERS) SIRENS
CHAMPAGNE BOTTLES (party firework novelty) — shoots out coloured streamers indoors.

LARGE DISPLAYS—Catering for up to 1,000 people and private parties and charities, school committees and any money raising functions (similar to Rowley Park on smaller scale)

AERIAL DISPLAY SETS ● **GROUND, GARDEN DISPLAY SETS** ● **GENERAL DISPLAY SETS**
The above consists of Turbo Jets, Silver Lattice, Bouquets, Display Rockets, Batteries of Candles, Flash and Flood Lights, Vertical and Motor Wheels, Shrapnels, Tourbillions, Pyramids, Mortars and Explosive Sky Shells and Eruptions (Launching Pad supplied inclusive in display), Kaleidoscopes, Devil amongst Taylors. Directions for firing supplied.

THE ABOVE ARE SOLD IN SET PIECES ONLY. PRICES ON APPLICATION

A full assortment comprised of Rockets, Wheels, Jumping Jacks, Roman Candles, Golden Rains, Flying Imps, Silver Sprays, Pom Pom Cannons, Rainbows, Daisy Fountains, Shimmering Cascades, Crackerjacks, Mount Vesuvius, Golden Zodiacs, Snow Storms, Chrysanthemum Fountains, Coloured Fire, Jack-in-Box, Mines of Serpents, Star Shells, Aeroplanes, Crackers, Cannons, Black Devils, Flower Pots, Sparklers, Thunder Bombs, Plate and Line Wheels, Double Bangers, Smoke Bombs, Throw Downs, etc., etc., etc.

The greater portion of parcels are made up of the cheaper varieties, with a few larger lines to make up an assortment. Retail prices range from ½d. to 2/-. Larger sizes are available if required, and may be procured by ordering.

TERMS AND DISCOUNTS—

UNDER £25—NO DISCOUNT
OVER £25—2½% DISCOUNT Cash
OVER £100—5% DISCOUNT Cash
OTHERWISE NETT.

CASE LOTS BROKEN TO YOUR OWN ORDER
ABSOLUTELY NO RETURNS

CASH WITH ORDER ONLY, UNLESS TRADE REFERENCES ARE FORWARDED AND APPROVED.

NAME.....
ADDRESS.....

(i) Wind up the Society. In our opinion this course should be adopted only when all alternatives have failed.

(ii) Continue to operate the store with a smaller staff unless monthly Sales can be lifted to an average of at least £1900.

(iii) Lease the store to a person, or firm, prepared to purchase the stock and, perhaps, fittings; in which case the Society would cease to be a "Co-operative" within the meaning of the Income Tax Assessment Act.

(iv) Sell the Store but retain the land not required for the Store.

The options reported above are recommendations copied from the 1956 Co-op Auditor's Report - the writing was probably on the wall even then for their eventual demise.

MOUNT COMPASS Co-operative Store Ltd.

The Store where the Profits are returned to its Members.

Large stocks are carried of:

GROCERIES, HARDWARE,
DRAPERY, FRUIT, VEGETABLES,
NEWSPAPERS, SHELL MOTOR
FUEL and OILS, CHAFF, BRAN,
POLLARD, and SEEDS and
CEREALS.

Agents for:

Horwood Bagshaws, C.I.C. Insurance,
Newton McLaren Radios, Aladdin
Lamps, and Savings Bank.

By supporting this Store you are sup-
porting yourself and district.

Watch This Space Weekly.

THE STATE BANK OF SOUTH AUSTRALIA.

THE STATE BANK OF SOUTH
AUSTRALIA ANNOUNCES THAT
A BRANCH FOR THE CONDUCT
OF GENERAL BANKING BUSI-
NESS WAS OPENED AT **MOUNT
COMPASS** ON FEBRUARY 27.

Mt. Compass Co-op Store Ltd.

— 'Phone 2 —

ARE YOU A MEMBER?

Join the Store that gives—

Prompt Attention.

Keen Prices.

Friendly Service.

Bonus on Members' Purchases.

Let us know your requirements, so that
we may be of service to you.

Our lines cover all of your needs for
Home, Garden, Dairy, etc.

We are local agents for: Shell Co. of
Aust., Ltd., Co-operative Insurance
Coy., Horwood Bagshaw, Diabolo
Milkers and Bergrers' Paints.

A few of the Co-op Store Advertisements placed in
The Victor Harbor Times
(Note: DDT has been banned in Australia since 1987)



DUSTS or CONCENTRATE

give sure control of

RED LEGGED



EARTH MITES

Protect established pastures, crops and vege-
tables against the ravages of this pest. Get sure,
safe control now with reliable, proved AGSERV
D.D.T. Concentrate or Dusts.

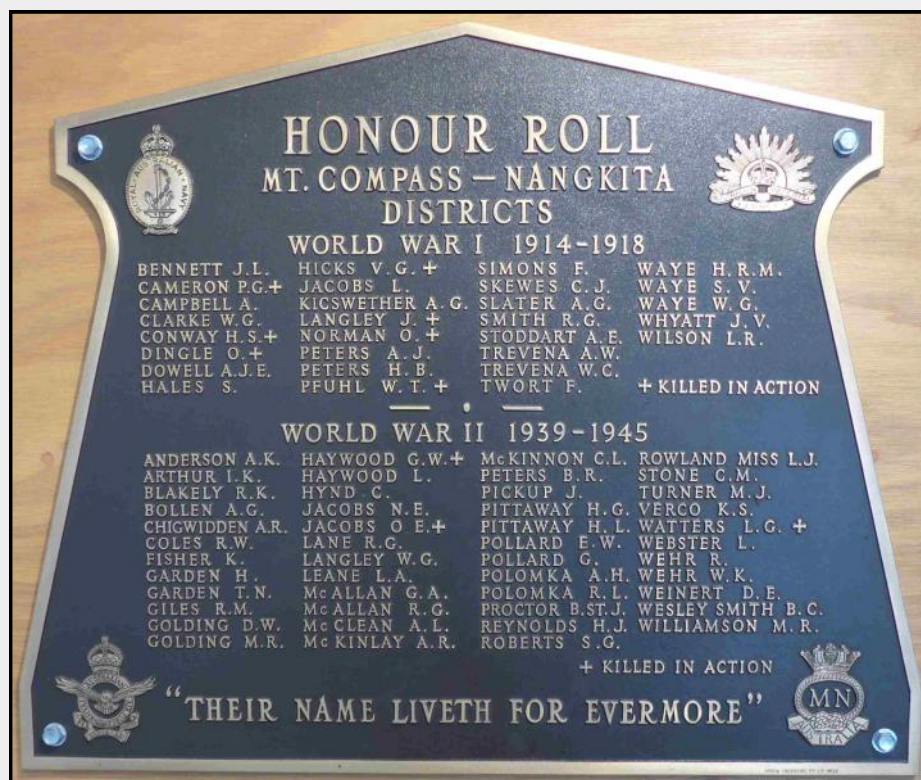
Full information and free literature avail-
able now at your local Agserv Agent.

J. B. KLEINIG & SONS, VICTOR HARBOUR.

NORMANVILLE SALES & SERVICE,
YANKALILLA.

MT. COMPASS CO-OP. STORE, MT. COMPASS.

The Mt Compass – Nangkita Districts Honour Roll



This Honour Roll plaque displayed in the Memorial Hall recognises all those who voluntarily enlisted from this district for service in both of the World Wars.

It was officially unveiled on the 21st of June 1959 by Senator E W Mattner. Edward (Ted) Mattner had served overseas himself in both World War I and World War II with the Australian Imperial Force (AIF). Mr C Thompson, the Legacy President was guest speaker on the day, with £20 being raised at this event on Legacy's behalf.

Newspaper reports on this unveiling note that the **Community Centre Choir** contributed

items to this unveiling which at that time was apparently known as a "PSA" (Pleasant Sunday Afternoon).

This Honour Roll took many of the names from the First World War photographic display of individual servicemen that now resides in the Archives. The Community Centre's Minutes do show that a completed list of names was displayed in *the two local shops* for members of the general public to check for any errors or omissions. Some of the original spelling mistakes were unfortunately still carried over. The new Memorial Wall in the Hall Foyer, overseen by David Thompson in 2016 has since corrected these errors.

The formal motion regarding the names, was passed by the Mount Compass War Memorial Community Centre Inc. on 31st April 1959 and reads: ***"That this committee is to accept the names of ex-servicemen and ex-servicewomen for inclusion in the District Honour Roll, providing that such persons voluntarily enlisted for service at home and abroad, and were attested for service with the Armed Forces, and qualified for the war medal, or any other member of the services who served in a theatre of war."***

Mr Keith Dix researched what the eligibility requirements for inclusion on such a roll were and which Badges of Service should be displayed. The four Services featured at the corners of the roll are: Royal Australian Navy, Australian Imperial Force (Army), Royal Australian Air Force and the Merchant Navy.

This cast-bronze Honour Roll plaque cost a total of £64-11-10 (\$129.19) including freight to Mt Compass from the manufacturers *Arrow Engraving* of Melbourne (we still have the original account). In the days when the Community Centre was in debt for the new hall (opened only 12 months earlier) this money had to be raised in some way. An advertisement for the Hall's Anniversary "Belle of the Ball" competition for that year shows the proceeds from this event would be directed towards the Honour Roll project. A Miss Barbara McKenzie of Mt Compass won this "Belle" competition, with the door takings reported as being £77.

By this time it seems that an earlier donation of £4-14-7 ½ (\$9.47) towards a future Honour Roll by the Knitting Circle, as they closed down in 1946 had been forgotten (refer following page). (*This knitting Circle was active during World War II to support any locals serving in the Armed Forces and will be the focus of a more detailed article in the future.*)

Any information you may have on those from this district who served in later conflicts will be gratefully received by the Archives.

Below: The World War II Knitting Circle's final minutes dedicating any remaining money "towards a Honor Roll or whatever memorial might be placed in the prop(osed) new Memorial Hall."

Minutes held. Oct 1946.

Minutes of previous meeting read & confirmed.

A number of letters of appreciation were read for work accomplished by circle throughout the war and for gifts of ink stands, were read

Mrs. M. H. Jacobs prop. that books be balanced and money to be handed to hall com to be set aside towards a Honor Roll or whatever memorial might be placed in the prop. new Memorial Hall.

Sec Mrs. H. Mc. Kinley.

A. L. Peters (Treasurer)

Below: The Mt Compass 'Sip n Save' Liquor Store photographed in 2014 with Sue Roberts, one of the owners. These premises were originally built by the Co-op Store's Committee and Members in 1959-60



A Condensed Timeline for the Mt Compass Co-operative Store Ltd

Compiled from the (incomplete) Mt Compass Archive collection of Audits and Reports

1946 - Rules for the new Mt Compass Co-op passed on 16th September 1946.

1947 - The 1st AGM financials reported they have 201 members.

- The Chairman was E E (Erk) Anderson.
- Geoff Stone loans the Co-operative £100 - which was repaid in 1960.

1948 - Membership now stands at 273.

1949 - The Co-op reports a loss of £609- (\$1,218) for the 1948-49 financial year.

- Auditor's report states accounting records are unsatisfactory, in part due to illness (& absence) of the Store Manager for months. Also mentioned in this report were incorrect mark-ups, missing items & poor stocktaking. Mr W R Reed appointed Manager - remains for the next 5 years.
- 292 members recorded.
- 5 acres of Land sold to SA Housing Trust for £100.
- New fuel depot installed + shed erected by staff & members at no cost.

1950 - Surplus (profit) of £824 reported with a membership of 290 and an 8% return on capital.

- Recorded that the Co-operative still owns Sections 405, 406 and part Section 318, comprising approximately 30 acres (reported as being 78 building blocks) with a value of £520.
- Chairman's Report states that 4 or 5 people have provided 1/3 of the capital and also that 90% of their business must be with the membership or they would be required to pay Company Tax.

1951 - Surplus of £673 reported with a total of 286 members.

- Ray G Stone is Chairman.

1952 - Surplus £669 (\$1,338) reported with 298 members. A total of 3981 £1 shares have been issued at this stage. 4% interest paid to members on their shareholding.

- Deliveries discontinued by the Store during this year with their van being sold.

1953 - Surplus of £644 (\$1,288) and interest rate of 5% paid on shareholder's capital.

- 293 members

1954 - Surplus reported as £648 (\$1,296) with 287 members. A rebate of 1/1 (11 cents) per £1 on purchases by members, along with a levy of 6d (5 cents) on shareholdings announced.

- 6 blocks of land sold for £328 & following new survey, Society reported as holding 90 blocks. This includes those being retained and those being offered for sale.

1955 - Loss (Deficit) of £252 reported for the year. Committee of Management members whose terms are expiring are: R W Sires, A E Lush and R G Stone. Secretary (+ Manager) is R W. Ritchie.

- Chairman is Ray G Stone.

1956 - Major loss of £1,845 (\$3,690) reported to the 278 members. No interest to be paid this year.

- Auditors report loss due to a number of factors including: over-valuing stock in previous year, losses on petrol dealings (possible "misappropriations") and stock write-downs.
- Amongst options suggested by the Auditors is the possible sale of Co-op business.
- G S Stone, G A Smith & A C Blakely are the Committee members whose term will expire.
- A M Channon is recorded as the current Secretary (+ Store Manager).
- Electricity installed to Co-op buildings during this financial year.

1957 - Surplus of £501 (\$1,002) recorded for this financial year (ends on 31st March each year).

- 282 Co-op members.

Co-op Timeline (cont)

1957 -(cont)

- R G Stone, L J Thomas & D A Cocks listed as Board members who have completed their two year Management Committee membership.
- 5 listed debtors owing a total of £104 written off as Bad Debts.
- Sales increased over this financial year and wages expenses reduced.

1958 - Loss of £106 reported as being due to discounting of old stock (membership still at 282).

- One large block sold for £247.

1959 - Loss of £432 recorded reportedly due to reduced sales & commission income.

- Membership now 285.
- Two blocks of land sold for £96.

1960 - Profit of £76 (\$152) despite further fall in sales and 289 members.

- Store prepares to move across to existing retail area (current Liquor Store site).
- Block of land exchanged with McDonald's Southern Transport for the new vacant site which is levelled & cleared by Co-op members.
- New premises (a large shed) erected by members who are paid for their labours with a credit to their Shareholder's capital accounts at the rate of 8/- (80 cents) per hour.

1961 - Committee members up for re-election this year are: A C Blakely, I K Arthur & L J Thomas

1962 - A Loss of £963 for the 292 members.

- Sheds on old Store site are dismantled at a loss and one more block of land sold (for £66).
- Reports show a £500 loan over two years from Miss Y J Blakely to the Co-op (possibly from 1961).
- Business sold on 5th June 1962 to A & M Fryar

1963 - 17th (and final) AGM reports a further loss of £199 for the financial year to 31/3/1963.

- R G Stone, C C Eldridge & A E Iush are mentioned as the Committee members up for re-election.
- Special General Meeting held on 17th June 1963 moves that the Company be wound up voluntarily and a liquidator appointed.

Websites of Interest:

<https://guides.slsa.sa.gov.au/c.php?g=410329&p=2795763> - A State Library site that allows you to view or download for free, any of the Sands & McDougall Directories printed between 1864 and 1973. These publications have a tremendous amount of information for both family and local history buffs. They are also fully searchable! Just type in any of your family surnames to find out where they lived in any given year.

https://pir.sa.gov.au/aghistory/land_settlement_in_sa/the_measure_of_land The Primary Industries & Regions SA (PIRSA) site detailing the interesting history of land development in SA & NT, including droughts & depression.

<https://archives.sa.gov.au/> The State Records of South Australia website. It has recently undergone a make-over which should make it even easier to view their online collection. You can also search the listing of their stored documents (a warehouse full). This includes many State Public Service records and early land registers.

The views & opinions reflected in this Journal do not represent the views of the Mt Compass War Memorial Community Centre Inc.

Every effort is made to ensure the accuracy of articles printed here. If you wish to advise of any corrections required or wish to add further information regarding any item, please contact me using the address below.

Most importantly: if you have any information, documents or photographs that that could be of interest to the Archives please give me a call or send an email.

Steve Kettle (mtcompassarchives@gmail.com)

For past Chronicle Newsletters visit the Archives website at: <http://mtcompassarchives.org/>