



32	Joseph Mitchell	do	1	
32	Walter Simpson	do	1	
35	Hugh Commons	do	1	
36	Thomas Teal	do	1	
37	Mrs. Lydia Spencer	Married		1
38	Harry E. Dowson	Farmhand	1	
39	William P. Waelin	do	1	
	Andrew do	do	1	
41	George T. Bridges	do	1	
42	Arthur Brown	do	1	
43	Frederick Renton	do	1	
44	William Lighthorn	do	1	
45	<del>Honey James Bacon</del>	<del>Labourer</del>	<del>1</del>	
46	James A. Wallin	Farmhand	1	
47	Leslie Svoetling	do	1	
48	James H. Haywood	do	1	
49	Mrs. Edith Wood	Married	1	
50	William Osborne	Farmhand	1	
51	John Williams	do	1	
52	William Bassett	do	1	
53	Charles Dickinson	do	1	
54	James L. M. Wincer	do	1	
55	Sidney Cavey	do	1	
56	Albert S. Ives	do	1	
57	Samuel Tricker	do	1	
58	John Newton	do	1	
59	Victor J. Veysey	do	1	
60	Walter C. Viney	do	1	
61	Thomas W. Ellis	do	1	
62	George Macdonald	do	1	
63	William R. Duguid	do	1	
64	James Simpson	do	1	
104	Richard P. Wearn	do	1	
105	Joseph H. Pither	do	1	
106	Alex Laing	do	1	
107	Joseph Traves	do	1	
	Carried Forward			

662763 266 of 390 1 1 2 1 2 1 1 677767

Name: Thomas W Ellis

Gender: Male

Departure Date: 28 Feb 1912

Departure Port: England

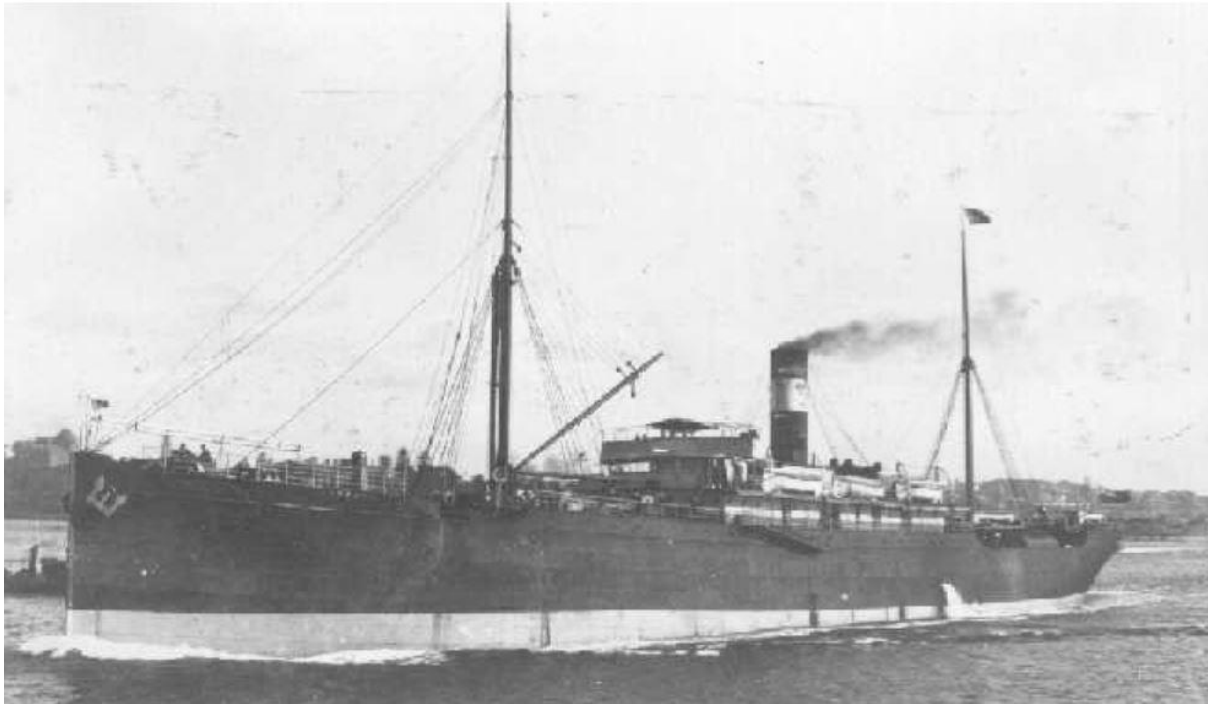
Ship Name: Narrung

Shipping Line: P & O Branch Service

Search Ship Database: [Search for the Narrung in the 'Passenger Ships and Images' database](#)

Destination Port: Sydney, Australia

Master: R Bidwell



SS Narrung

The SS Narrung, stopped in Adelaide on 14 April 1912 then Melbourne later in April. Thomas had booked to travel to Sydney but cannot locate the Narrung's arrival in Sydney.

Thomas is believed to leave the ship at Melbourne and work his way to Sydney, NSW doing odd jobs along the way.

Thomas applied for a job at Gladesville Mental Hospital in Sydney as a trainee attendant (trainee nurse) on 28 December 1912, being appointed on 1 January 1913

Thomas was then appointed a Junior Attendant on 1 January 1914 and Senior Attendant on 1 January 1918 (while he was serving in the army on the Western Front in Europe)

Thomas met his future wife Florence Mildred Thomas at the hospital who was working as a volunteer doing domestic work at the time.

### **World War 1 Army Service**

Thomas Ellis enlisted in the Australian Imperial Forces on 5 July 1915 as a private, serial number 8063 (National Archives of Australia: B2455).

Thomas's entire army service (1915 to 1919) was in two units of the medical corps:

- 2<sup>nd</sup> Australian General Hospital Unit – 14 October 1915 to 8 April 1917
- 7<sup>th</sup> Australian Field Ambulance Unit – 9 April 1917 to his discharge in from the army

20/4/17

Entitled to 1914/15 Star *Thomas Ellis*

Statement of Service of No. *8063* Name *Thomas Ellis*

Unit in which served.	Promotions, Reductions, Casualties, &c.	Period of service in each rank.		Remarks.
		From	To	
	<i>Emb. from Aust. 1915</i>			<i>2nd MD</i>
	<i>Detached from 2nd A.G.H. &amp; proceeded to Boulogne for duty. Marseilles</i>	<i>14.6.16</i>		<i>Pt II 5 543.6.7.16.</i>
<i>1st A.G.H.</i>	<i>Re. J.O.S. &amp; 2nd A.G.H. from 2nd A.G.H.</i>	<i>France</i>	<i>10.4.17</i>	<i>Pt II 12/399 26.4.17 Transf. 80.14/119 1917</i>
	<i>Taid with Unit.</i>	<i>Grand</i>	<i>2.5.18</i>	<i>O. &amp; A. 10.</i>
<i>1st A.G.H.</i>	<i>Re M.O. for R.C.F.A.</i>	<i>Lowant</i>	<i>8.11.19</i>	<i>8007/1259 6.9.17 B.113145</i>
	<i>Re Embarked for Australia per bastaha Hussing Staff</i>	<i>Eng.</i>	<i>13.11.19</i>	<i>888690- 22.4.19 6.11.16.3 A.136639</i>

Thomas Ellis enlisted in the Australian Imperial Forces on 5 July 1915 being appointed as a private in the 2<sup>nd</sup> Australian General Hospital Unit on 14 October 2015, serial number 8063 (National Archives of Australia: B2455).

**A**

136839

Hospital  
Gladesville  
Sydney  
RALIAN



MILITARY FORCES.

Special Reinforcements  
Rear rank 9th of 13  
Hospital of 1st  
7th H.A. Bn.

# AUSTRALIAN IMPERIAL FORCE.

## Attestation Paper of Persons Enlisted for Service Abroad.

No. 8069 Name ELLIS T.W.  
Unit Special Reinforcements Hospital of 1st  
Joined on 5/7/15

Special  
Reinforcements  
No. 2, A.G.H. (A.M.E.)

### Questions to be put to the Person Enlisting before Attestation.

1. What is your Name? ... Thomas William Ellis
2. In the Parish of Hawkehead in or near the Town of Hawkehead in the County of Westmorland England
3. Are you a natural born British Subject or a Naturalised British Subject? (N.B.—If the latter, papers to be shown.) ... Natural Born
4. What is your age? ... 28 years
5. What is your trade or calling? ... Hospital Attendant
6. Are you, or have you been, an Apprentice? If so, where, to whom, and for what period? ... No
7. Are you married? ... No
8. Who is your next of kin? (Address to be stated) ... Mother, Mrs. Ellen Lupton, Wyborwath, Westmorland, England
9. Have you ever been convicted by the Civil Power? ... No
10. Have you ever been discharged from any part of His Majesty's Forces, with Ignominy, or as Insubordinate and Worthless, or on account of Conviction of Felony, or of a Sentence of Penal Servitude, or have you been dismissed with Disgrace from the Navy? ... No
11. Do you now belong to, or have you ever served in, His Majesty's Army, the Marines, the Militia, the Militia Reserve, the Territorial Forces, Royal Navy, or Colonial Forces? If so, state which, and if not now serving, state cause of discharge ... No
12. Have you stated the whole, if any, of your previous service? ... Yes
13. Have you ever been rejected as unfit for His Majesty's Service? If so, on what grounds? ... No
14. Do you understand that no Separation Allowance will be issued in respect of your service beyond an amount which together with Pay would reach eight shillings per day? ... Yes
15. Are you prepared to undergo inoculation against smallpox and enteric fever? ... Yes

I, Thomas William Ellis do solemnly declare that the above answers made by me to the above questions are true, and I am willing and hereby voluntarily agree to serve in the Military Forces of the Commonwealth of Australia within or beyond the limits of the Commonwealth.

And I further agree to allot not less than two-fifths of the pay payable to me from time to time during my service for the support of my wife three-fifths wife and children

Date 17 July 1915

Thomas W. Ellis  
Signature of person enlisted.

\* This clause to be amended where necessary and should be struck out in the case of unmarried men or widowers without children under 18 years of age.

CERTIFICATE OF ATTESTING OFFICER

The foregoing questions were read to the person enlisted in my presence.  
I have taken care that he understands each question, and that his answer to each question has been duly entered or replied to by him.  
I have examined his identification papers, and am of opinion that they are correct.  
(This to be struck out except in the case of persons who are naturalized British Subjects.)

Date 17 July 1915

*Eric A. Scott*  
Signature of Attesting Officer.

OATH TO BE TAKEN BY PERSON BEING ENLISTED\*

I, Thomas William Ellis, swear that I will well and truly serve our Sovereign Lord the King in the Australian Imperial Force from 17 July 1915 until the end of the War, and a further period of four months thereafter when ever lawfully discharged, dismissed, or removed therefrom; and that I will resist His Majesty's enemies and cause His Majesty's peace to be kept and maintained; and that I will in all matters appertaining to my service, faithfully discharge my duty according to law.

SO HELP ME GOD.

*Thomas W. Ellis*  
Signature of Person Enlisted.

Taken and subscribed at Leeton, N.S.W. in the State of New South Wales this 17 day of July 1915, before me—

*Eric A. Scott*  
Signature of Attesting Officer.

\*A person enlisting who objects to taking an oath may make an affirmation in accordance with the Third Schedule of the Act, and the above form must be amended accordingly. All amendments must be initialed by the Attesting Officer.

Description of Thomas William Ellis (No) on Statement

Age 25 years 10 months  
Height 5 feet 7 3/4 inches  
Weight 112 lbs.  
Chest Measurement 36 x 40 inches  
Complexion Dark  
Eyes Blue  
Hair Black  
Religious Denomination Catholic

DISTINCTIVE MARKS

CERTIFICATE OF MEDICAL EXAMINATION.

I have examined the above-named person, and find that he does not present any of the following conditions, viz. —

Scrophula; phthisis; syphilis; impaired constitution; defective intelligence; defects of vision, voice, or hearing; hernia; hemorrhoids; varicose veins, beyond a limited extent; marked varicose with unusually prominent testicle; inveterate cutaneous disease; chronic ulcers; traces of corporal punishment, or evidence of having been marked with the烙烙 D. or B.C.; contracted or deformed chest; abnormal curvature of spine; or any other disease or physical defect calculated to unfit him for the duties of a soldier.

He can see the required distance with either eye; his heart and lungs are healthy; he has the free use of his joints and limbs; and he declares he is not subject to fits of any description.

I consider him fit for active service.

Date 5 July 1915  
Place Sydney

Signature of Examining Medical Officer  
Capt. A. M. M.

CERTIFICATE OF COMMANDING OFFICER.

I CERTIFY that this Attestation of the above-named person is correct, and that the required forms have been complied with. I accordingly approve, and appoint him to .....

Spec. Regt. 1st R. Aust. Inf. Battalion A.I.F.  
Date 12th Oct. 1915  
Place Liverpool  
Commanding Officer Capt. A.A.M.C.



Thomas William Ellis – sn: 8063. (Photo from Sidney Riley Studios – Western Road, Rozelle)





Thomas William Ellis – sn: 8063. (Photo from Sidney Riley Studios – Western Road, Rozelle)

### **Embarkation**

Thomas Ellis left Australia on 14 October 1915 from Sydney on the HMAT Port Lincoln (ship government reference A17) stopping at Melbourne, Victoria



**HMAT A17 Port Lincoln**



Port Lincoln in the Port of Melbourne

Thomas Ellis was appointed Acting Sergeant from 24 October 1915 (until his arrival in Egypt on 17 November 1915, reverting to private on joining his unit)



Port Lincoln in Egypt November 2015

The epic four-week voyage across the Indian Ocean to Egypt has been described as “the longest journey to war in the history of the world”.

On-board, Officers organised rigorous training drills and exercise sessions for the men. They were expected to do their own washing, sweep the decks and carry out other chores. Three hearty meals a day were served; breakfast usually consisted of porridge, stew and tea. Lunch included soup, meat, vegetables and pudding. Meat, bread with jam and tea was served for dinner.

Many of the troops experienced bouts of seasickness on the voyage. To alleviate boredom, sports carnivals were held with boxing matches, pillow fights and wheelbarrow races. The crossing the Equator ceremony, ‘Neptune’s Journey,’ was played-out on each troopship.

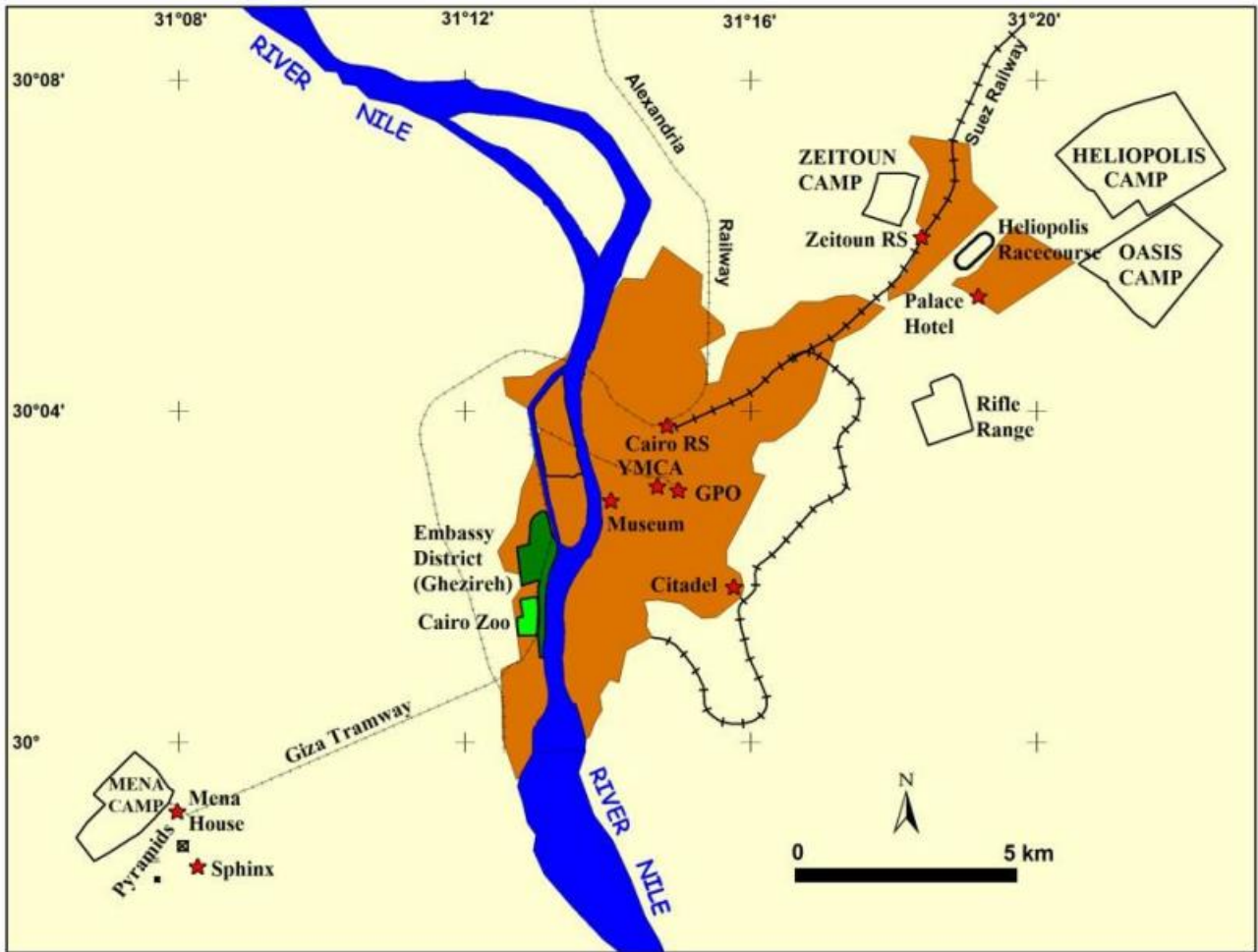
## **2<sup>nd</sup> Australian General Hospital Unit**

The 2<sup>nd</sup> Australian General Hospital Unit's main body of staff previously departed Australia aboard [HMAT \(A55\) Kyarra](#) on 28 Nov 1914, being deployed at Mena House outside Cairo in Egypt

The No. 2 Australian General Hospital and No. 2 Australian Stationary Hospital served the 1st Australian Division camp at Mena.

On 25th January 1915, 2nd AGH took over Mena House, with 35 hospital marquees for general and seven for isolation cases pitched in the vicinity.

In May, additional beds were set up at Ghezireh Palace Hotel while Mena House was retained as an auxiliary. The total staff at this time was 14 officers, 51 nurses and 133 others.



**Map 1. AIF camps around Cairo, 1915**

*Map compiled by D G Jones*



AUSTRALIAN WAR MEMORIAL

P11456.002

2nd Australian General Hospital - Mena camp near Pyramids



Mena House with Hospital Patients, 1915

Mena was always a desirable location as there was a tram line into Cairo.

Catching the last tram from Cairo to Mena camp was always precarious for everyone. If the men did not get back to the camp before their leave ran out, which was usually midnight, they were “crimed” for AWL (absent without leave) which cost the unlucky man usually a couple days' pay.

The tramways were not designed to carry such volumes of men and two things happened. To cope with the sheer volume, men were compelled to sit on the roof of the carriage. The bemused Egyptian pedestrians are looking at the progress of this tram.

Less entertaining was the desire of tram conductors to check every ticket regardless of the time it took to perform or the crowded state of the trams.

This caused great tension between both the tram conductor and the men. This officious behaviour often cost a tram load of men to be “crimed” for AWL purely because of the conductors' behaviour. There were many cases occurring of angry Australian soldiers taking out their frustrations on particularly officious and lugubrious conductors.

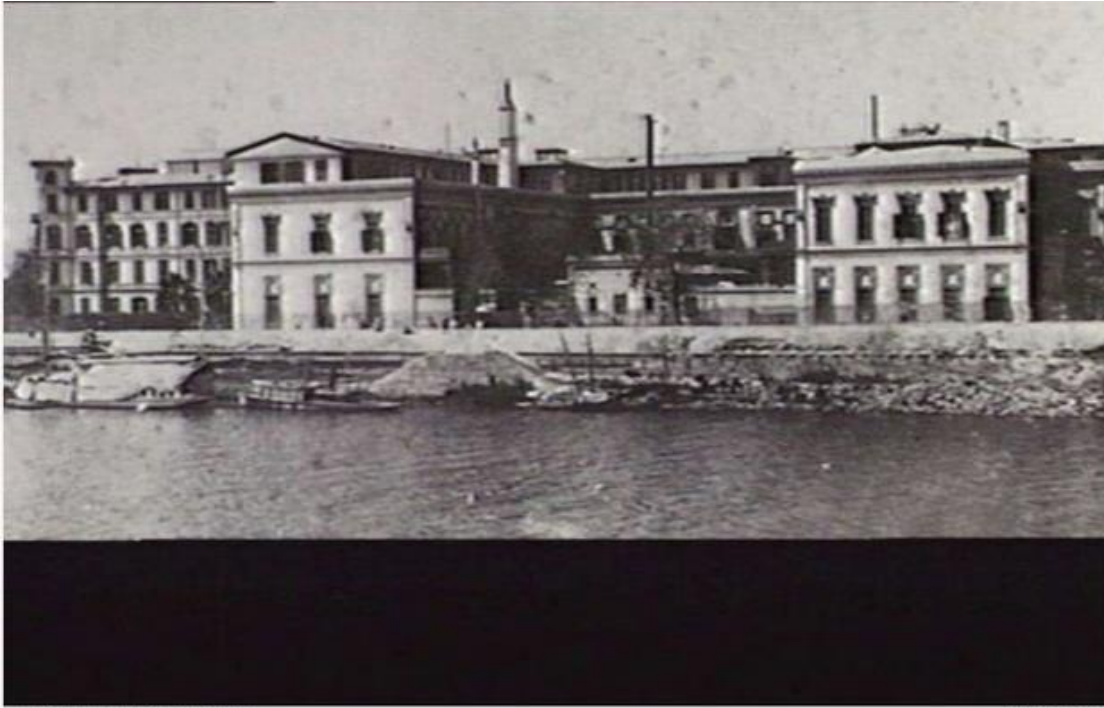
Many complaints were lodged at Mena Camp Headquarters by conductors who were assaulted for carrying out their duties.

On other occasions, conductors were assaulted and tossed off the trams if it was felt that the behaviour would result in the tram arriving late to Mena.



**Men crowded on the roof tops of the tram.**

Later in 1915, due to the casualties from Gallipoli, it was necessary for the preparation of a second hospital at Ghezireh Palace Hotel.



AUSTRALIAN WAR MEMORIAL

P001 56.002

Ghezirah annex of 2nd AGH

Combined the two hospitals had a total of 1500 beds.

In March 1916 both hospitals were ordered to close and to follow 1 ANZAC Corps and the 2nd Division into France.

### **Evacuation of Injured from Gallipoli**

Injured soldiers were evacuated from a number of hospitals over the campaign

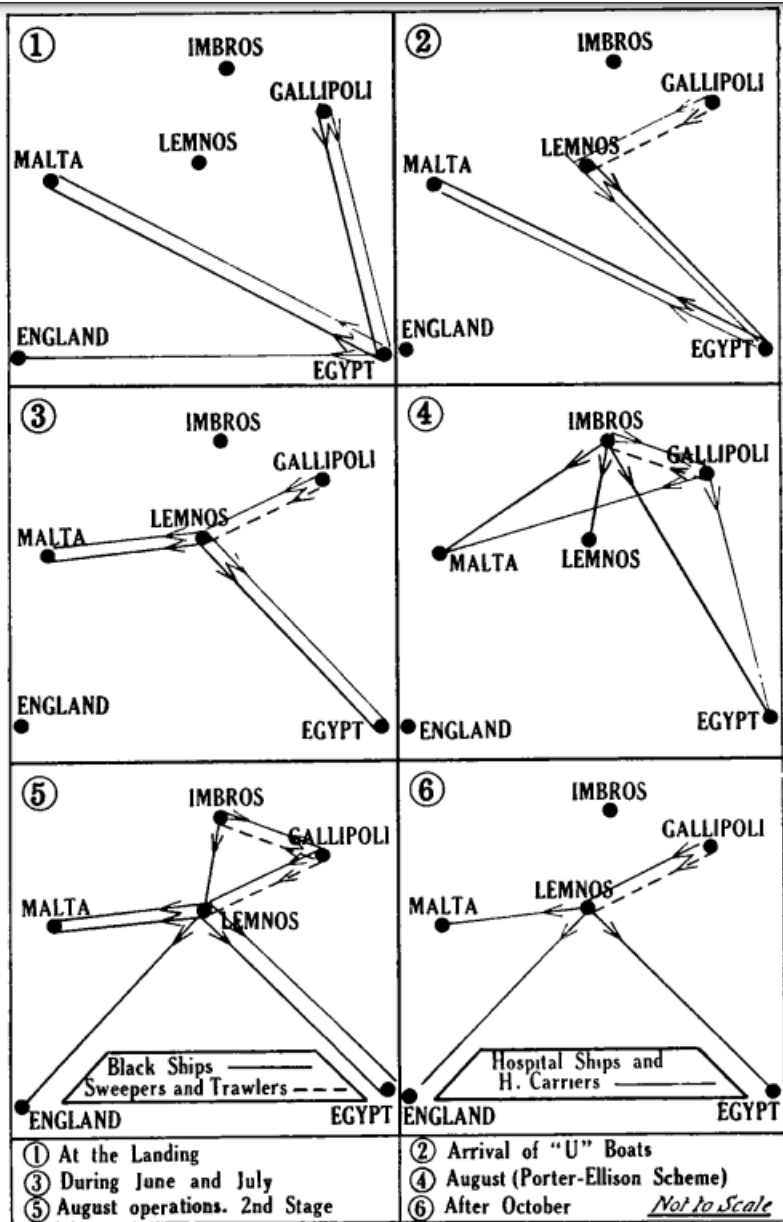


DIAGRAM ILLUSTRATING DEVELOPMENTS IN THE PROBLEM OF SEA-TRANSPORT OF SICK AND WOUNDED DURING THE GALLIPOLI CAMPAIGN



## **Final Evacuation from Gallipoli**

Gallipoli was finally evacuated between 15<sup>th</sup> December 2015 finishing 20<sup>th</sup> December 2015

Thomas Ellis stated that he went to Gallipoli and detailed evacuations undertaken from the beach.

We can only presume Thomas assisted with the Gallipoli evacuation due to his medical training and was later recorded as serving on the Hospital Ship Braemar Castle.

However, it is not detailed on his war records as his overseas service is not recorded before 25 March 2016 when he departed Egypt of the Hospital Ship Braemar Castle (which is obviously after the December 2015 evacuation of Gallipoli).

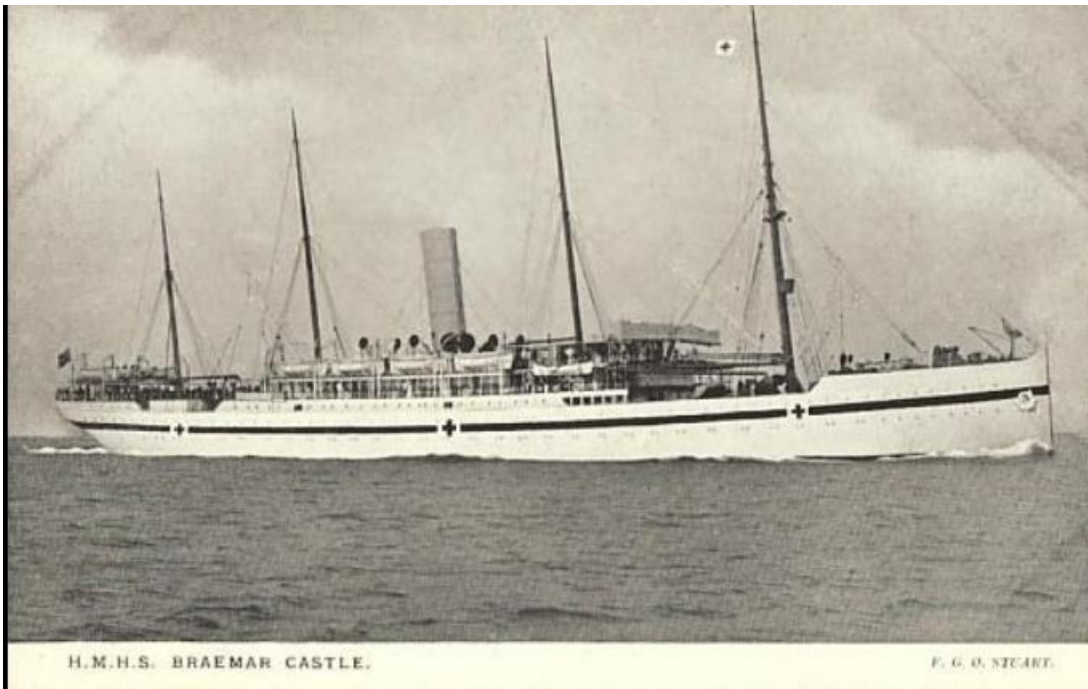
However, as Thomas arrived in Egypt on 17 November 1915 and he was subsequently on the Hospital Ship Braemar Castle, we can only presume he was involved in the evacuation of Gallipoli.

The evacuated troops from Gallipoli were transferred to via Lemnos to Egypt between 21-31 December 2015

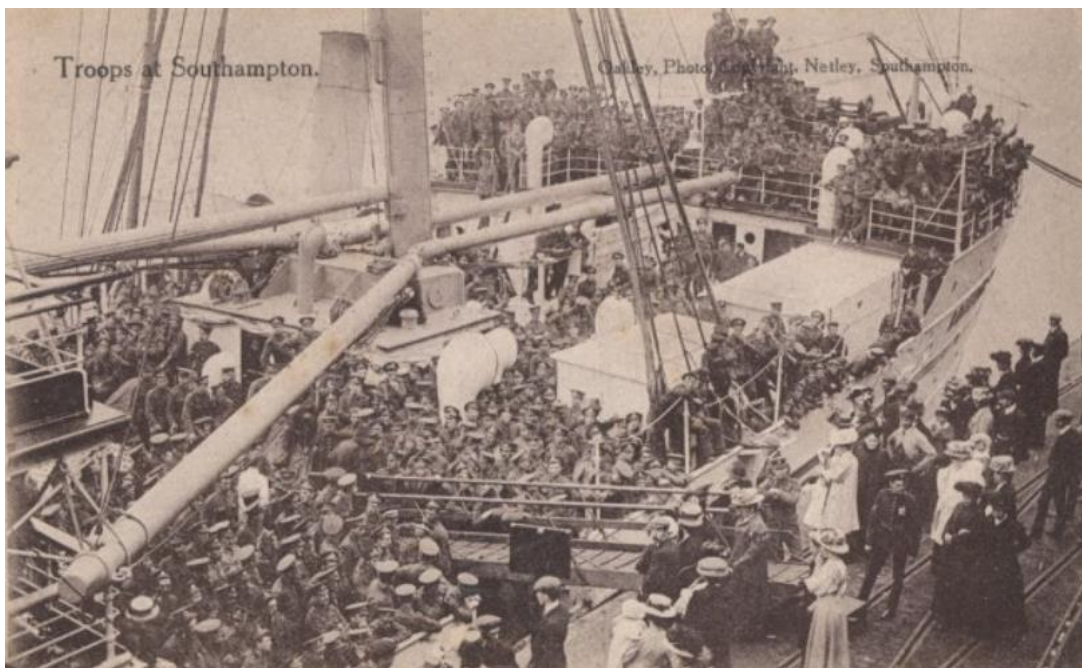
## **France & the Western Front**

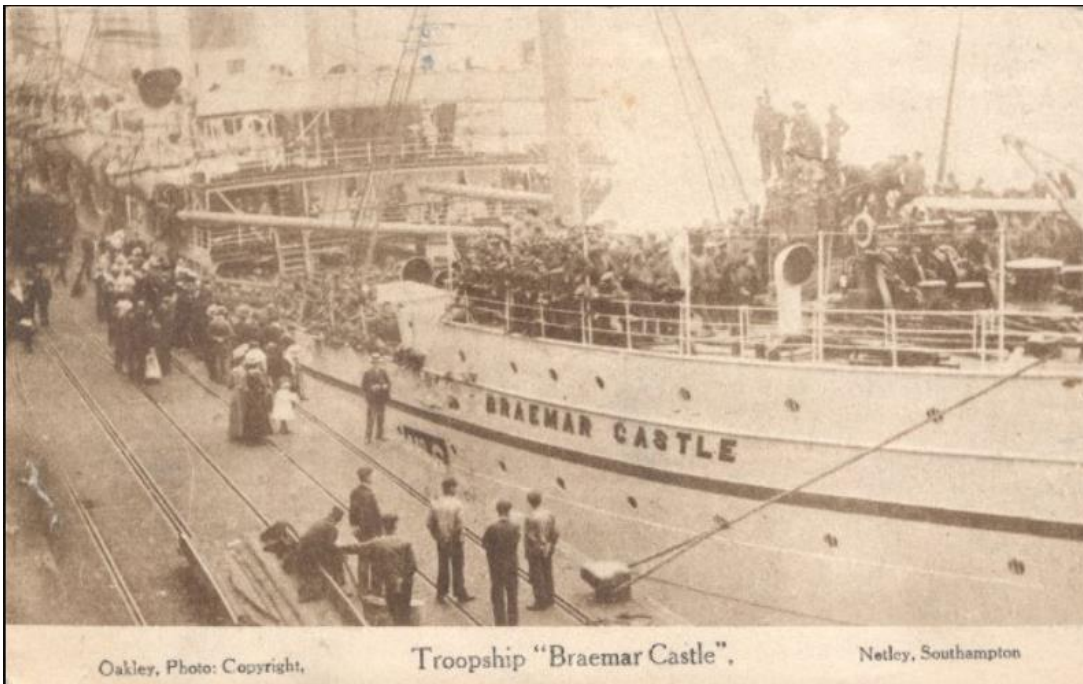
The 2<sup>nd</sup> Australian General Hospital unit was ordered to close down operations in Egypt and move to France Thomas transiting to Alexandria in March 1916

Thomas left Alexandria, Egypt to join the British Expeditionary Forces on 25 March 1916 on the hospital ship the HMHS Braemar Castle, sailing to Marseilles, France - disembarking on 4 April 1916.



The HMAS Braemar Castle was originally used as a troop transport ship to Gallipoli in 1915 being converted to a well fitted out hospital ship of 421 beds during 1915, staffed by Australian & New Zealand medical staff.





After arriving in Marseilles Thomas's unit had to undertake a brief period of isolation at Mousot, near Marseilles (screening for infectious cases from Egypt)

The unit then established itself at Wimereux, France (near Boulogne), arriving on 30 Jun 1916, the eve of the advance on the Somme.

While the number of dead and injured at Gallipoli had been appalling (Australian losses were over 8,000), the Somme was a slaughterhouse. On the first day of the Somme offensive 60,000 British troops fell, a number equal to the total Australian losses for the war. In the first few days of its first action on the Somme (23-27 July 1916)

The 1<sup>st</sup> Division AIF, at Pozieres, suffered 5,000 casualties and was replaced by the 2nd Division AIF, which suffered 3,500 casualties in a few days.

By 3 September 1916, when the Australians were replaced by Canadians, the Anzac Corps had lost 23,000 men in the space of 6 weeks.

The AIF divisions still had nearly two years of fighting in France ahead of them.



AUSTRALIAN WAR MEMORIAL

P11626.010

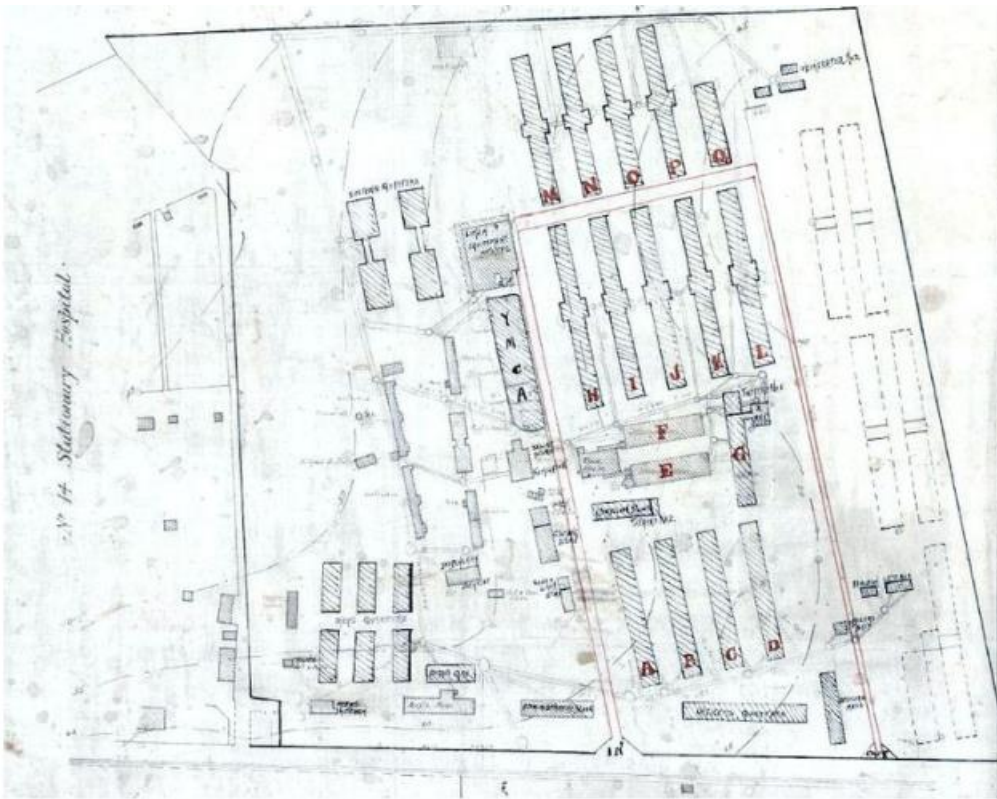
2<sup>nd</sup> AGH Wimereux



Ward at Wimereux



Tent lines during 1916-17 winter



Plan of 2AGH Wimereux

Thomas's unit was deployed in various conflicts through Europe, many being the most horrific battles of the war.

The battles he attended in the 2<sup>nd</sup> AGH were:

2<sup>nd</sup> Australian General Hospital Unit – 14 October 1915 to 8 April 1917

- In April 1916 - Boulogne, France – treating casualties from the Somme
- April 1916 - the unit was at Fort Rompu, near Erquinghem, west of Armentieres.
- In August 1916 they were in Vadencourt - treating the injured from Pozieres and Mouquet Farm battles.

### **7<sup>th</sup> Australian Field Ambulance Unit**

On 8 April 1917, Thomas was transferred to the 7<sup>th</sup> Australian Field Ambulance Unit

Thomas's new unit continued to be deployed in some of the most horrific battles of the war.

The battles he attended in the 7<sup>th</sup> Field Ambulance Unit – from 9 April 1917 (until his discharge)

- April 1917 - Somme
- In Dec 1917 the unit was at Pont d'Achelles - which had been the collection point for casualties from the battle of Messines in July of that year.
- In March 1918 it was at Westhof Farm in Belgium

- In May 1918 they were on the Somme and remained there supporting the advance by the Australian Infantry.

Thomas Ellis was gassed when on the Western Front and evacuated to Belgium to recover.



Thomas Ellis (Far right) and fellow soldier convalescing with family in Belgium





Thomas Ellis sn. 8063 (under X in photo) – Picture of last camp with 7<sup>th</sup> Field Ambulance Unit (believed taken in France)

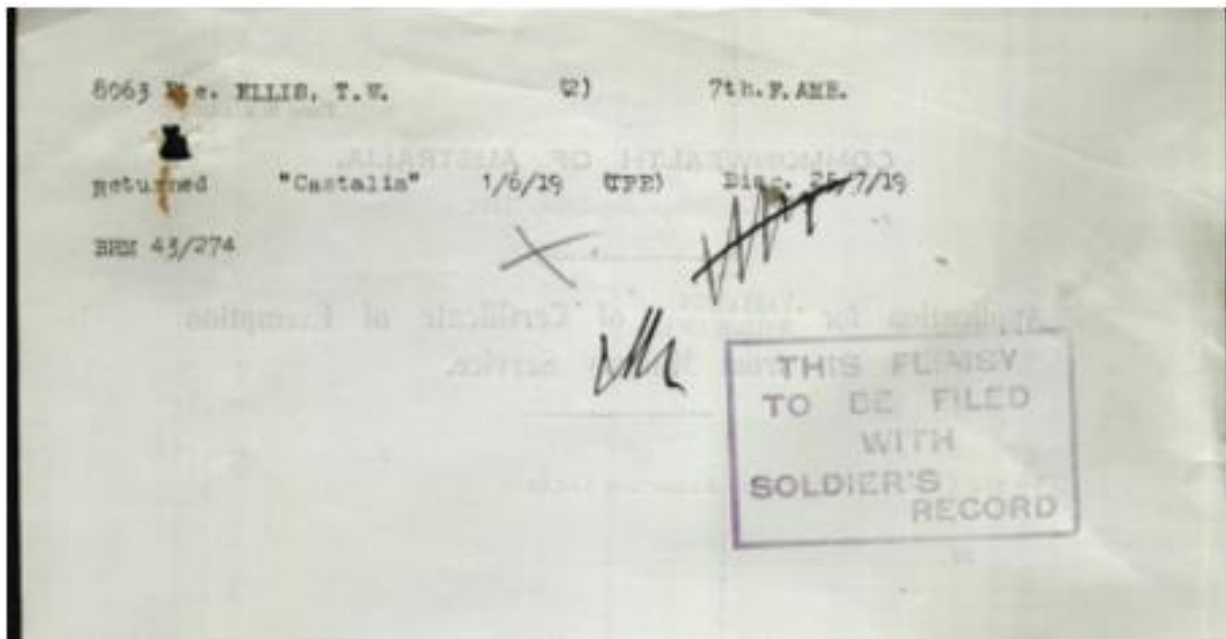
On 26 February 1919 Thomas was transferred to England.

This was the first time he returned to England since he emigrated in 1912, apart from brief leave breaks during the war.



Description on Photo – Sergeant Ellis (photo L Ed Dupont Estaires)

Thomas returned to Australia on 13 April 1919, on the ship SS Castalia.



S.S. "CASTALIA" ANCHOR LINE INDIAN SERVICE

The SS Castalia was a passenger liner that previously transited between Bombay and Glasgow. During WW1 the government commandeered the ship for troop movements

Thomas was discharged from the army on 25 July 1919 when his unit was demobilised.

Transferred to  
**AUSTRALIAN IMPERIAL FORCE.**

No. 8063

Rank Pte Name ELLIS, T. W

Unit 4th Field Amb

Casualty Wounded in action at Gallipoli - transferred to 4th Field Amb - London 17/1/19 Went to Nursing Staff

Returned to Australia per Australia 1/6/19

**1914/15 STAR**  
No. 2243

**BRITISH WAR MEDAL**  
No. 2099

**VICTORY MEDAL**  
No. 30711

DATE 25.7.19 PURPOSE Discharged

WAR HISTORY INDEX

1914/15 Star Issued D.L.M. A. No. 6. 229

Enlisted to 1914/15 Name Ellis, T. W

Statement of Service of No. 8063

Unit in which served.	Progression, Reductions, Casualties, etc.	Period of service in each case.		Remarks.
		From	To	
	Detached from 2nd A.S.H. & proceeded to Boulogne for duty, Marseilles	14.6.16		P.S. 5 243 6 7 16
4th Field Amb.	Went to 4th Field Amb. from 2nd A.S.H.	France	10.4.17	Transferred to 4th Field Amb. 10/4/17
4th Field Amb.	Taid unit	France	3.5.18	C. 47 10.
4th Field Amb.	Went to 4th Field Amb. from 2nd A.S.H.	France	8.11.17	Transferred to 4th Field Amb. 8/11/17
	Embarked for Australia 2-9	13.11.17	30/1/19	22/1/19

Discharged 25.7.19

I have examined the above details and find them correct in every respect.

Thomas received the following medals for his service during the war:

- 1914-15 Star
- The British Service Medal
- Victory Medal



The 1914-1915 Star



The British War Medal 1914-1920



The Victory Medal



## After WW1

Thomas returned to work at Gladesville Hospital, Sydney, NSW as a Senior Attendant (Senior Nurse) marrying Florence Mildred Thomas on 12 July 1919.

## Services to Health Services

In October 1925, Thomas was transferred to the newly to be opened Bloomfield Hospital in Orange, NSW (Bloomfield Hospital opened in November 1925) where he was appointed a Charge Attendant (In Charge Nurse)



Official Opening Bloomfield Hospital 1926

Thomas, was later appointed a Supervising Attendant (Supervisory Nurse) in January 1937

Thomas was Acting Chief Attendant (In charge of all male nursing) at Bloomfield Hospital Orange in 1947

On 6 September 1948, Thomas's appointment as Chief Attendant, Division of Mental Hygiene, Department of Health (Head of Male Nursing at the hospital reporting to the Medical Superintendent) - being published in the Government Gazette 10 September 1948.

Thomas and his family moved into the Chief Attendant's residence at the hospital on 24 September 1948 due to the staff shortages caused by World War 2



Honour Board Bloomfield Hospital, Orange New South Wales

On 15 October 1950, His Excellency the Governor of New South Wales approved Thomas's retirement from the Public Service in terms of Section 66(3) of the Public Service Act, 1902 (i.e., Reaching the mandatory retirement age with accumulated untaken leave)

### **Bloomfield Hospital**

*The hospital was located on 640 acres, being virtually self-sufficient with carpenters, shoemakers, cooks, gardeners, painters and even a piggery. By 1932 there were 1,100 patients and 195 staff with 23 ward buildings with some 29 buildings for associated services, administration and staff accommodation*

*The hospital primarily treated patients with mental disorders. Above all, the location of the hospital in a vast estate with beautiful spacious grounds and gardens, providing a serene environment for patients to start their journey to recovery.*

*Recreational and occupational therapy were developed as important forms of treatment at Bloomfield from 1929 and the value of sporting activity was recognised from early on.*

*The first cricket pitch was established near the most northern entrance to the site. During the 1930s this pitch and adjoining area (39 hectares (96 acres) in total) was redeveloped as Bloomfield Aerodrome.*

*A second pitch, located on land between the eastern and western part of the site was developed in 1928.*

*This Cricket Ground became a focal point for patients, staff and visitors over the years.*

*An important addition to the hospital was the construction of two TB Wards in 1934. These Wards were built in response to a decade or more of measures put in place to control the epidemic spread of TB.*

Thomas Ellis had over 37 years' service to the Department of Health, only interrupted by his war service in the army medical corp.



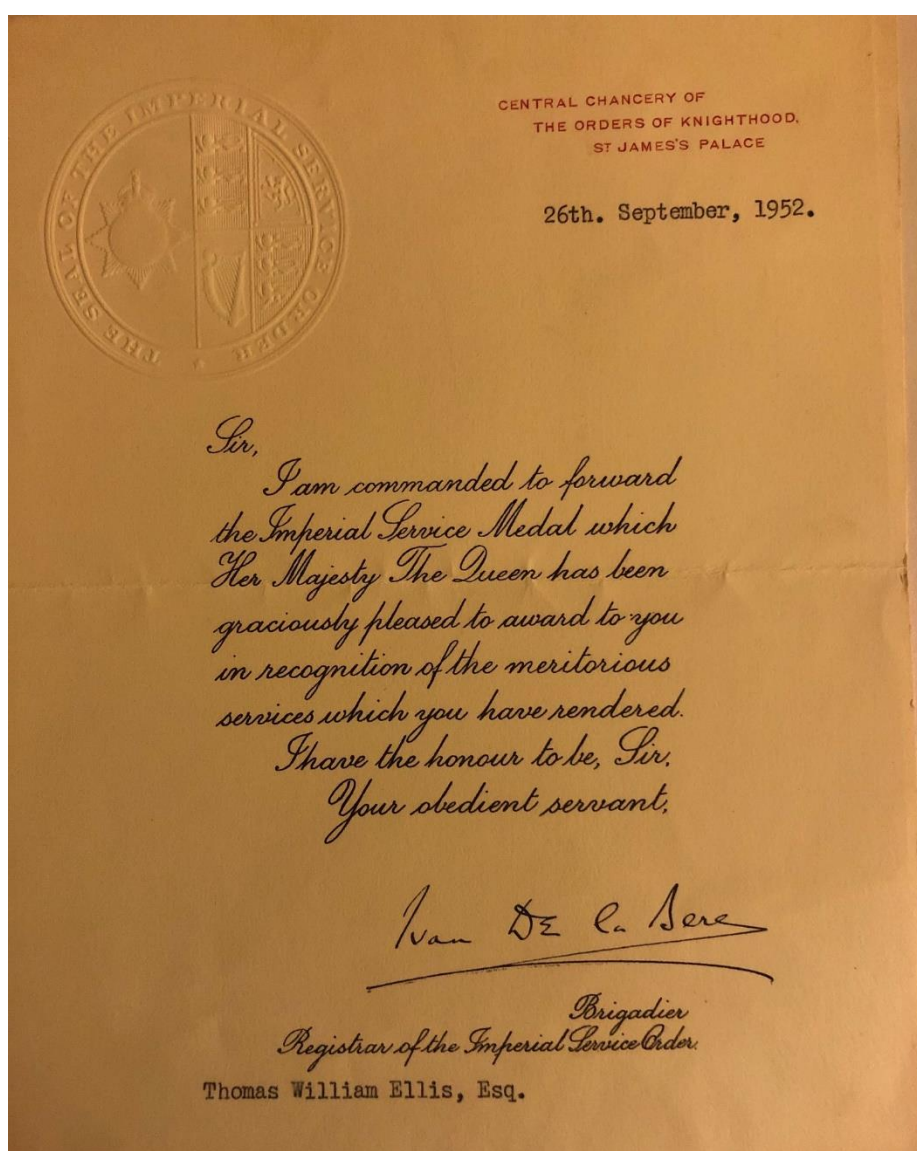
Thomas William Ellis 6 January 1951



## Civil Awards

On 26 September 1952 Queen Elizabeth II approved the award of The Imperial Service Medal to Thomas Ellis for his service to health

*The award was instituted in 1902 by King Edward VII to recognise distinguished public service by senior officers and at junior levels of the British and of the civil services of Commonwealth countries for a period of in-excess of 25 Years.*



The award presentation was at Government House in Sydney NSW on 3 March 1953.



CENTRAL CHANCERY OF  
THE ORDERS OF KNIGHTHOOD,  
ST JAMES'S PALACE

26th. September, 1952.

Sir,  
I am commanded to forward  
the Imperial Service Medal which  
Her Majesty The Queen has been  
graciously pleased to award to you  
in recognition of the meritorious  
services which you have rendered.  
I have the honour to be, Sir,  
Your obedient servant,

*Thomas W. Ellis*  
Brigadier  
Registrar of the Imperial Service Order  
Thomas William Ellis, Esq.

## The Family

Thomas and his wife lived in Sydney after they were married.

They moved to Orange in 1925, where they lived in 11 Peisley Street Orange until September 1948 when the family moved to the Chief Attendants residence at Bloomfield Hospital (as it was essential that he reside on site due to the challenges the hospital was facing during WW2).

Thomas and Florence had three children:

- Jean (born December 1919 in Sydney - died Sydney January 1920)
- Frederick – Born Orange September 1926
- Joyce Onley (nee Ellis) – Born Orange April 1928

## The Later Years

Thomas retired in October 1950, returning to his residence at 11 Peisley Street, Orange; later moving to 5 Sackville Street, Hurstville, in Sydney (pictured below)



5 Sackville Street, Hurstville, Sydney NSW, Australia

After an illness lasting a number of weeks, Thomas died in the Concord Repatriation Hospital, Sydney, NSW in 1962 (Registered at Burwood), some 12 years after his retirement from lung related issues.

Thomas was cremated at the Woronora Crematorium on 20 August 1962

### **Sporting Interests**

When Thomas was in Orange, he became a judge for the local grey hound coursing club race meetings (which were organised by the RSL - Returned Soldiers League).

The local newspapers regularly had articles about his decisions being disputed by grey hound owners.

### **Returned Soldiers League**

Thomas was an active member of the Orange RSL Sub-branch, marching each ANZAC Day

# Annexure 1

## Overseas Army Service Record

7th Aust Hqs Bde 5065

Casualty Form - Active Service  
Army Form B. 103.

Regimental No. **8063** Regiment or Corps **No. 1st Cavalry Div** Name **Ellis T. W.**

Enlisted (a) \_\_\_\_\_ Terms of Service (a) \_\_\_\_\_ Service reckons from (a) \_\_\_\_\_

Date of promotion to present rank \_\_\_\_\_ Date of appointment to lower rank \_\_\_\_\_ Numerical position on roll of N.C.O.s \_\_\_\_\_

Extended \_\_\_\_\_ Re-engaged \_\_\_\_\_ Qualification (b) \_\_\_\_\_

Report	Date	Place where reported	Report	Place	Date	Remarks
1	20-2-28	1st Hqs Bde	Proceeded to join BPP	ALEXA	20-2-28	AP. 6875
2		1st Hqs Bde	Disembarked	MARSEILLE	4-4-28	LR. 5175
3	2-12-28	1st Hqs Bde	Proceeded to Boulogne	do.	12-28	AP. 6875
4	1-1-29	1st Hqs Bde	Leave to U.K.	Winnona	21-1-29	AP. 6875
5	1-1-29	1st Hqs Bde	Returned from leave	do.	1-1-29	AP. 6875
6	2-1-29	1st Hqs Bde	Proceeded to join 7th Hqs Bde	do.	2-1-29	AP. 6875
7	1-4-29	1st Hqs Bde	Leave to U.K.	do.	1-4-29	AP. 6875
8	1-4-29	1st Hqs Bde	Returned to 7th Hqs Bde	do.	1-4-29	AP. 6875
9	18-1-29	1st Hqs Bde	Leave to U.K.	do.	18-1-29	AP. 6875
10	2-1-29	1st Hqs Bde	Returned from leave	do.	2-1-29	AP. 6875

(a) In the case of a man who has re-engaged for, or returned into Section D, Army Service, particulars of such re-engagement or return shall be entered in P. 2, 3, 4, 5, 6, 7, 8, 9, 10, 11, 12, 13, 14, 15, 16, 17, 18, 19, 20, 21, 22, 23, 24, 25, 26, 27, 28, 29, 30, 31, 32, 33, 34, 35, 36, 37, 38, 39, 40, 41, 42, 43, 44, 45, 46, 47, 48, 49, 50, 51, 52, 53, 54, 55, 56, 57, 58, 59, 60, 61, 62, 63, 64, 65, 66, 67, 68, 69, 70, 71, 72, 73, 74, 75, 76, 77, 78, 79, 80, 81, 82, 83, 84, 85, 86, 87, 88, 89, 90, 91, 92, 93, 94, 95, 96, 97, 98, 99, 100.

P.T.O.

National Archives of Australia NAA: B2455, ELLIS T W

Report	Date	Place where reported	Report	Place	Date	Remarks
1	26-2-28	1st Hqs Bde	Proceeded to leave for	Italy	26-2-28	AP. 6875
2	2-2-28	1st Hqs Bde	Returned from leave	do.	2-2-28	AP. 6875
3	26-10-28	1st Hqs Bde	On leave to U.K.	do.	26-10-28	AP. 6875
4	26-10-28	1st Hqs Bde	Returned from leave	do.	26-10-28	AP. 6875
5	22-2-29	1st Hqs Bde	M/O for H.I. AUSTRALIA	do.	22-2-29	AP. 6875
6	26-2-29	1st Hqs Bde	M/O ex Unit	Haarlem	26-2-29	AP. 6875
7	26-2-29	1st Hqs Bde	M/O to England	do.	26-2-29	AP. 6875
8	27-2-29	1st Hqs Bde	M/O to England	England	27-2-29	AP. 6875
9	21-2-29	1st Hqs Bde	M/O to England	England	21-2-29	AP. 6875
10	21-3-29	1st Hqs Bde	M/O to England	England	21-3-29	AP. 6875
11		1st Hqs Bde	RETURNED TO AUSTRALIA	do.		AP. 6875

P.T.O.

National Archives of Australia NAA: B2455, ELLIS T W

A.I.F. 6. Army Form 8103 Part I Service and Casualty Form. PART I. 38a-41-1234.		7th. FIELD AMB.		Regt. No. 8063	
PRESENT UNIT		Pte. <i>2-70</i>		SURNAME	
Decorations		Christian Names		ELLIS Thomas William	
<u>Particulars.</u>					
Date of Enlistment		17/7/15.		Place of Enlistment	
Age on Enlistment		28 Years Months		Liverpool, N.S.W. Years Months	
Birthplace		Hawkehead, Eng.		Religion	
Trade or Calling		Hospital Attendant		C. of B.	
Date of Embarkation from Australia		14/10/15.		If Married	
				No.	
				If an Apprentice	
				No.	
				Whereabouts of Next of Kin	
				In Australia or Abroad	
				Asst. <i>Abroad</i> ✓	
				Special Notification Card No.	

Nothing to be written in this Margin.

AUSTRALIAN IMPERIAL FORCE,  
Base Records Office,  
CANBERRA, A.C.T.

13/10/1953

The Deputy Commissioner,  
Registration Commission,

REFERENCE:

Herewith documents indicated relative to the service of the undermentioned  
ex-member of the AIF—

Reg. No. Name & Unit. Documents attached.

8063 - Ellis T W  
7th Amb. FOR EARLY RETURN—  
AF B103 ✓

TO BE RETAINED—

BR Card ✓

Attestation Paper ✓

AE B103

B178

.. B179

.. B181

.. D1

.. D1a

.. D2

.. I 1257

A & D Cards

  
Special AIF Base Records.